

**FAMU**

FLORIDA A&M UNIVERSITY  
UNIVERSITY HOUSING

# FALL '26 MOVE-IN GUIDE

We would like to welcome you to Florida Agricultural & Mechanical University. Soon you will be moving into your home away from home. We are very excited to have you staying with us this year, and hope that you will find the answer to many of your questions regarding Move-In.



## WHEN YOU ARRIVE

All residents will move in during their assigned time block between August 17-22, 2026. Time blocks will be between 8:00AM until 6:00PM by appointment only. More information forthcoming.

**Reserved Fall '26 residents may now schedule their Fall '26 move-in appointment time via the Housing Portal. [CLICK TO VIEW GUIDE](#)**

If you notice damage or issues in your room after moving in, you must submit a Maintenance request within 24 hours to address the issue. If you do not submit a Maintenance request, you could potentially be charged for preexisting damages after checkout. To submit a maintenance request, you must email: [housingmaintenance@famuedu](mailto:housingmaintenance@famuedu).

**FOR MORE INFORMATION, PLEASE EMAIL [FAMUHOUSING@FAMU.EDU](mailto:FAMUHOUSING@FAMU.EDU) OR CALL 850-599-3651**

## MISSION

The mission of FAMU Housing is to promote a safe, clean, service-oriented, efficiently managed, nurturing living learning environment that is conducive to students' academic pursuits and personal growth while fostering a sense of community, civic responsibility, and an appreciation of others.

## The **RATTLER** Living Experience encourages students to develop...

Collegiality, Excellence, Caring, Diversity, Respect, and Integrity

# WE ARE HOUSING

**FAMU**

FLORIDA A&M UNIVERSITY  
UNIVERSITY HOUSING



1735 ALTHEA GIBSON WAY, SUITE 305 | [FAMU.EDU/HOUSING](http://FAMU.EDU/HOUSING) | PHONE: 850-599-3651 | @FAMUHOUSING1887

# SAFETY

## EMERGENCY PLANNING

FAMU has officers working throughout the campus to ensure student safety. In case of an unforeseen emergency, an emergency preparedness kit is recommended for students moving into a residence hall or apartment. Contact: (850) 599-3256 ~ famupol@fam.u.edu ~ famu.edu/publicsafety



## FAMU ALERT

Communications system that provides timely and accurate information about emergency situations .

## PREPARE FOR WEATHER

### BE INFORMED

Review FAMU emergency procedures at [emergency.famu.edu](http://emergency.famu.edu). Updates will be communicated through the radio and the emergency notification system.

### FILL TANK

In case there is an emergency evacuation, any resident who owns a vehicle should have the gas tank filled.

### BUILD A HURRICANE KIT

Recommended supplies are: water, canned food, battery-powered radio, flashlight, portable charger, first aid kit and cash.

### CLEAR REFRIGERATORS & FREEZERS

The items in your refrigerator and freezer may spoil if power is lost.



# Campus Safety Notice: Prohibited Devices for All Incoming Students

Welcome to Florida A&M University! As you prepare for move-in, it's important to be aware of our policies regarding certain personal transportation devices. To ensure the safety and well-being of our campus community, the following devices are prohibited on all FAMU campuses:

- Electric scooters
- E-bikes
- gas-powered vehicles
- Hoverboards
- Self-balancing scooters
- Segways
- Any similar devices powered by lithium-ion batteries

This policy encompasses the use, storage, and charging of these devices across all campus areas, including roadways, walkways, parking lots, green spaces, university buildings, residence halls, and facilities.

## Why This Policy Is in Place

The primary concern leading to this prohibition is safety. Devices powered by lithium-ion batteries have been associated with fire hazards. For instance, in New York City, fires caused by such batteries increased from 28 incidents in 2019 to 216 in 2022, resulting in injuries and fatalities. These incidents highlight the potential risks associated with charging and storing these devices indoors.

FAMU's Housing Student Handbook explicitly states that due to fire risks, motorized vehicles—including hoverboards, self-balancing scooters, and similar devices—may not be operated, charged, or stored inside any residence hall.

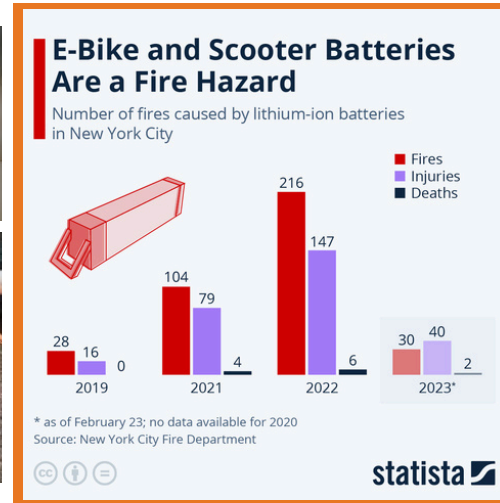
## What This Means for Students and Parents

- Do Not Bring Prohibited Devices: Please refrain from bringing electric scooters, e-bikes, hoverboards, or similar devices to campus.
- No Exceptions: These devices are not allowed in any campus areas, including dormitories and academic buildings.
- Alternative Transportation: Consider traditional bicycles or walking as safe and approved means of transportation on campus.

We appreciate your cooperation in adhering to these guidelines, which are in place to ensure a safe and secure environment for all members of the FAMU community.

For more information, please refer to the FAMU Housing Student Handbook or contact the Office of Student Affairs.

Thank you for your attention to this important matter, and welcome to the Rattler family!



# WHAT TO BRING

## Getting Around Campus

- Rattler Card - You will use it for check-in, dining & getting into your residence hall.
- Key ring/card holder
- Moving supplies such as carts, dollies, boxes, etc. plastic or tarp (in case of rain)
- Cleaning supplies (Sanitizer, disinfectant) Masks/PPE

## Laundry & Cleaning

- High-efficiency laundry detergent
- Clothes hamper
- Iron/ironing board
- Hangers
- Trash liners
- Small vacuum
- Air freshener
- Toiletries including toilet paper
- Shower caddy and shower shoes for residents using community bathrooms

## Personal Decor

- Lamp/desk organizers
- Computer/laptop
- Closet organizers
- Food/eating utensils
- Surge protector
- Bicycle lock

*No nails, screws, or staples, only use blue painters tape or Command Strips*

## Linen

- Pillow Blanket, quilt, or comforter
- Pillow top or egg carton cushion
- Mattress pad
- Towels & Washcloths
- Twin XL Sheets (Double XL Sheets for Rattler Pointe)



# WHAT NOT TO BRING

- Tobacco - FAMU is a tobacco-free campus, this includes use of electronic cigarettes and vape pens
- Extension cords – Fire Marshal prohibits use of extension cords
- Multi-plug adapters without approved surge protectors
- String lights such as Christmas lights unless battery operated
- Matches/Cigarettes
- Projectiles
- Pets
- Open coil heating or cooking devices (toaster ovens, space heaters, air fryers)
- Candles or incense
- Fireworks
- Weapons or anything that can be construed as a weapon
- Illegal drugs/paraphernalia
- Hoverboard
- Scooters are prohibited

## WHAT'S THE WI-FI?

For information on connecting to FAMU Wireless, iRattler, FAMUmail, or connecting smart devices/gaming systems, please go to [IT Service Helpdesk \(famu.edu\)](#).

You may also seek help with connectivity issues by clicking on [Help Desk Request \(famu.edu\)](#), calling 850-412-HELP(4357), or emailing [helpdesk@famu.edu](mailto:helpdesk@famu.edu).

Keep in mind, the Available wireless networks on campus are used for the following:

- FAMUSecure (students, staff, faculty) – connect your laptop, desktop, tablet, mobile phone
- FAMUGuest – (residents - must register device(s)) – connect your gaming systems, smartTVs, portable streaming devices, etc., (visit IT webpage – “connecting a gaming or smart device” for more information)

Please be advised that personal routers, switches, range extenders, hot spots, wireless cameras/doorbells, etc., are not allowed in University Housing facilities. Additionally, wireless printers cannot be registered as a wireless device on campus.

Finally, the wireless equipment is to be treated with great care. Any damage to the ethernet and cable ports may incur up to a \$500 fine.

# TECHNOLOGY

## HOUSING IT GUIDE.

## UPDATED RULES FOR COMPUTER LABS & STUDY LOUNGES

- No food, drinks, or trash are allowed near the computers or inside the lab.
- Do not move the computers.
- Do not unplug or remove any connected cables from the computers.
- If there is an issue with a computer or device, immediately contact the Front Desk RA or email your RD. DO NOT TROUBLESHOOT THE ISSUE YOURSELF.
- NO INSTALLATION OF SOFTWARE IS ALLOWED. If you have suggestions for software you would like added (within reason and university guidelines), contact your RAs and/or email your RD.
- Be mindful of downloads and sensitive data, as these computers are wiped on a scheduled basis.
- SIGN OUT OF ALL ACCOUNTS WHEN FINISHED.
- LockDown Browser is available only on the Macs and in specific locations. Current locations are listed below, with more locations pending. The software is also available for use in the Coleman Library.

### LOCKDOWN BROWSER LOCATIONS IN RESIDENCE HALLS

- Village East Computer Lab
- Village West Computer Lab
- Venom Landing North – 1st Floor Study Lounge
- Venom Landing South – 1st Floor Study Lounge

### RULES FOR PRINTING

- Printing is FREE, but you must supply your own paper.
- Ink is provided by Housing. If the printer is out of ink, contact the Front Desk RA and/or email your RD.
- You may print from one of the provided computers in the lab/lounge.
- You may print files from a USB flash drive by connecting it directly to the printer. The USB port is typically located on the front of the printer near the touchscreen.
- Scanning documents is available using either the document feeder or the flatbed scanner. You may scan and print a copy or save a digital copy to a USB flash drive.
- If there is an issue with the printer, contact IT. DO NOT TROUBLESHOOT THE ISSUE YOURSELF. Contact the Front Desk RA and/or email your RD.

## UNIVERSITY NETWORKS

### UNIVERSITY WIRELESS NETWORKS

- FAMUSecure – Main School Wi-Fi, accessed with iRattler Credentials
- FAMUGuest – meant for Guests and smart devices add through the MyDevicesPortal
- EduRoam – HotSpot can be accessed with iRattler Credentials

### UNIVERSITY WIRED NETWORK

- 1 Network Jack per pillow in Rooms \*Port available through Access Point, depending on Hall\*

### ACCESS POINTS

- Do not block the APs, with clothes, boxes, furniture. As it can disrupt the signal

### UNSUPPORTED DEVICES

- Google Home Speakers

SCAN HERE TO  
SUBMIT TICKET



# WE'VE PARTNERED TO EASE THE STRESS OF MOVE-IN DAY



New Life Campus™ for

## New Life Rattlers

### Move through college, Stress Free

We deliver your belongings directly to your dorm, store them between semesters, and bring everything back when you return, whether you live on or off campus. You move in once. We handle the rest.

### One Solution for the Entire School Year

1

We ship you containers & you pack on your time



2

We deliver directly to your on-campus room before you arrive



3

Spring semester, we pick up, store, and move you back in Fall Semester



Secure Your Spot Today!



@NewLifeCampus

[www.newlifecampus.com/famu](http://www.newlifecampus.com/famu)

[WWW.NEWLIFECAMPUS.COM/FAMU](http://WWW.NEWLIFECAMPUS.COM/FAMU)

# HOUSING STYLES

## TRADITIONAL/SUITE-STYLE

- POLKINGHORNE VILLAGE
- SAMPSON HALL
- YOUNG HALL
- FAMU TOWERS
- VENOM LANDING

## AMENITIES

- CLIMATE CONTROLLED HEAT & AIR
- EXTERIOR & INTERIOR SURVEILLANCE IN COMMON AREAS
- EXTERIOR ELECTRONIC CARD ACCESS

## APARTMENT-STYLE

- PALMETTO SOUTH
- PALMETTO PHASE III
- RATTLER POINTE

## AMENITIES

- CENTRAL AIR & HEAT
- FULL KITCHEN & DINING ROOM
- EXTERIOR SURVEILLANCE

**ALL HALLS INCLUDE  
WI-FI | COMPUTER LABS**



## LIVING LEARNING COMMUNITIES (LLC)

The communities located in Towers North:

- Allied Health Sciences
- Nursing
- Pharmacy and Pharmaceutical Sciences
- Social Sciences, Arts and Humanities
- Journalism and Graphic Communication
- Education
- Environment
- Agriculture and Food Sciences
- Architecture and Engineering Technology

The communities located in Village West:

- Honors
- Business and Industry
- Science and Technology
- Engineering

The communities located in Village East:

- Honors RISE
- RATTLEERS RISE (Second year experience)

**The deadline to apply for the LLCs has closed.**



**RATTLE POINTE**



**SAMPSON & YOUNG HALL**



**PALMETTO SOUTH**

## ESSENTIAL RESOURCES

### RENTAL INSURANCE RECOMMENDED

Renters insurance provides valuable protection if a student's personal belongings are stolen or damaged by a covered event, including laptop computers, smart phones, bicycles, game consoles, textbooks, clothing, and other items. In most instances, the university assumes no responsibility if your valuables are lost, stolen or damaged.

Renters insurance also protects students financially for unintentional damage to the student's residence, or bodily injury to others for which the student is legally liable within the residence premises.

### ADDITIONAL RESOURCES

#### Living On Campus

[Connecting Your Smart Devices:](https://www.youtube.com/watch?v=iMsNhUxSuU8/)

<https://www.youtube.com/watch?v=iMsNhUxSuU8/>

[Mailing a Package:](https://www.youtube.com/watch?v=3pd8G9WL6Pw)

<https://www.youtube.com/watch?v=3pd8G9WL6Pw>

#### Moving & Storage

[New Life Campus](http://www.newlifecampus.com/famu)

[www.newlifecampus.com/famu](http://www.newlifecampus.com/famu)

### ESSENTIAL LINKS

- [Fall '26 Application Guide](#)
- [Official Move-In Website](#)



# PARENT PORTAL

Greetings Rattler Family, Congratulations on your student's acceptance into Florida Agricultural and Mechanical University, passionately known as FAMU!

The Office of University Housing has created a centralized online platform where parents of students can access information and resources related to University Housing. The information contained here will be updated on an ongoing basis as we strive to keep you abreast of the happenings in University Housing. The parent portal serves to provide access to important documents and forms, such as the student housing agreement, move-in instructions, and housing policies, in a digital format for easy reference.

It is imperative that your student stay up to date by following our Social Media pages at famuhousing1887 and paying attention to any announcements delivered through FAMUINFO. The same information they receive there will also be uploaded here. We do ask that you allow your scholar to become the responsible young adult you have raised them to be and take care of their own affairs. However, we understand that some information may slip by as they work towards GRADUATION and would like to make you aware.

First, if your student is Newly Admitted, please sit down and review their Admissions Packet in full to avoid any obstacles when it is time to apply for Housing.

If you have a Returning Student, please advise them to pay attention to FAMUINFO as this is often the method of first release for new information.

Lastly, feel free to explore the entire University Housing webpage at your convenience and contact us with any questions or concerns at (850) 599-3651 or [famuhousing@famu.edu](mailto:famuhousing@famu.edu).

**SCAN HERE**



# DIRECTIONS

THE PRIMARY VEHICLE ROUTE SHALL BE WAHNISH WAY, GAINES STREET, OSCEOLA STREET, EUGENIA STREET AND PERRY STREET (BOTH DIRECTIONS). EMERGENCY VEHICLES SHALL BE GIVEN PRIORITY FOR TRAVEL IF AN EMERGENCY INCIDENT OCCURRED.

## FAMU TOWERS

451 Rudy Hubbard Way, Tallahassee, FL 32310

## YOUNG/SAMPSON HALL

1591 Gibbs Hall Trail, Tallahassee, FL 32310

## POLKINGHORNE VILLAGE

667 Robert & Trudy Perkins Way , Tallahassee, FL 32310

## PALMETTO SOUTH APARTMENTS

255 Palmetto Street, Tallahassee, FL 32310

## PALMETTO PHASE III APARTMENTS

277 Palmetto Street, Tallahassee, FL 32310

## RATTLER POINTE BUILDING A

1220/1230 Conklin St Tallahassee, FL 32310

## RATTLER POINTE BUILDING B

1119, 1123, 1130, 1135 Conklin St Tallahassee, FL 32310

## RATTLER POINTE BUILDING C

636 Eugenia St Tallahassee, FL 32310

## RATTLER POINTE BUILDING D

600 Eugenia St Tallahassee, FL 32310

## VENOM LANDING

475 & 479 Rudy Hubbard Way, Tallahassee, FL 32310

# PARKING & LOADING

THE PRIMARY VEHICLE ROUTE SHALL BE ALTHEA GIBSON WAY, GAINES STREET, OSCEOLA STREET, EUGENIA STREET AND PERRY STREET (BOTH DIRECTIONS). EMERGENCY VEHICLES SHALL BE GIVEN PRIORITY FOR TRAVEL IF AN EMERGENCY INCIDENT OCCURRED.

## **POLKINGHORNE VILLAGE**

**667 Robert & Trudy Perkins Way, Tallahassee, FL 32310**

Students/Parents can enter from Perry Street for staging. An attendant/Officer will direct you to the unloading zone (Polkinghorne Village rear parking lot). Please note that this area is for unloading only. Items should be unloaded, and then the vehicle should be moved to Ardelia Court or Parking Garage for parking. Someone must always stay with the vehicle during the unloading process. The parking spaces in front of Polkinghorne Village are for ADA unloading only. There is no parking in front of Polkinghorne Village on Robert and Trudie Perkins Way.



## **FAMU TOWERS**

**451 Rudy Hubbard Way, Tallahassee, FL 32301**

The staging area will be the MLK Blvd Parking Lot (located at the intersection of MLK and Lincoln Street). Students/Parents can enter the Parking Lot from MLK Blvd for staging. An attendant/Officer will direct you to the unloading zone (Towers westside parking lot). Please note that this area is for unloading only. Someone must always stay with the vehicle during the unloading process. Items should be unloaded, and then the vehicle should be moved to the Gravel lot, located at the intersection of MLK Blvd and Osceola Street for parking.

## **YOUNG/SAMPSON HALL**

**1591 ALTHEA GIBSON Way, Tallahassee, FL 32310**

Students/Parents can enter the Bragg Memorial Stadium parking lot from Perry St for staging. All staging will travel North on Wahnish Way. An attendant/Officer will direct you to the unloading zone. Please note that this area is for unloading only. Items should be unloaded, and then the vehicle should be moved to the Parking Garage for parking. Someone must always stay with the vehicle during the unloading process.



# PARKING & LOADING

THE PRIMARY VEHICLE ROUTE SHALL BE WAHNISH WAY, GAINES STREET, OSCEOLA STREET, EUGENIA STREET AND PERRY STREET (BOTH DIRECTIONS). EMERGENCY VEHICLES SHALL BE GIVEN PRIORITY FOR TRAVEL IF AN EMERGENCY INCIDENT OCCURRED.

## **RATTLER POINTE**

**1220/1230 Conklin St Tallahassee, FL 32310**

*Students/Parents can enter the Rattler Pointe Complex off of Eugenia Street from either Perry Street or Wahnish Way for staging. An attendant/Officer will direct you to the unloading zone (designated building). Please note that this area is for unloading only. Items should be unloaded, and then the vehicle should be moved to Ardelia Court for parking. Someone must always stay with the vehicle during the unloading process. After unloading, the vehicle must exit from the complex north on Conklin Street to FAMU Way, then right (east) on FAMU Way to Wahnish Way, then right (south) on Wahnish Way to the traffic lights. Make right (west) onto Robert and Trudie Perkins Way to Ardelia Court (which will be to your right). There is no parking in front of the apartment overnight during the move in timeframe. All vehicles must park on Ardelia Court in the grassy area.*

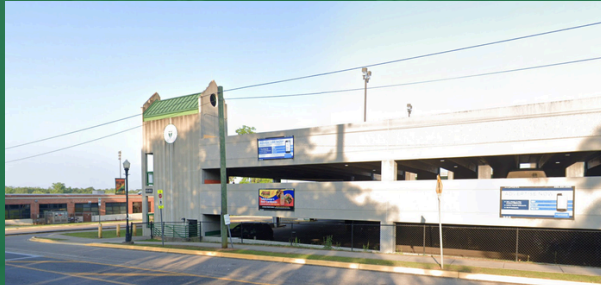


# PARKING & LOADING

THE PRIMARY VEHICLE ROUTE SHALL BE WAHNISH WAY, GAINES STREET, OSCEOLA STREET, EUGENIA STREET AND PERRY STREET (BOTH DIRECTIONS).  
EMERGENCY VEHICLES SHALL BE GIVEN PRIORITY FOR TRAVEL IF AN EMERGENCY INCIDENT OCCURRED.

## SHUTTLE SERVICE

*Two shuttles will be circling around the campus  
with designated bus stops from 9:00am-5:00pm.*



**PARKING GARAGE**

### PREFERED TRAVEL ROUTE

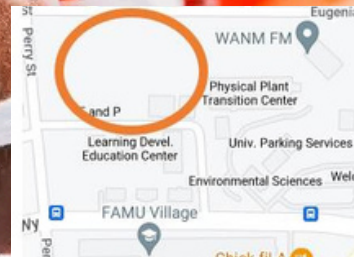
- Traveling South to Parking Garage
  - Go South on Wahnish Way
  - Turn right into Parking Garage
- Traveling North to Parking Garage
  - Go North on Wahnish Way
  - Turn left onto Okaloosa Street
  - Turn right onto Perry Street
  - Turn right onto Robert and Trudie Perkins Way
  - Turn right onto Wahnish Way
  - Turn right into Parking Garage



# GAME DAY PARKING

Please be advised that, “All parking lots on campus are reserved for Athletics for Game Day parking at 5:30PM each Friday of a game week” -FAMU Athletics

1. All vehicles must be moved from the Welcome Center Parking Lot and the Wahnish Parking Garage by 5:30 p.m., the Friday before each home game.
2. Starting at noon on Thursday's before homes games, vehicles in the Polkinghorne Village lot, must be relocated. Please see image below for clarity.
3. Parking is available on the grass lot of Ardelia Court at the corner of Perry Street and Eugenia Street. This is directly across from Polkinghorne Village, behind the brick buildings at 667 Ardelia Court, Tallahassee, FL 32310, and the RV Parking.



SCAN TO KNOW MORE ABOUT GAME DAY PARKING

# PREARRIVAL HALL MEETINGS

**AUGUST 13,  
2026**

7PM | ZOOM

## VILLAGE EAST

<https://fam.u.zoom.us/j/837327157862>  
GcScQq6QHW3BetXXuw

## VILLAGE WEST

<https://fam.u.zoom.us/j/837327157862>  
N\_lmiUQipVSs2IlyIJJSBiNQ

## SAMPSON/ YOUNG

<https://fam.u.zoom.us/j/837327157862>  
MSWQ6WvEv\_DTYnnWw

## TOWERS NORTH

<https://fam.u.zoom.us/j/837327157862>  
wloBqIQaeSheeaScmlQA

## VENOM LANDING SOUTH

<https://us05web.zoom.us/j/837327157862>  
pwd=SK3nyuTy1Wrr3mZPTjV4Y6hVthS0CX.1

## TOWERS SOUTH

<https://fam.u.zoom.us/j/837327157862>  
1aJhPGdPAZI-Q

## PALMETTO SOUTH

<https://fam.u.zoom.us/j/837327157862>  
eYUXT8qXpkVQC6FXMg

## PALMETTO PHASE III

<https://fam.u.zoom.us/j/837327157862>  
v\_FSTzym6m2GURYezw

## RATTLE POINTE (TO HAPPEN AT 8 PM)

<https://fam.u.zoom.us/j/837327157862>  
/94276630635

## VENOM LANDING NORTH

<https://fam.u.zoom.us/j/837327157862>  
IIm95T9C1\_wxqN4MXiA



# MEET YOUR AREA COORDINATOR/RESIDENT DIRECTOR

## MS. NIGERIA GWINN

Venom Landing North  
Front Desk: 850-599-8102  
Email: nigeria.gwinn@fam.u.edu

## MS. MAYA LEWIS

Polkinghorne Village East  
Front Desk: 850-412-5349  
Email: maya.lewis@fam.u.edu

## MS. SARAH DOMINGUEZ

Towers South  
Front Desk: 850-412-7666  
Email: sarah.dominguez@fam.u.edu

## MS. NATALIE ALEXIS

Sampson/Young  
Front Desk: 850-412-6561  
Email: natalie2.alexis@fam.u.edu

## MR. RAYJAE GRANT

Phase III  
Front Desk: 850-412-6649  
Email: Rayjae.grant@fam.u.edu

## MR. DARIUS JONES

Venom Landing South  
Front Desk: 850-599-8106  
Email: darius6.jones@fam.u.edu

## MR. JUSTEN SMITH

Polkinghorne Village West  
Front Desk: 850-412-5370  
Email: justen1.smith@fam.u.edu

## MS. JORDAN WHITE

Tower North  
Front Desk: 850-412-5079  
Email: jordan4.white@fam.u.edu

## MS. NATALIE ALEXIS

Rattler Pointe  
Front Desk: 850.412.0000  
Email: natalie2.alexis@fam.u.edu

## JUSTEN SMITH

Palmetto South  
Front Desk: 850-599-8244  
Email: justen1.smith@fam.u.edu

STUDIES SHOW THAT STUDENTS WHO LIVE ON CAMPUS TEND TO: **COMPLETE** MORE CREDIT HOURS & HAVE **HIGHER** GPA

- THE RESIDENCE HALL ASSOCIATION IS A STUDENT-LED CAMPUS ORGANIZATION WITHIN THE OFFICE OF UNIVERSITY HOUSING. RHA AIMS TO BETTER THE RESIDENTIAL EXPERIENCE FOR STUDENTS LIVING ON-CAMPUS THROUGH ADVOCACY AND STUDENT LEADERSHIP.
- RHA HOSTS LARGE CAMPUS-WIDE EVENTS AND PLANNED TRIPS FOR ALL STUDENTS WHO LIVE ON-CAMPUS.
- RHA OFFERS LEADERSHIP OPPORTUNITIES.
- OUR STUDENT LEAD EXECUTIVE BOARD RUNS THE ORGANIZATION.



WE ARE  
**HOUSING**  
FOR  
**FAMU** FLORIDA A&M UNIVERSITY  
UNIVERSITY HOUSING

**RESIDENT HALL ASSOCIATION**  
FOLLOW @FAMUHOUSING1887

RHA HOSTS LARGE CAMPUS-WIDE EVENTS FOR ALL STUDENTS WHO LIVE ON-CAMPUS

# HOUSING SOCIAL MEDIA

FOLLOW OUR INSTAGRAM PAGE TO STAY IN THE KNOW WITH EVERYTHING HOUSING.



**WE ARE HOUSING**

SCAN TO CONNECT ON SOCIAL @FAMUHOUSING1887

# WE ARE HOUSING

1735 ALTHEA GIBSON WAY, SUITE 305  
FAMUHOUSING@FAMU.EDU  
PHONE: 850-599-3651 | FAX: 850-561-2620  
FAMU.EDU/HOUSING



**SCAN TO CONNECT ON SOCIAL @FAMUHOUSING1887**