



ENROLLMENT

Enrollment Overview

Figure 3: Historical Enrollment

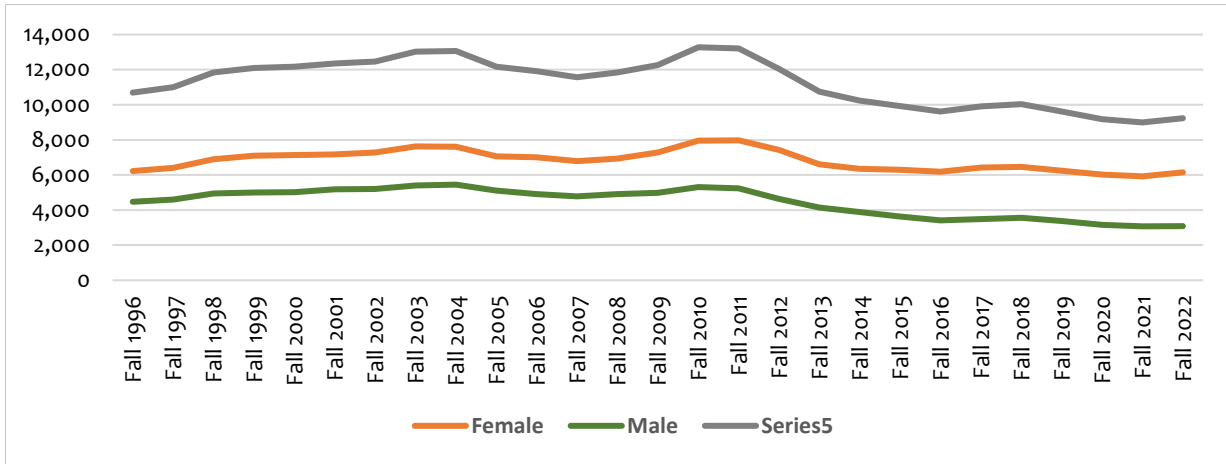


Table 9: Historical Enrollment

Year	Female		Male		Total *
	Total	%	Total	%	
Fall 1996	6,228	58.2%	4,469	41.8%	10,697
Fall 1997	6,408	58.3%	4,590	41.7%	10,998
Fall 1998	6,895	58.2%	4,942	41.8%	11,837
Fall 1999	7,097	58.7%	5,003	41.3%	12,100
Fall 2000	7,135	58.7%	5,026	41.3%	12,161
Fall 2001	7,166	58.0%	5,183	42.0%	12,349
Fall 2002	7,273	58.3%	5,195	41.7%	12,468
Fall 2003	7,620	58.5%	5,403	41.5%	13,023
Fall 2004	7,618	58.3%	5,449	41.7%	13,070
Fall 2005	7,070	58.1%	5,104	41.9%	12,177
Fall 2006	7,001	58.8%	4,909	41.2%	11,913
Fall 2007	6,783	58.6%	4,784	41.4%	11,567
Fall 2008	6,940	58.6%	4,908	41.4%	11,848
Fall 2009	7,279	59.4%	4,982	40.6%	12,261
Fall 2010	7,964	60.0%	5,313	40.0%	13,277
Fall 2011	7,973	60.4%	5,234	39.6%	13,207
Fall 2012	7,419	61.6%	4,632	38.4%	12,051
Fall 2013	6,604	61.5%	4,134	38.5%	10,738
Fall 2014	6,346	62.0%	3,887	38.0%	10,233
Fall 2015	6,297	63.5%	3,623	36.5%	9,920
Fall 2016	6,195	64.4%	3,419	35.6%	9,614
Fall 2017	6,428	64.9%	3,481	35.1%	9,909
Fall 2018	6,465	64.5%	3,566	35.5%	10,031
Fall 2019	6,249	65.0%	3,368	35.0%	9,617
Fall 2020	6,018	65.6%	3,161	34.4%	9,179
Fall 2021	5,921	65.8%	3,073	34.2%	8,994
Fall 2022	6,143	66.6%	3,085	33.4%	9,228

Note: * Total also includes individuals who preferred not to answer

Table 10: Enrollment Overview

Category	Fall 2018	Fall 2019	Fall 2020	Fall 2021	Fall 2022	5-yr % Change
Gender						
Female	6,465	6,249	6,018	5,921	6,143	-5.0%
Male	3,566	3,368	3,161	3,073	3,085	-13.5%
Total	10,031	9,617	9,179	8,994	9,228	-8.0%
Attendance Status						
Full-Time	8,591	8,375	7,737	7,619	7,886	-8.2%
Part-Time	1,440	1,242	1,442	1,375	1,342	-6.8%
Total	10,031	9,617	9,179	8,994	9,228	-8.0%
Ethnicity						
African American	8,248	7,959	7,631	7,542	7,860	-4.7%
American Indian	2	2	4	8	8	300.0%
Asian	104	82	71	65	69	-33.7%
Hispanic	441	475	509	498	513	16.3%
Native Hawaiian	5	4	5	3	4	-20.0%
Non-Resident Alien	94	76	70	53	36	-61.7%
Two or more races	334	314	260	234	188	-43.7%
White	796	705	629	591	549	-31.0%
No Race Reported	7	0	0	0	1	-85.7%
Total	10,031	9,617	9,179	8,994	9,228	-8.0%
State of Residency						
Florida	8,190	7,745	7,288	6,880	7,241	-11.6%
Out-of-State	1,841	1,872	1,891	2,114	1,987	7.9%
Total	10,031	9,617	9,179	8,994	9,228	-8.0%
Age Range						
17 and Under	241	160	180	141	165	-31.5%
18 - 21	5,446	5,233	4,857	4,793	5,075	-6.8%
22 - 24	2,415	2,417	2,392	2,371	2,377	-1.6%
25 - 30	1,255	1,149	1,073	1,021	939	-25.2%
31 - 40	425	433	454	455	446	4.9%
41 - 64	244	220	221	208	222	-9.0%
65 and Over	5	5	2	5	4	-20.0%
Total	10,031	9,617	9,179	8,994	9,228	-8.0%
Student Level						
Undergraduate	7,724	7,499	7,082	7,000	7,441	-3.7%
Graduate	1,859	1,778	1,759	1,688	1,485	-20.1%
Unclassified	448	340	338	306	302	-32.6%
Total	10,031	9,617	9,179	8,994	9,228	-8.0%
Degree Level Sought						
Baccalaureate	7,276	7,141	6,821	6,764	7,216	-0.8%
Masters	669	609	681	678	576	-13.9%
Doctorate	291	313	332	316	335	15.1%
Law	530	563	474	416	361	-31.9%
Pharmacy	817	653	533	514	438	-46.4%
Non-Degree Seeking	448	338	338	306	302	-32.6%
Total	10,031	9,617	9,179	8,994	9,228	-8.0%
Classification						
Freshmen	2,215	1,822	1,350	1,313	1,710	-22.8%
Sophomore	1,498	1,676	1,555	1,433	1,463	-2.3%
Junior	1,867	1,822	2,094	2,085	2,059	10.3%
Senior	1,940	2,177	2,083	2,169	2,209	13.9%
First Professional *	1,177	933	819	765	644	-45.3%

* Professional doctoral degrees offered at FAMU for Law (JD), Pharmacy (PharmD) and Physical Therapy (DPT)

Category	Fall 2018	Fall 2019	Fall 2020	Fall 2021	Fall 2022	5-yr % Change
Graduate	886	847	940	923	841	-5.1%
Unclassified	448	340	338	306	302	-32.6%
Total	10,031	9,617	9,179	8,994	9,228	-8.0%
Strategic Emphasis						
Education	99	110	128	144	158	59.6%
GAP Analysis	279	306	328	304	284	1.8%
Global	20	19	22	19	18	-10.0%
Health	2,291	2,225	2,078	2,049	2,262	-1.3%
STEM	2,120	2,076	2,100	2,109	2,245	5.9%
Not a Program of Strategic Emphasis	5,222	4,881	4,523	4,369	4,261	-18.4%
Total	10,031	9,617	9,179	8,994	9,228	-8.0%
College/School						
College of Agriculture and Food Sciences	295	304	309	315	370	25.4%
College of Education	411	415	453	464	454	10.5%
FAMU-FSU College of Engineering	395	393	409	427	497	25.8%
College of Law	530	563	474	416	361	-31.9%
College of Pharmacy & Pharmaceutical Sciences, Institute of Public Health	960	809	722	698	611	-36.4%
College of Science and Technology	1,126	1,077	1,069	1,034	1,047	-7.0%
College of Social Sciences, Arts and Humanities	2,290	2,204	2,021	1,912	1,983	-13.4%
School of Allied Health Sciences	1,210	1,297	1,223	1,238	1,280	5.8%
School of Architecture and Engineering Technology	250	234	243	241	242	-3.2%
School of Business and Industry	1,034	968	972	1,005	1,094	5.8%
School of Journalism and Graphic Communication	506	511	509	497	510	0.8%
School of Nursing	487	407	348	343	371	-23.8%
School of the Environment	89	95	89	98	106	19.1%
Unclassified	448	340	338	306	302	-32.6%
Total	10,031	9,617	9,179	8,994	9,228	-8.0%

Enrollment by Degree Program

Table 11: Enrollment by Classification of Instructional Programs

Program	Fall 2018	Fall 2019	Fall 2020	Fall 2021	Fall 2022	5-yr % Change
College of Agriculture and Food Sciences						
Bachelor - Agriculture, General	141	161	167	183	214	51.8%
Bachelor - Agribusiness/Agricultural Business Operations	34	44	48	41	53	55.9%
Bachelor - Food Sciences and Technology	60	48	49	39	46	-23.3%
Bachelor - Agricultural Engineering	30	28	22	22	25	-16.7%
Bachelor - Engineering, Other	7	6	2	3	3	-57.1%
Masters - Agriculture, General	22	16	20	25	27	22.7%
Doctoral - Entomology	1	1	1	2	2	100.0%
College Total	295	304	309	315	370	25.4%
College of Education						
Bachelor - Elementary Education and Teaching	19	35	31	52	65	242.1%
Bachelor - Secondary Education and Teaching	9	8	10	22	29	222.2%
Bachelor - Early Childhood Education and Teaching	4	0	0	0	0	-100.0%
Bachelor - English/Language Arts Teacher Education	0	0	0	0	0	0.0%
Bachelor - Mathematics Teacher Education	6	3	6	7	6	0.0%
Bachelor - Music Teacher Education	8	8	15	9	10	25.0%
Bachelor - Social Science Teacher Education	0	0	0	0	0	0.0%
Bachelor - Health, Physical Education/Fitness	66	62	70	73	87	31.8%
Bachelor - Physical Education Teaching and Coaching	0	0	1	0	3	200.0%

Category	Fall 2018	Fall 2019	Fall 2020	Fall 2021	Fall 2022	5-yr % Change
Bachelor - Pre-Elementary Education	55	47	67	38	43	-21.8%
Bachelor - Pre-English Education	16	14	15	15	11	-31.3%
Bachelor - Pre-History Education	11	11	10	7	7	-36.4%
Bachelor - Pre-Music Teacher Education	48	60	47	40	35	-27.1%
Bachelor - Pre-Physical Education	12	10	6	6	2	-83.3%
Bachelor - Pre-Political Science Education	2	5	4	1	0	-100.0%
Bachelor - Pre-Science Education/Biology	1	1	0	0	2	100.0%
Bachelor - Science Teacher Education/General Science Teacher	0	1	0	0	0	-100.0%
Masters - Curriculum and Instruction	17	16	26	16	15	-11.8%
Masters - Educational Leadership and Administration	9	4	9	11	6	-33.3%
Masters - Student Counseling and Personnel Services	36	37	38	37	23	-36.1%
Masters - Sport Business Management	34	28	32	46	33	-2.9%
Research Doctoral - Educational Leadership and Administration	58	65	66	84	77	32.8%
College Total	411	415	453	464	454	10.5%
FAMU-FSU College of Engineering						
Bachelor – Bioengineering and Biomedical Engineering	0	9	21	18	13	44.4%
Bachelor - Chemical Engineering	26	18	15	15	13	-50.0%
Bachelor - Civil Engineering, General	19	21	27	30	39	105.3%
Bachelor - Computer Engineering, General	22	22	31	33	38	72.7%
Bachelor - Electrical and Electronics Engineering	18	25	27	26	24	33.3%
Bachelor - Engineering, Other	200	181	141	159	227	13.5%
Bachelor - Industrial Engineering	17	22	26	28	26	52.9%
Bachelor - Mechanical Engineering	34	33	55	49	49	44.1%
Bachelor - Pre-Engineering	0	1	0	0	0	-100.0%
Masters - Bioengineering and Biomedical Engineering	1	1	1	1	0	-100.0%
Masters - Chemical Engineering	0	3	0	5	2	-33.3%
Masters - Civil Engineering, General	4	5	3	9	3	-25.0%
Masters - Electrical and Electronics Engineering	3	3	2	5	1	-66.7%
Masters - Mechanical Engineering	3	1	2	8	4	33.3%
Masters - Systems Engineering	0	0	1	1	2	100.0%
Masters - Industrial Engineering	2	1	3	6	6	200.0%
Research Doctoral - Bioengineering and Biomedical Engineering	2	1	3	3	4	100.0%
Research Doctoral - Chemical Engineering	3	5	10	3	8	166.7%
Research Doctoral - Civil Engineering, General	15	15	13	6	7	-53.3%
Research Doctoral - Electrical and Electronics Engineering	10	11	9	8	12	20.0%
Research Doctoral - Mechanical Engineering	8	7	8	6	7	-12.5%
Research Doctoral - Industrial Engineering	8	8	11	8	12	50.0%
College Total	395	393	409	427	497	25.8%
College of Law						
Law	530	563	474	416	361	-31.9%
College Total	530	563	474	416	361	-31.9%
College of Pharmacy & Pharmaceutical Sciences, Institute of Public Health						
Bachelor - Pharmacy, Pharmaceutical Sciences, and Administration	9	18	24	22	19	111.1%
Bachelor - Pre-Pharmacy	1	2	3	0	0	-100.0%
Masters - Pharmacy, Pharmaceutical Sciences, and Administration	7	7	6	9	2	-71.4%
Masters - Public Health, General	55	51	67	75	60	9.1%
Research Doctoral - Pharmacy, Pharmaceutical Sciences, & Administration	36	36	41	31	45	25.0%
Research Doctoral - Public Health, General	35	42	48	47	47	34.3%
First Professional - Pharmacy	817	653	533	514	438	-46.4%
College Total	960	809	722	698	611	-36.4%

Category	Fall 2018	Fall 2019	Fall 2020	Fall 2021	Fall 2022	5-yr % Change
College of Science and Technology						
Bachelor - Computer and Information Sciences, General	142	139	141	159	185	30.3%
Bachelor - Computer and Information Sciences, Other	5	1	0	0	0	-100.0%
Bachelor - Information Technology	124	130	119	90	104	-16.1%
Bachelor - Cybersecurity	0	0	1	0	2	100.0%
Bachelor - Biology/Biological Sciences	658	638	634	611	580	-11.9%
Bachelor - Mathematics, General	23	28	27	26	27	17.4%
Bachelor - Chemistry, General	104	88	89	93	95	-8.7%
Bachelor - Physics, General	10	11	7	8	11	10.0%
Masters - Computer and Information Sciences	13	12	18	19	14	7.7%
Masters - Biology/Biological Sciences, General	20	10	11	11	12	-40.0%
Masters - Chemistry, General	9	5	6	4	4	-55.6%
Masters - Physics, General	3	2	2	3	3	0.0%
Research Doctoral - Physics, General	15	13	14	10	10	-33.3%
College Total	1,126	1,077	1,069	1,034	1,047	-7.0%
College of Social Sciences, Arts and Humanities						
Bachelor - African American/Black Studies	20	19	22	19	18	-10.0%
Bachelor - English Language and Literature, General	48	43	35	41	35	-27.1%
Bachelor - English/Language Arts Teacher Education	0	1	0	0	0	-100.0%
Bachelor - General Studies	225	127	133	76	107	-52.4%
Bachelor - History, General	22	25	19	16	12	-45.5%
Bachelor - Interdisciplinary Studies	259	217	136	127	136	-47.5%
Bachelor - Philosophy and Religious Studies, Other	11	14	13	11	18	63.6%
Bachelor - Psychology, General	377	429	491	513	570	51.2%
Bachelor - Criminal Justice/Safety Studies	452	463	408	382	371	-17.9%
Bachelor - Social Work	117	141	141	134	90	-23.1%
Bachelor - Political Science and Government, General	209	215	200	205	212	1.4%
Bachelor - Sociology	81	80	64	65	74	-8.6%
Bachelor - Drama and Dramatics/Theatre Arts	66	67	48	55	61	-7.6%
Bachelor - Fine/Studio Arts, General	18	16	18	22	18	0.0%
Bachelor - Music, General	123	122	99	91	88	-28.5%
Bachelor - Music Teacher Education	0	1	1	1	0	-100.0%
Bachelor - Pre-Political Science Education	0	1	0	0	0	-100.0%
Bachelor - Pre-Social Work	118	69	30	17	61	-48.3%
Masters - Community Psychology	37	40	35	35	29	-21.6%
Masters - Social Work	53	52	74	55	47	-11.3%
Masters - Social Sciences, General	54	62	54	47	36	-33.3%
College Total	2,290	2,204	2,021	1,912	1,983	-13.4%
School of Allied Health Sciences						
Bachelor - Health Services/Allied Health/Health Sciences	789	895	830	873	892	13.1%
Bachelor - Health/Health Care Administration/Management	106	120	110	99	108	1.9%
Bachelor - Health Information/Medical Records Administration	40	44	40	26	37	-7.5%
Bachelor - Respiratory Care Therapy/Therapist	29	28	43	36	33	13.8%
Bachelor - Pre-Cardiopulmonary Science	49	45	36	45	64	30.6%
Bachelor - Pre-Health Care	34	4	0	0	0	-100.0%
Bachelor - Pre-Health Information Mgmt	5	1	0	0	1	-80.0%
Masters - Health/Health Care Administration/Management	21	22	32	24	24	14.3%
Masters - Occupational Therapy/Therapist	63	63	59	64	59	-6.3%
Doctor of Physical Therapy - Physical Therapy/Therapist	74	75	73	71	62	-16.2%
School Total	1,210	1,297	1,223	1,238	1,280	5.8%
School of Architecture and Engineering Technology						
Bachelor - Architecture	117	134	143	143	149	27.4%
Bachelor - Electrical, Electronic and Communications Engineering	23	26	27	30	31	34.8%
Bachelor - Construction Engineering Technology	69	50	48	43	38	-44.9%

Category	Fall 2018	Fall 2019	Fall 2020	Fall 2021	Fall 2022	5-yr % Change
Masters - Architecture	41	24	25	25	24	-41.5%
School Total	250	234	243	241	242	-3.2%
School of Business and Industry						
Bachelor - Economics, General	54	47	47	47	54	0.0%
Bachelor - Business Administration and Management	719	655	347	360	387	-46.2%
Bachelor - Logistics, Material, and Supply Chain Management	4	14	20	29	34	750.0%
Bachelor - Accounting	52	72	84	68	51	-1.9%
Bachelor - Pre-Accounting	70	64	341	395	483	590.0%
Masters - Business Administration and Management	135	113	124	100	83	-38.5%
Masters - Logistics, Material, and Supply Chain Management	0	3	9	6	2	-33.3%
School Total	1,034	968	972	1,005	1,094	5.8%
School of Journalism and Graphic Communication						
Bachelor - Journalism	170	167	177	165	136	-20.0%
Bachelor - Public Relations/Image Management	137	129	130	122	80	-41.6%
Bachelor - Graphic Design	90	105	114	114	159	76.7%
Bachelor - Pre-Journalism	109	110	88	96	135	23.9%
School Total	506	511	509	497	510	0.8%
School of Nursing						
Bachelor - Pre-Nursing	277	236	176	185	139	-49.8%
Bachelor - Registered Nurse	191	152	157	141	192	0.5%
Masters - Registered Nurse	19	19	15	17	40	110.5%
School Total	487	407	348	343	371	-23.8%
School of the Environment						
Bachelor - Environmental Studies	26	30	21	24	24	-7.7%
Bachelor - Environmental Science	29	22	26	23	25	-13.8%
Masters - Environmental Science	8	9	7	14	15	87.5%
Research Doctoral - Environmental Science	26	34	35	37	42	61.5%
School Total	89	95	89	98	106	19.1%
Unclassified	448	340	338	306	302	-32.6%
University Grand Total	10,031	9,617	9,179	8,994	9,228	-8.0%

Enrollment by State of Residence

Figure 4: Fall 2022 Enrollment by State of Residence

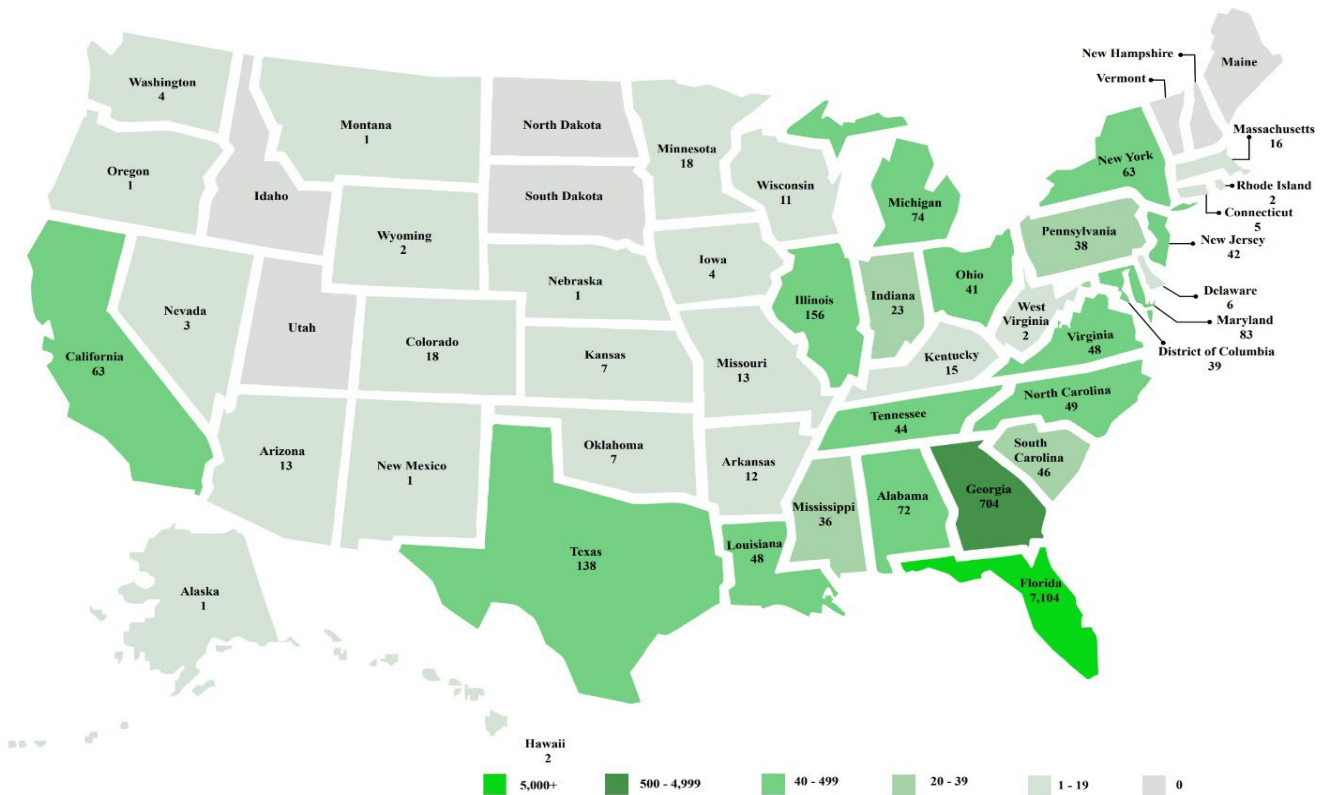


Table 12: Enrollment by State of Residence

State	Fall 2018	Fall 2019	Fall 2020	Fall 2021	Fall 2022	5-yr % Change
Alabama	76	80	63	77	72	-5.3%
Alaska	0	0	1	1	1	0.0%
Arizona	7	9	9	11	13	85.7%
Arkansas	9	9	6	8	12	33.3%
California	46	49	41	50	63	37.0%
Colorado	16	13	12	12	18	12.5%
Connecticut	4	3	2	3	5	25.0%
Delaware	5	6	5	6	6	20.0%
Florida	8,190	7,747	7,288	6,880	7,104	-13.3%
Georgia	521	568	581	646	704	35.1%
Hawaii	1	0	1	2	2	100.0%
Idaho	1	0	0	0	0	-100.0%
Illinois	106	116	109	124	156	47.2%
Indiana	16	16	18	17	23	43.8%
Iowa	3	4	3	2	4	33.3%
Kansas	3	3	2	7	7	133.3%
Kentucky	12	13	11	15	15	25.0%
Louisiana	35	37	30	41	48	37.1%

State	Fall 2018	Fall 2019	Fall 2020	Fall 2021	Fall 2022	5-yr % Change
Maine	0	0	0	0	0	0.0%
Maryland	63	68	73	78	83	31.7%
Massachusetts	9	12	11	12	16	77.8%
Michigan	74	76	60	60	74	0.0%
Minnesota	10	8	10	17	18	80.0%
Mississippi	23	22	21	26	36	56.5%
Missouri	16	16	14	11	13	-18.8%
Montana	2	2	1	1	1	-50.0%
Nebraska	0	3	1	1	1	-66.7%
Nevada	6	5	3	4	3	-50.0%
New Hampshire	1	3	1	1	0	-100.0%
New Jersey	23	22	28	29	42	82.6%
New Mexico	0	0	1	1	1	0.0%
New York	41	46	60	55	63	53.7%
North Carolina	49	47	58	52	49	0.0%
North Dakota	0	0	0	0	0	0.0%
Ohio	36	35	32	41	41	13.9%
Oklahoma	4	6	6	7	7	75.0%
Oregon	0	0	0	0	1	0.0%
Pennsylvania	25	24	21	22	38	52.0%
Rhode Island	1	1	1	1	2	100.0%
South Carolina	36	40	39	49	46	27.8%
South Dakota	1	1	1	0	0	-100.0%
Tennessee	38	37	36	45	44	15.8%
Texas	99	104	108	124	138	39.4%
Utah	1	1	1	0	0	-100.0%
Vermont	0	0	0	0	0	0.0%
Virginia	30	34	32	45	48	60.0%
Washington	7	6	5	4	4	-42.9%
Washington District of Columbia	35	29	30	34	39	11.4%
West Virginia	0	0	0	1	2	100.0%
Wisconsin	11	9	9	9	11	0.0%
Wyoming	2	2	2	1	2	0.0%
Unknown	164	142	185	217	59	-64.0%
Total USA	9,858	9,474	9,032	8,850	9,135	-7.3%
Foreign Countries	173	143	147	144	93	-46.2%
Grand Total	10,031	9,617	9,179	8,994	9,228	-8.0%

Table 13: Enrollment by Foreign Countries

State	Fall 2018	Fall 2019	Fall 2020	Fall 2021	Fall 2022	5-yr % Change
Anguilla	0	1	1	1	0	-100.0%
Antigua And Barbuda	0	1	1	1	2	100.0%
Argentine Republic	2	1	1	1	0	-100.0%

State	Fall 2018	Fall 2019	Fall 2020	Fall 2021	Fall 2022	5-yr % Change
Barbados	0	1	1	1	1	0.0%
Canada	2	2	1	0	2	0.0%
Commonwealth Of Dominica	0	1	2	2	2	100.0%
Commonwealth Of Puerto Rico	1	2	1	1	1	0.0%
Co-operative Republic Of Guyana	0	0	1	1	1	0.0%
Czech Republic	0	1	0	0	0	-100.0%
Dominican Republic	2	1	0	0	0	-100.0%
Federal Republic Of Germany	1	0	0	2	1	0.0%
Federal Republic Of Nigeria	36	30	27	24	15	-58.3%
Federative Republic Of Brazil	1	1	1	0	0	-100.0%
French Republic	2	4	0	2	2	0.0%
Islamic Republic Of Iran	1	0	1	1	1	0.0%
Jamaica	11	9	10	10	6	-45.5%
Kingdom Of Saudi Arabia	19	25	31	28	9	-52.6%
Kingdom Of Spain	0	1	0	0	1	0.0%
Kingdom Of The Netherlands	1	3	2	4	3	200.0%
Nepal	0	1	1	1	0	-100.0%
Netherlands Antilles	9	7	6	3	0	-100.0%
People's Republic Of Bangladesh	2	0	1	1	1	-50.0%
People's Republic Of China	0	1	1	1	1	0.0%
Republic Of Bolivia	0	0	0	1	1	0.0%
Republic Of Bulgaria	2	2	1	1	1	-50.0%
Republic Of Cameroon	0	0	0	1	0	-100.0%
Republic Of Colombia	1	0	1	3	2	100.0%
Republic Of El Salvador	1	0	0	0	0	-100.0%
Republic Of Ethiopia	1	2	3	2	2	100.0%
Republic Of Ghana	28	11	22	16	13	-53.6%
Republic Of Haiti	3	2	2	5	3	0.0%
Republic Of India	5	7	7	6	6	20.0%
Republic Of Kenya	7	2	1	3	1	-85.7%
Republic Of Korea	0	0	0	1	0	-100.0%
Republic Of Pakistan	0	1	2	3	2	100.0%
Republic Of Panama	1	1	0	0	0	-100.0%
Republic Of Peru	2	0	0	0	0	-100.0%
Republic Of The Philippines	0	0	1	1	1	0.0%
Republic Of Trinidad And Tobago	2	3	3	2	2	0.0%
Republic Of Turkey	4	3	3	2	2	-50.0%
Republic Of Yemen	0	1	1	1	0	-100.0%
Republic Of Zambia	0	0	0	0	0	0.0%
Republic Of Zimbabwe	1	1	0	0	0	-100.0%
Socialist Republic Of Vietnam	0	0	0	1	0	-100.0%
State Of Eritrea	0	0	1	1	1	0.0%
State Of Israel	0	0	0	0	0	0.0%
Syrian Arab Republic	0	0	1	1	0	-100.0%
The Commonwealth Of The Bahamas	21	12	8	8	6	-71.4%

State	Fall 2018	Fall 2019	Fall 2020	Fall 2021	Fall 2022	5-yr % Change
Togolese Republic	0	0	0	0	0	0.0%
Turks And Caicos Islands	1	1	0	0	0	-100.0%
Ukraine	1	0	0	0	0	-100.0%
United Kingdom Of Great Britain And Northern Ireland	1	1	0	0	0	-100.0%
United Republic Of Tanzania	1	0	0	0	1	0.0%
Total Foreign Countries	173	143	147	144	93	-46.2%

Enrollment by Florida County of Residence

Figure 5: Fall 2022 Enrollment by Florida County of Residence

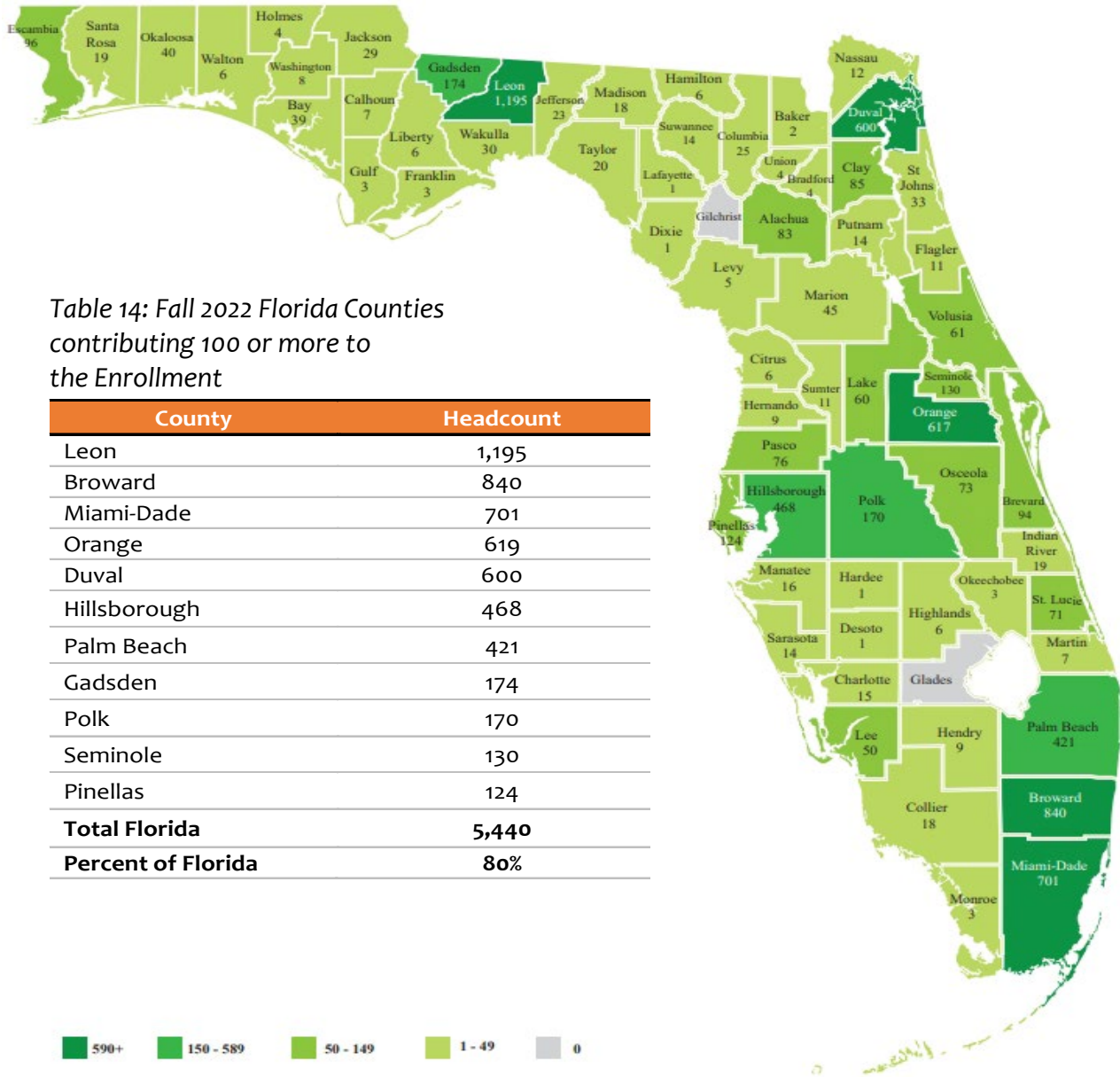


Table 14: Fall 2022 Florida Counties contributing 100 or more to the Enrollment

County	Headcount
Leon	1,195
Broward	840
Miami-Dade	701
Orange	619
Duval	600
Hillsborough	468
Palm Beach	421
Gadsden	174
Polk	170
Seminole	130
Pinellas	124
Total Florida	5,440
Percent of Florida	80%

Table 15: Enrollment by Florida County of Residence

County	Fall 2018	Fall 2019	Fall 2020	Fall 2021	Fall 2022	5-yr % Change
Alachua	111	100	106	94	83	-25.2%
Baker	11	10	8	4	2	-81.8%
Bay	52	39	44	37	39	-25.0%
Bradford	7	8	8	9	4	-42.9%
Brevard	112	101	83	83	94	-16.1%
Broward	1,069	1,050	991	932	840	-21.4%
Calhoun	4	3	8	10	7	75.0%
Charlotte	4	4	7	13	15	275.0%
Citrus	1	1	3	4	6	500.0%
Clay	61	84	74	75	85	39.3%
Collier	15	10	14	16	18	20.0%
Columbia	16	16	20	17	25	56.3%
Desoto	2	0	0	0	1	-50.0%
Dixie	1	1	1	1	1	0.0%
Duval	714	642	620	594	600	-16.0%
Escambia	118	110	92	100	96	-18.6%
Flagler	10	10	7	10	11	10.0%
Franklin	7	5	5	3	3	-57.1%
Gadsden	185	167	167	159	174	-5.9%
Gilchrist	0	0	2	1	0	-100.0%
Glades	1	1	1	0	0	-100.0%
Gulf	5	4	7	4	3	-40.0%
Hamilton	6	4	5	7	6	0.0%
Hardee	1	0	1	0	1	0.0%
Hendry	11	9	8	11	9	-18.2%
Hernando	16	14	8	6	9	-43.8%
Highlands	15	9	8	6	6	-60.0%
Hillsborough	463	480	453	448	468	1.1%
Holmes	6	8	7	3	4	-33.3%
Indian River	16	16	17	17	19	18.8%
Jackson	32	32	32	30	29	-9.4%
Jefferson	39	34	32	31	23	-41.0%
Lafayette	0	0	1	1	1	0.0%
Lake	67	65	57	51	60	-10.4%
Lee	79	68	59	55	50	-36.7%
Leon	1,566	1,424	1,401	1,278	1,195	-23.7%
Levy	2	0	0	2	5	150.0%
Liberty	7	6	5	3	6	-14.3%
Madison	28	29	30	25	18	-35.7%
Manatee	40	22	17	18	16	-60.0%
Marion	55	42	36	45	45	-18.2%
Martin	14	8	10	10	7	-50.0%
Miami-Dade	1,019	980	817	766	701	-31.2%
Monroe	6	9	10	5	3	-50.0%
Nassau	11	13	11	13	12	9.1%
Okaloosa	47	42	46	48	40	-14.9%
Okeechobee	3	4	4	5	3	0.0%
Orange	650	630	638	595	617	-5.1%
Osceola	66	66	51	56	73	10.6%
Palm Beach	481	480	438	434	421	-12.5%
Pasco	60	68	66	60	76	26.7%
Pinellas	174	165	145	116	124	-28.7%

County	Fall 2018	Fall 2019	Fall 2020	Fall 2021	Fall 2022	5-yr % Change
Polk	183	165	154	159	170	-7.1%
Putnam	20	12	9	12	14	-30.0%
Santa Rosa	30	29	26	19	19	-36.7%
Sarasota	23	26	22	15	14	-39.1%
Seminole	136	130	129	118	130	-4.4%
St. Johns	27	32	30	31	33	22.2%
St. Lucie	92	91	81	69	71	-22.8%
Sumter	6	4	3	4	11	83.3%
Suwannee	9	10	8	13	14	55.6%
Taylor	26	23	23	23	20	-23.1%
Union	2	2	1	3	4	100.0%
Volusia	88	69	64	54	61	-30.7%
Wakulla	34	36	34	36	30	-11.8%
Walton	18	18	14	7	6	-66.7%
Washington	10	7	9	6	8	-20.0%
Unknown	0	0	0	0	345	0.0%
Total Florida Counties	8,190	7,747	7,288	6,880	7,104	-13.3%
Out-of-State	1,668	1,727	1,744	1,970	2,031	21.8%
Total USA	9,858	9,474	9,032	8,850	9,135	-7.3%
Foreign Countries	173	143	147	144	93	-46.2%
Grand Total	10,031	9,617	9,179	8,994	9,228	-8.0%

Undergraduate Enrollment Overview

Figure 6: Fall 2022 Undergraduate Enrollment Overview

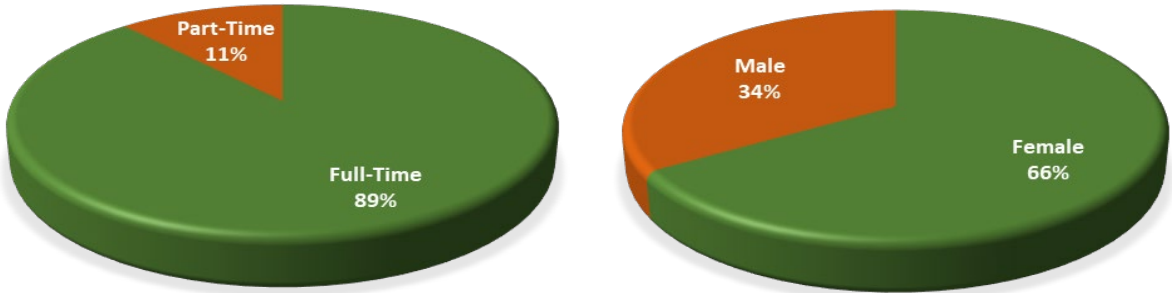


Table 16: Undergraduate Enrollment

Category	Fall 2018	Fall 2019	Fall 2020	Fall 2021	Fall 2022	5-yr % Change
Gender						
Female	5,016	4,910	4,659	4,623	4,945	-1.4%
Male	2,708	2,589	2,423	2,377	2,496	-7.8%
Total	7,724	7,499	7,082	7,000	7,441	-3.7%
Course Load						
Full-Time	6,939	6,789	6,233	6,196	6,615	-4.7%
Part-Time	785	710	849	804	826	5.2%
Total	7,724	7,499	7,082	7,000	7,441	-3.7%
Ethnicity						
African American	6,819	6,636	6,277	6,247	6,704	-1.7%
American Indian	1	2	4	5	5	400.0%
Asian	39	38	33	26	25	-35.9%
Hispanic	281	315	333	333	346	23.1%
Native Hawaiian	0	0	0	0	0	0.0%
Non-Resident Alien	41	28	22	15	13	-68.3%
Two or more races	296	252	205	180	139	-53.0%
White	247	228	208	194	209	-15.4%
No Race Reported	0	0	0	0	0	0.0%
Total	7,724	7,499	7,082	7,000	7,441	-3.7%
State of Residency						
Florida	6,431	6,480	6,187	5,781	5,745	-10.7%
Out-of-State	1,123	1,244	1,312	1,301	1,696	51.0%
Total	7,554	7,724	7,499	7,082	7,441	-1.5%
Age Range						
17 and Under	28	23	19	18	23	-17.9%
18 – 21	5,130	5,268	5,082	4,715	4,932	-3.9%
22 – 24	1,731	1,784	1,793	1,767	1,871	8.1%
25 – 30	459	451	413	386	418	-8.9%
31 – 40	126	116	118	121	128	1.6%
41 – 64	79	81	73	73	68	-13.9%
65 and Over	1	1	1	2	1	0.0%
Total	7,554	7,724	7,499	7,082	7,441	-1.5%

Category	Fall 2018	Fall 2019	Fall 2020	Fall 2021	Fall 2022	5-yr % Change
Degree Level Sought						
Baccalaureate	7,276	7,139	6,821	6,764	7,216	-0.8%
Pharmacy	448	360	261	236	225	-49.8%
Total	7,724	7,499	7,082	7,000	7,441	-3.7%
Classification						
Freshmen	2,215	1,822	1,350	1,313	1,710	-22.8%
Sophomore	1,498	1,676	1,555	1,433	1,463	-2.3%
Junior	1,867	1,822	2,094	2,085	2,059	10.3%
Senior	1,940	2,177	2,083	2,169	2,209	13.9%
First Professional	204	2	0	0	0	-100.0%
Total	7,724	7,499	7,082	7,000	7,441	-3.7%
Strategic Emphasis						
Education	46	57	64	91	113	145.7%
GAP Analysis	279	306	328	304	284	1.8%
Global	20	19	22	19	18	-10.0%
Health	1,612	1,617	1,465	1,433	1,710	6.1%
STEM	1,903	1,885	1,886	1,884	2,022	6.3%
Not a Program of Strategic Emphasis	3,864	3,615	3,317	3,269	3,294	-14.8%
Total	7,724	7,499	7,082	7,000	7,441	-3.7%
College/School						
College of Agriculture and Food Sciences	272	287	288	288	341	25.4%
College of Education	257	265	282	270	300	16.7%
FAMU-FSU College of Engineering	336	332	343	358	429	27.7%
College of Pharmacy & Pharmaceutical Sciences, Institute of Public Health	458	380	288	258	244	-46.7%
College of Science and Technology	1,066	1,035	1,018	987	1,004	-5.8%
College of Social Sciences, Arts and Humanities	2,146	2,050	1,858	1,775	1,871	-12.8%
School of Allied Health Sciences	1,052	1,137	1,059	1,079	1,135	7.9%
School of Architecture and Engineering Technology	209	210	218	216	218	4.3%
School of Business and Industry	899	852	839	899	1,009	12.2%
School of Journalism and Graphic Communication	506	511	509	497	510	0.8%
School of Nursing	468	388	333	326	331	-29.3%
School of the Environment	55	52	47	47	49	-10.9%
Total	7,724	7,499	7,082	7,000	7,441	-3.7%

Graduate Enrollment Overview

Figure 7: Fall 2022 Graduate Enrollment Overview

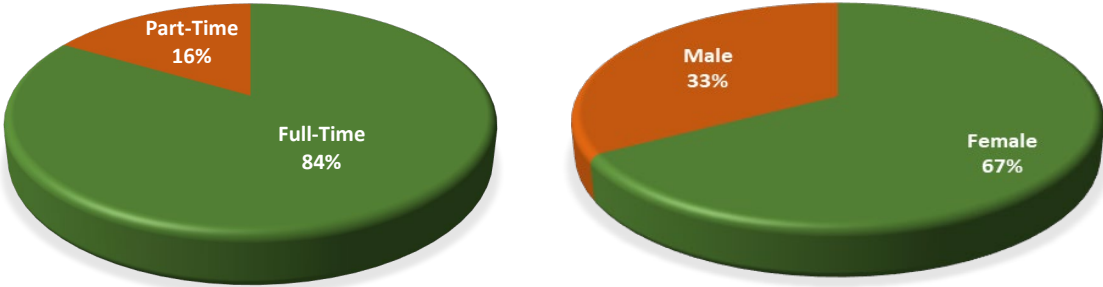


Table 17: Graduate Enrollment

Category	Fall 2018	Fall 2019	Fall 2020	Fall 2021	Fall 2022	5-yr % Change
Gender						
Female	1,184	1,149	1,166	1,126	1,002	-15.4%
Male	675	629	593	562	483	-28.4%
Total	1,859	1,778	1,759	1,688	1,485	-20.1%
Course Load						
Full-Time	1,624	1,568	1,487	1,399	1,240	-23.6%
Part-Time	235	210	272	289	245	4.3%
Total	1,859	1,778	1,759	1,688	1,485	-20.1%
Ethnicity						
African American	1,277	1,200	1,226	1,190	1,045	-18.2%
American Indian	1	0	0	0	1	0.0%
Asian	52	38	30	33	39	-25.0%
Hispanic	138	142	153	148	148	7.2%
Native Hawaiian	4	2	2	0	0	-100.0%
Non-Resident Alien	48	47	48	35	21	-56.3%
Two or more races	35	57	54	50	49	40.0%
White	301	292	246	232	182	-39.5%
No Race Reported	3	0	0	0	0	-100.0%
Total	1,859	1,778	1,759	1,688	1,485	-20.1%
State of Residency						
Florida	1,301	1,239	1,189	1,171	1,202	-7.6%
Out-of-State	558	539	570	517	283	-49.3%
Total	1,859	1,778	1,759	1,688	1,485	-20.1%
Age Range						
17 and Under	0	0	0	0	0	0.0%
18 - 21	31	24	26	18	40	29.0%
22 - 24	609	601	609	565	482	-20.9%
25 - 30	773	718	669	632	507	-34.4%
31 - 40	294	297	315	327	307	4.4%
41 - 64	151	136	140	143	147	-2.6%
65 and Over	1	2	0	3	2	100.0%
Total	1,859	1,778	1,759	1,688	1,485	-20.1%

Category	Fall 2018	Fall 2019	Fall 2020	Fall 2021	Fall 2022	5-yr % Change
Degree Level Sought						
Masters	669	609	681	678	576	-13.9%
Doctorate	291	313	332	316	335	15.1%
Law	530	563	474	416	361	-31.9%
Pharmacy	369	293	272	278	213	-42.3%
Total	1,859	1,778	1,759	1,688	1,485	-20.1%
Classification						
First Professional	973	931	819	765	644	-33.8%
Graduate	886	847	940	923	841	-5.1%
Total	1,859	1,778	1,759	1,688	1,485	-20.1%
Strategic Emphasis						
Education	53	53	64	53	38	-28.3%
Health	679	608	613	616	552	-18.7%
STEM	217	190	214	225	223	2.8%
Not a Program of Strategic Emphasis	910	927	868	794	672	-26.2%
Total	1,859	1,778	1,759	1,688	1,485	-20.1%
College/School						
College of Agriculture and Food Sciences	23	17	21	27	29	26.1%
College of Education	154	150	171	194	154	0.0%
FAMU-FSU College of Engineering	59	61	66	69	68	15.3%
College of Law	530	563	474	416	361	-31.9%
College of Pharmacy & Pharmaceutical Sciences, Institute of Public Health	502	429	434	440	367	-26.9%
College of Science and Technology	60	42	51	47	43	-28.3%
College of Social Sciences, Arts and Humanities	144	154	163	137	112	-22.2%
School of Allied Health Sciences	158	160	164	159	145	-8.2%
School of Architecture and Engineering Technology	41	24	25	25	24	-41.5%
School of Business and Industry	135	116	133	106	85	-37.0%
School of Nursing	19	19	15	17	40	110.5%
School of the Environment	34	43	42	51	57	67.6%
Total	1,859	1,778	1,759	1,688	1,485	-20.1%

Unclassified Enrollment Overview

Figure 8: Fall 2022 Unclassified Enrollment Overview

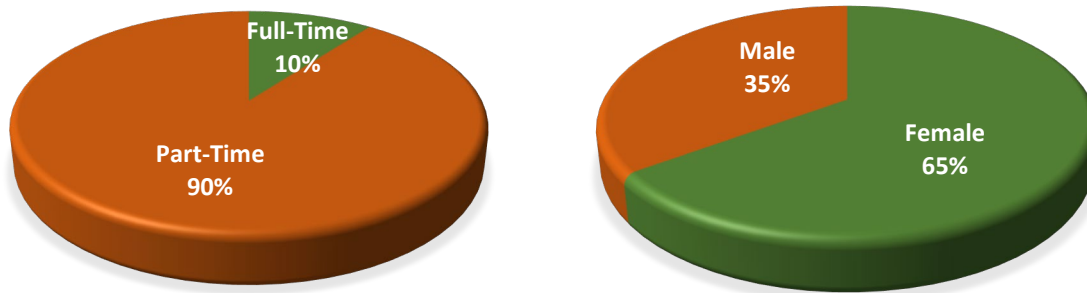


Table 18: Unclassified Enrollment

Category	Fall 2018	Fall 2019	Fall 2020	Fall 2021	Fall 2022	5-yr % Change
Gender						
Female	265	190	193	172	196	-26.0%
Male	183	150	145	134	106	-42.1%
Total	448	340	338	306	302	-32.6%
Course Load						
Full-Time	28	18	17	24	31	10.7%
Part-Time	420	322	321	282	271	-35.5%
Total	448	340	338	306	302	-32.6%
Ethnicity						
African American	152	123	128	105	111	-27.0%
American Indian	0	0	0	3	2	-33.3%
Asian	13	6	8	6	5	-61.5%
Hispanic	22	18	23	17	19	-13.6%
Native Hawaiian	1	2	3	3	4	300.0%
Non-Resident Alien	5	1	0	3	2	-60.0%
Two or more races	3	5	1	4	0	-100.0%
White	248	185	175	165	158	-36.3%
No Race Reported	4	0	0	0	1	-75.0%
Total	448	340	338	306	302	-32.6%
State of Residency						
Florida	409	319	318	248	294	-28.1%
Out-of-State	39	21	20	58	8	-79.5%
Total	448	340	338	306	302	-32.6%
Age Range						
17 and Under	218	141	162	127	142	-34.9%
18 - 21	147	127	116	122	103	-29.9%
22 - 24	22	23	16	36	24	9.1%
25 - 30	31	18	18	9	14	-54.8%
31 - 40	15	18	18	6	11	-26.7%
41 - 64	12	11	8	5	7	-41.7%
65 and Over	3	2	0	1	1	-66.7%
Total	448	340	338	306	302	-32.6%

Category	Fall 2018	Fall 2019	Fall 2020	Fall 2021	Fall 2022	5-yr % Change
Non-Degree Seeking						
Undergraduate	25	31	20	40	21	-16.0%
Graduate	34	38	35	16	29	-14.7%
Teacher Certification	3	2	1	0	0	-100.0%
High School Dual Enrolled	317	222	241	196	215	-32.2%
Community College Dual Enrolled	3	6	4	0	0	-100.0%
Transient	1	4	0	1	1	0.0%
International Exchange Program Undergraduate	23	4	5	16	14	-39.1%
International Exchange Program Graduate	1	0	1	1	4	300.0%
FAMU-FSU Coop	41	33	31	36	18	-56.1%
Total	448	340	338	306	302	-32.6%

First Time in College Enrollment Overview

Figure 9: First Time in College Enrollment Overview

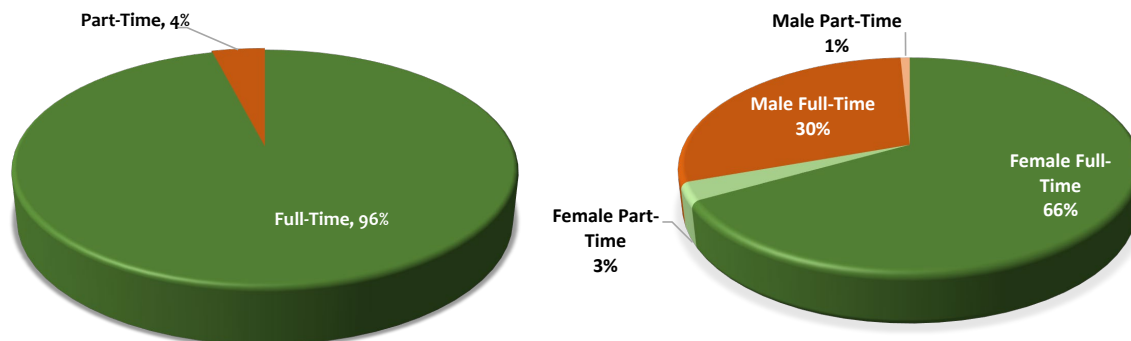


Table 19: First Time in College Enrollment

Category	Fall 2018		Fall 2019		Fall 2020		Fall 2021		Fall 2022		5-yr % Change	
	Full	Part	Full	Part	Full	Part	Full	Part	Full	Part	Full	Part
FTIC	1,417	51	1,338	24	1,000	41	1,140	30	1,486	54	4.9%	5.9%
Gender												
Female	925	33	913	14	670	27	799	22	1,028	42	11.1%	27.3%
Male	492	18	425	10	330	14	341	8	458	12	-6.9%	-33.3%
Total	1,417	51	1,338	24	1,000	41	1,140	30	1,486	54	4.9%	5.9%
Ethnicity												
African American	1,237	43	1,190	21	886	37	1,040	27	1,350	46	9.1%	7.0%
American Indian	0	0	0	1	1	0	0	0	1	0	0.0%	-100.0%
Asian	12	0	2	0	2	1	4	0	4	0	-66.7%	-100.0%
Hispanic	89	5	80	2	63	3	53	1	91	3	2.2%	-40.0%
Native Hawaiian	0	0	0	0	0	0	0	0	0	0	0.0%	0.0%
Non-Resident Alien	1	0	3	0	0	0	1	1	0	0	-100.0%	-100.0%
Two or more races	49	2	41	0	33	0	14	0	14	1	-71.4%	-50.0%
White	29	1	22	0	15	0	28	1	26	4	-10.3%	300.0%
Total	1,417	51	1,338	24	1,000	41	1,140	30	1,486	54	4.9%	5.9%
Residency												
In-State	1,135	47	1,028	23	758	37	780	17	978	39	-13.8%	-17.0%
Out-of-State	282	4	310	1	242	4	360	13	508	15	80.1%	275.0%
Total	1,417	51	1,338	24	1,000	41	1,140	30	1,486	54	4.9%	5.9%
Strategic Emphasis												
Education	7	0	8	0	2	0	2	0	3	0	-57.1%	0.0%
GAP Analysis	20	1	22	1	14	2	12	1	20	0	0.0%	-100.0%
Global	2	0	4	0	2	0	1	0	2	0	0.0%	0.0%
Health	207	14	187	4	128	5	166	3	309	15	49.3%	7.1%
STEM	398	12	393	7	297	14	339	12	451	20	13.3%	66.7%
Not a Program of Strategic Emphasis	783	24	724	12	557	20	620	14	701	19	-10.5%	-20.8%
Total	1,417	51	1,338	24	1,000	41	1,140	30	1,486	54	4.9%	5.9%
College/School												
College of Agriculture and Food Sciences	50	1	51	1	46	1	52	2	68	4	36.0%	300.0%
College of Education	40	1	57	2	21	0	28	0	46	0	15.0%	-100.0%
FAMU-FSU College of Engineering	99	5	109	2	80	4	81	2	144	0	45.5%	-100.0%
College of Pharmacy & Pharmaceutical Sciences, Institute of Public Health	91	3	67	1	51	4	63	2	69	0	-24.2%	-100.0%
College of Science and Technology	228	2	205	2	154	5	178	8	201	12	-11.8%	500.0%
College of Social Sciences, Arts and Humanities	334	12	298	8	264	11	252	7	362	15	8.4%	25.0%
School of Allied Health Sciences	136	12	126	3	80	2	112	1	121	4	-11.0%	-66.7%
School of Architecture and Engineering Technology	20	4	30	2	15	4	24	1	33	4	65.0%	0.0%
School of Business and Industry	214	6	169	0	134	2	181	4	245	4	14.5%	-33.3%
School of Journalism and Graphic Communication	75	2	85	3	49	3	59	1	64	0	-14.7%	-100.0%
School of Nursing	125	3	133	0	98	5	105	2	119	11	-4.8%	266.7%
School of the Environment	5	0	8	0	8	0	5	0	14	0	180.0%	0.0%
Unclassified	0	0	0	0	0	0	0	0	0	0	0.0%	0.0%
Total	1,417	51	1,338	24	1,000	41	1,140	30	1,486	54	4.9%	5.9%

Table 20: Fall 2022 First Time in College Enrollment by Top 30 Florida High Schools

High School	City	Fall 2018	Fall 2019	Fall 2020	Fall 2021	Fall 2022	5-yr % Change
Paxon School For Advanced Studies	Jacksonville	17	17	17	13	21	23.5%
Tampa Bay Tech High School	Tampa	18	19	11	11	20	11.1%
Miami Norland Senior High School	Miami Gardens	30	15	6	7	18	-40.0%
Robert E. Lee Senior High School	Jacksonville	15	10	9	12	18	20.0%
First Coast High School	Jacksonville	9	9	14	8	16	77.8%
James S. Rickards High School	Tallahassee	20	13	7	16	14	-30.0%
Leon High School	Tallahassee	7	6	6	8	14	100.0%
Seminole High School	Sanford	5	10	4	9	14	180.0%
Oakleaf High School	Orange Park	2	14	3	7	13	550.0%
Lincoln High School	Tallahassee	21	9	13	13	12	-42.9%
Ocoee High School	Ocoee	8	8	14	10	12	50.0%
Fort Lauderdale High School	Fort Lauderdale	8	9	8	7	11	37.5%
Suncoast Community High School	Riviera Beach	15	10	5	7	11	-26.7%
Andrew Jackson Senior High School	Jacksonville	0	2	0	1	10	400.0%
Apopka High School	Apopka	4	9	4	4	10	150.0%
Everglades High School	Miramar	4	7	8	5	10	150.0%
Florida State University School	Tallahassee	9	10	3	5	10	11.1%
Wellington High School	Wellington	1	2	1	4	10	900.0%
American Senior High School	Hialeah	13	9	8	10	9	-30.8%
Barbara Goleman High School	Miami Lakes	2	3	1	4	9	350.0%
Coral Reef Senior High School	Miami	11	9	4	9	9	-18.2%
Howard W Blake High School	Tampa	3	3	2	3	9	200.0%
William H Turner Tech Arts High School	Miami	11	16	3	7	9	-18.2%
William M Raines Senior High School 165	Jacksonville	10	6	11	5	9	-10.0%
Atlantic Community High School	Delray Beach	6	5	7	4	8	33.3%
Douglas Anderson School Arts	Jacksonville	0	2	4	2	8	300.0%
Edgewater High School	Orlando	4	5	5	5	8	100.0%
George Jenkins High School	Lakeland	2	1	3	1	8	300.0%
Jones High School	Orlando	3	11	14	5	8	166.7%
Lawton Chiles High School	Tallahassee	4	1	1	5	8	100.0%
Miami Lakes Education Center	Miami Lakes	8	2	1	1	8	0.0%
Fall 2022 Top 30 Total		270	252	197	208	354	31.1%

First Time in College Enrollment by State of Residence

Figure 10: Fall 2022 FTIC Enrollment by State of Residence

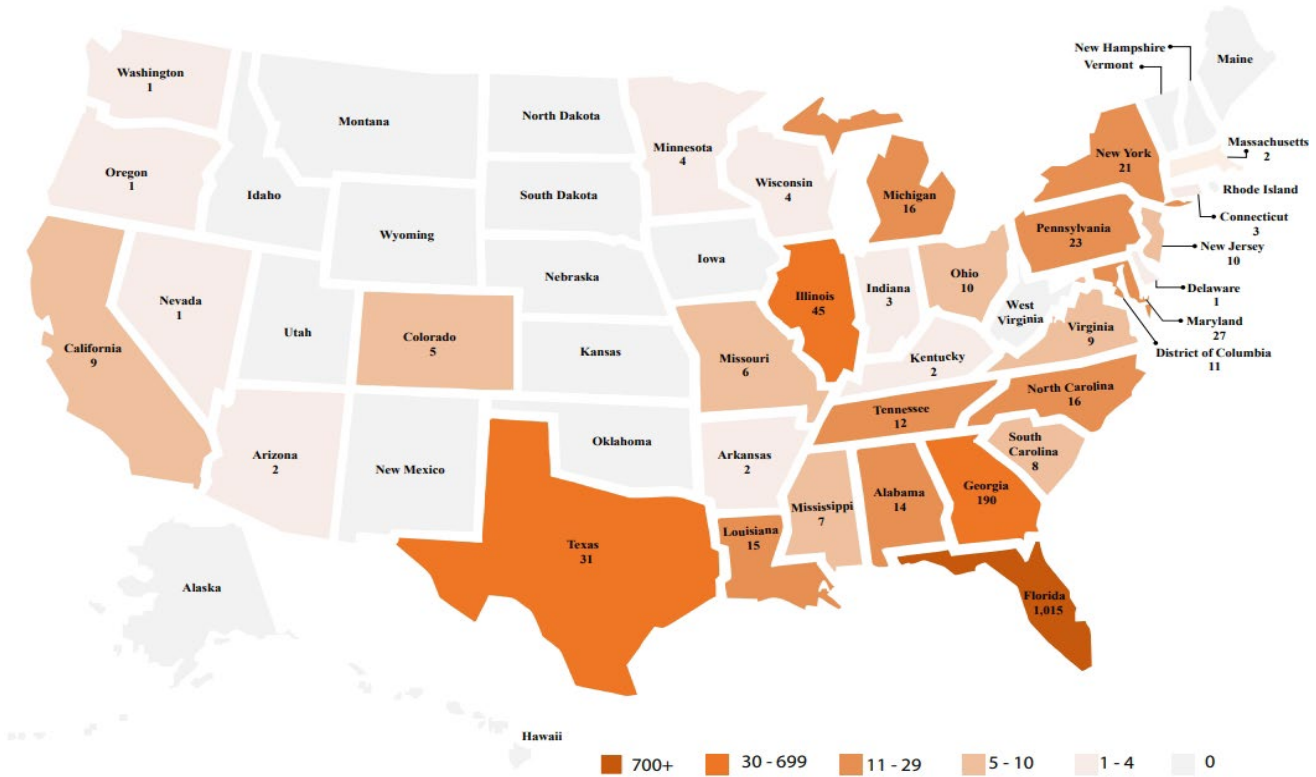


Table 21: FTIC Enrollment by State

State	Fall 2018	Fall 2019	Fall 2020	Fall 2021	Fall 2022	5-yr % Change
Alabama	13	9	3	15	14	7.7%
Alaska	0	0	1	0	0	-100.0%
Arizona	1	0	0	3	2	100.0%
Arkansas	0	2	1	3	2	0.0%
California	10	8	5	9	9	-10.0%
Colorado	3	0	2	2	5	66.7%
Connecticut	1	0	1	1	3	200.0%
Delaware	0	0	0	1	1	0.0%
District of Columbia	15	6	4	8	11	-26.7%
Florida	1,156	1,024	772	786	1,015	-12.2%
Georgia	111	143	115	130	190	71.2%
Hawaii	0	0	1	1	0	-100.0%
Idaho	0	0	0	0	0	0.0%
Illinois	18	27	22	32	45	150.0%
Indiana	4	2	5	1	3	-25.0%
Iowa	0	1	0	0	0	-100.0%
Kansas	0	1	0	2	0	-100.0%
Kentucky	3	3	1	2	2	-33.3%
Louisiana	5	7	1	13	15	200.0%
Maine	0	0	0	0	0	0.0%
Maryland	22	25	17	13	27	22.7%
Massachusetts	3	3	2	2	2	-33.3%

State	Fall 2018	Fall 2019	Fall 2020	Fall 2021	Fall 2022	5-yr % Change
Michigan	16	15	8	11	16	0.0%
Minnesota	1	1	2	3	4	300.0%
Mississippi	4	2	0	6	7	75.0%
Missouri	1	5	1	1	6	500.0%
Montana	1	0	0	0	0	-100.0%
Nebraska	0	0	0	1	0	-100.0%
Nevada	1	1	0	2	1	0.0%
New Hampshire	0	1	0	0	0	-100.0%
New Jersey	2	3	6	8	10	400.0%
New Mexico	0	0	0	0	0	0.0%
New York	7	7	9	5	21	200.0%
North Carolina	11	9	18	8	16	45.5%
North Dakota	0	0	0	0	0	0.0%
Ohio	6	11	4	14	10	66.7%
Oklahoma	0	1	0	0	0	-100.0%
Oregon	0	0	0	0	1	0.0%
Pennsylvania	5	3	4	6	23	360.0%
Rhode Island	0	0	0	0	0	0.0%
South Carolina	6	6	2	10	8	33.3%
South Dakota	0	0	0	0	0	0.0%
Tennessee	8	4	6	11	12	50.0%
Texas	24	15	13	32	31	29.2%
Utah	0	0	0	0	0	0.0%
Vermont	0	0	0	0	0	0.0%
Virginia	4	9	4	10	9	125.0%
Washington	1	0	0	2	1	0.0%
West Virginia	0	0	0	1	0	-100.0%
Wisconsin	0	1	1	2	4	300.0%
Wyoming	0	0	0	0	0	0.0%
Unknown	4	4	10	11	14	250.0%
Total USA	1,467	1,359	1,041	1,168	1,540	5.0%
Foreign Countries	1	3	0	2	0	-100.0%
Grand Total	1,468	1,362	1,041	1,170	1,540	4.9%

Table 22: FTIC Enrollment by Foreign Countries

State	Fall 2018	Fall 2019	Fall 2020	Fall 2021	Fall 2022	5-yr % Change
The Commonwealth Of The Bahamas	0	0	0	1	0	-100.0%
Republic Of Colombia	0	0	0	1	0	-100.0%
Czech Republic	0	1	0	0	0	-100.0%
French Republic	0	1	0	0	0	-100.0%
Jamaica	0	1	0	0	0	-100.0%
Federal Republic Of Nigeria	1	0	0	0	0	-100.0%
Total Foreign Countries	1	3	0	2	0	-100.0%

First Time in College Enrollment by Florida County of Residence

Figure 11: FTIC Fall 2022 Enrollment by Florida County of Residence

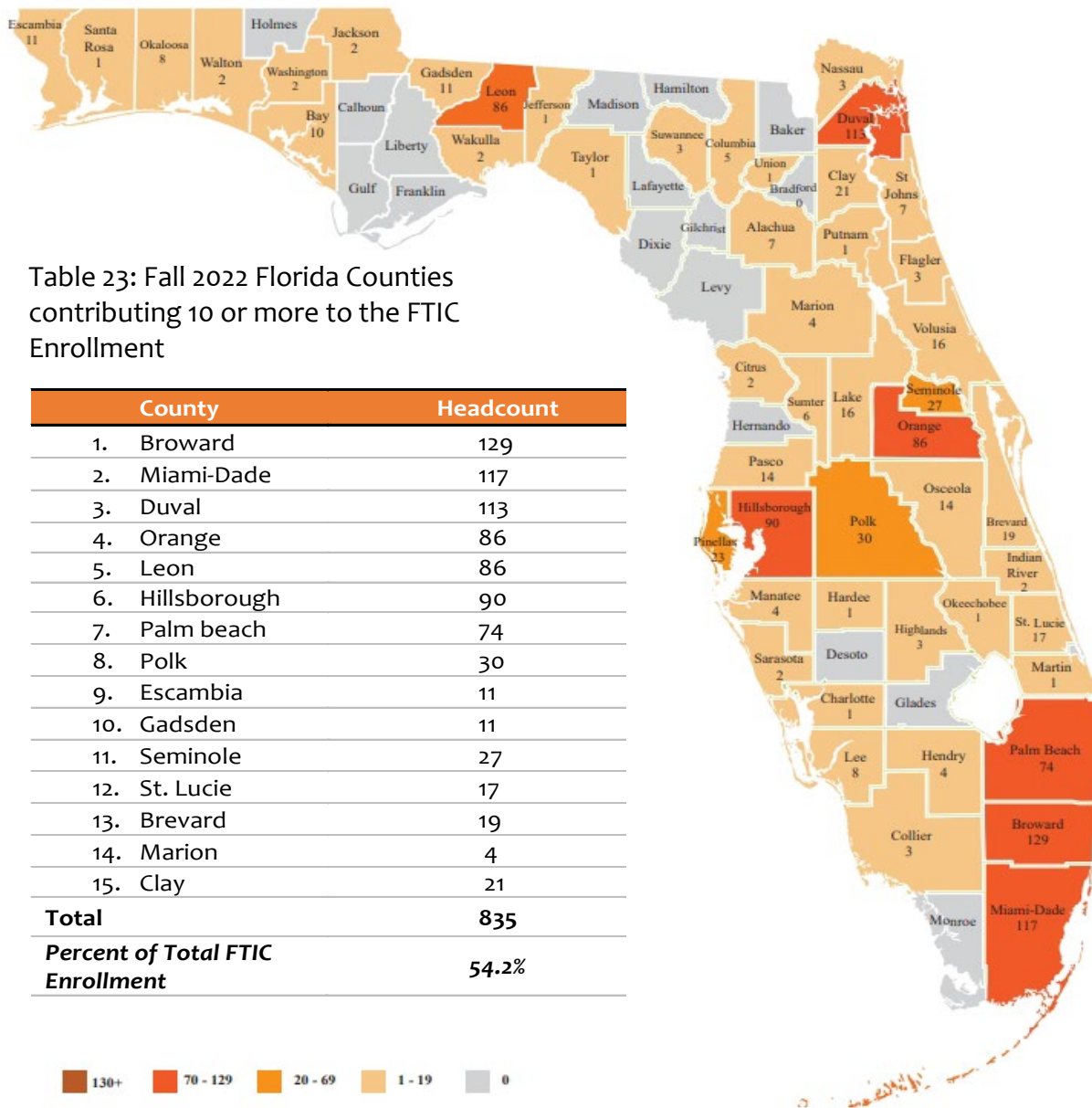


Table 23: Fall 2022 Florida Counties contributing 10 or more to the FTIC Enrollment

County	Headcount
1. Broward	129
2. Miami-Dade	117
3. Duval	113
4. Orange	86
5. Leon	86
6. Hillsborough	90
7. Palm beach	74
8. Polk	30
9. Escambia	11
10. Gadsden	11
11. Seminole	27
12. St. Lucie	17
13. Brevard	19
14. Marion	4
15. Clay	21
Total	835
Percent of Total FTIC Enrollment	54.2%

Table 24: FTIC Enrollment by Florida County of Residence

Florida County	Fall 2018	Fall 2019	Fall 2020	Fall 2021	Fall 2022	5-yr % Change
Alachua	18	12	9	8	7	-61.1%
Baker	2	2	0	1	0	-100.0%
Bay	8	4	6	1	10	25.0%
Bradford	4	3	0	0	0	-100.0%
Brevard	15	11	6	11	19	26.7%
Broward	204	173	128	130	129	-36.8%
Calhoun	0	0	1	0	0	-100.0%
Charlotte	0	2	2	2	1	-50.0%
Citrus	0	1	0	0	2	100.0%
Clay	5	17	8	10	21	320.0%
Collier	3	1	5	5	3	0.0%
Columbia	3	2	4	4	5	66.7%
Desoto	0	0	0	0	0	0.0%
Dixie	0	0	0	0	0	0.0%
Duval	100	108	97	85	113	13.0%
Escambia	13	11	11	19	11	-15.4%
Flagler	0	2	1	3	3	50.0%
Franklin	1	1	0	0	0	-100.0%
Gadsden	20	13	13	15	11	-45.0%
Gilchrist	0	0	0	0	0	0.0%
Glades	0	0	0	0	0	0.0%
Gulf	0	0	0	0	0	0.0%
Hamilton	2	0	1	2	0	-100.0%
Hardee	1	0	1	0	1	0.0%
Hendry	4	1	2	2	4	0.0%
Hernando	1	2	0	0	0	-100.0%
Highlands	0	1	3	0	3	200.0%
Hillsborough	96	86	77	61	90	-6.3%
Holmes	0	0	0	0	0	0.0%
Indian River	1	3	1	1	2	100.0%
Jackson	0	3	2	1	2	-33.3%
Jefferson	4	2	4	3	1	-75.0%
Lafayette	0	0	0	0	0	0.0%
Lake	14	7	4	7	16	14.3%
Lee	12	7	8	7	8	-33.3%
Leon	109	79	42	70	86	-21.1%
Levy	0	0	0	0	0	0.0%
Liberty	0	0	0	0	0	0.0%
Madison	1	1	2	0	0	-100.0%
Manatee	2	1	4	2	4	100.0%
Marion	9	5	3	11	4	-55.6%
Martin	2	1	0	0	1	-50.0%
Miami-Dade	223	167	71	93	117	-47.5%
Monroe	0	1	1	0	0	-100.0%
Nassau	3	2	1	4	3	0.0%
Okaloosa	4	4	7	6	8	100.0%
Okeechobee	0	1	1	1	1	0.0%
Orange	74	97	91	72	86	16.2%
Osceola	4	8	7	6	14	250.0%
Palm Beach	80	72	55	54	74	-7.5%
Pasco	9	16	7	8	14	55.6%
Pinellas	25	28	14	9	23	-8.0%

Florida County	Fall 2018	Fall 2019	Fall 2020	Fall 2021	Fall 2022	5-yr % Change
Polk	17	21	24	24	30	76.5%
Putnam	7	1	1	3	1	-85.7%
Santa Rosa	2	1	3	0	1	-50.0%
Sarasota	2	3	2	1	2	0.0%
Seminole	15	15	9	15	27	80.0%
St. Johns	7	5	5	4	7	0.0%
St. Lucie	10	10	5	13	17	70.0%
Sumter	0	0	0	1	6	500.0%
Suwannee	2	3	0	2	3	50.0%
Taylor	5	1	2	1	1	-80.0%
Union	0	0	0	1	1	0.0%
Volusia	7	5	14	6	16	128.6%
Wakulla	5	0	4	1	2	-60.0%
Walton	0	1	2	0	2	100.0%
Washington	1	0	1	0	2	100.0%
Total Florida Counties	1,156	1,024	772	786	1,015	-12.2%
Out-of-State	311	335	269	382	525	68.8%
Total USA	1,467	1,359	1,041	1,168	1,540	5.0%
Foreign Countries	1	3	0	2	0	-100.0%
Grand Total	1,468	1,362	1,041	1,170	1,540	4.9%

Source: Student Instruction File (SIF) from 1995 to 2022