



# ENROLLMENT

# Enrollment Overview

Figure 3: Historical Enrollment

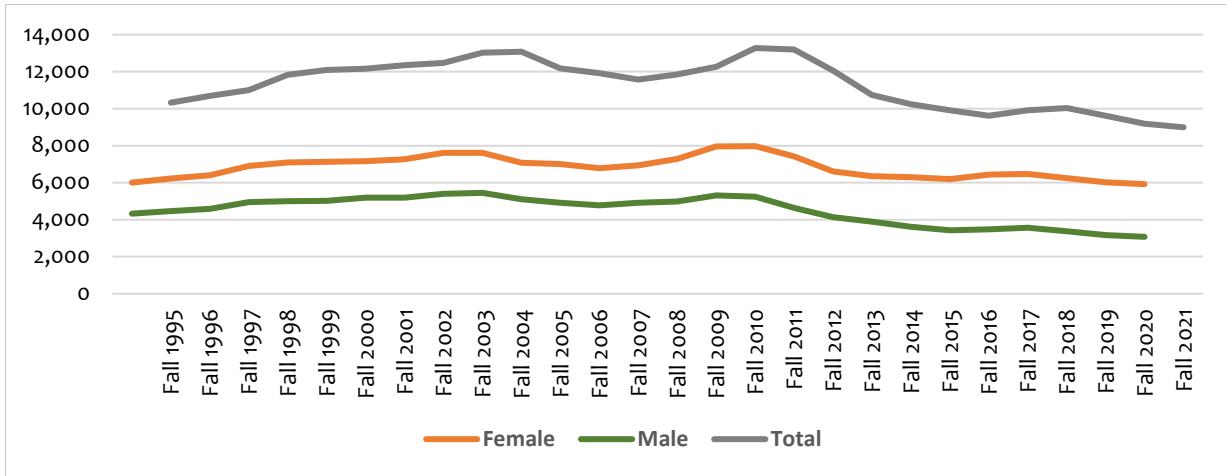


Table 9: Historical Enrollment

Year	Female		Male		Total
	N	%	N	%	
Fall 1995	6,009	58.1%	4,325	41.9%	10,334
Fall 1996	6,228	58.2%	4,469	41.8%	10,697
Fall 1997	6,408	58.3%	4,590	41.7%	10,998
Fall 1998	6,895	58.2%	4,942	41.8%	11,837
Fall 1999	7,097	58.7%	5,003	41.3%	12,100
Fall 2000	7,135	58.7%	5,026	41.3%	12,161
Fall 2001	7,166	58.0%	5,183	42.0%	12,349
Fall 2002	7,273	58.3%	5,195	41.7%	12,468
Fall 2003	7,620	58.5%	5,403	41.5%	13,023
Fall 2004	7,618	58.3%	5,449	41.7%	13,070
Fall 2005	7,070	58.1%	5,104	41.9%	12,177
Fall 2006	7,001	58.8%	4,909	41.2%	11,913
Fall 2007	6,783	58.6%	4,784	41.4%	11,567
Fall 2008	6,940	58.6%	4,908	41.4%	11,848
Fall 2009	7,279	59.4%	4,982	40.6%	12,261
Fall 2010	7,964	60.0%	5,313	40.0%	13,277
Fall 2011	7,973	60.4%	5,234	39.6%	13,207
Fall 2012	7,419	61.6%	4,632	38.4%	12,051
Fall 2013	6,604	61.5%	4,134	38.5%	10,738
Fall 2014	6,346	62.0%	3,887	38.0%	10,233
Fall 2015	6,297	63.5%	3,623	36.5%	9,920
Fall 2016	6,195	64.4%	3,419	35.6%	9,614
Fall 2017	6,428	64.9%	3,481	35.1%	9,909
Fall 2018	6,465	64.5%	3,566	35.5%	10,031
Fall 2019	6,249	65.0%	3,368	35.0%	9,617
Fall 2020	6,018	65.6%	3,161	34.4%	9,179
Fall 2021	5,921	65.8%	3,073	34.2%	8,994

Table 10: Enrollment Overview

Category	Fall 2017	Fall 2018	Fall 2019	Fall 2020	Fall 2021	5-yr % Change
<b>Gender</b>						
Female	6,428	6,465	6,249	6,018	5,921	-7.9%
Male	3,481	3,566	3,368	3,161	3,073	-11.7%
Total	9,909	10,031	9,617	9,179	8,994	-9.2%
<b>Attendance Status</b>						
Full-Time	8,521	8,591	8,375	7,737	7,619	-10.6%
Part-Time	1,388	1,440	1,242	1,442	1,375	-0.9%
Total	9,909	10,031	9,617	9,179	8,994	-9.2%
<b>Ethnicity</b>						
African American	8,266	8,248	7,959	7,631	7,542	-8.8%
American Indian	8	2	2	4	8	0.0%
Asian	97	104	82	71	65	-33.0%
Hispanic	350	441	475	509	498	42.3%
Native Hawaiian	5	5	4	5	3	-40.0%
Non-Resident Alien	77	94	76	70	53	-31.2%
Two or more races	301	334	314	260	234	-22.3%
White	798	796	705	629	591	-25.9%
No Race Reported	7	7	0	0	0	-100.0%
Total	9,909	10,031	9,617	9,179	8,994	-9.2%
<b>State of Residency</b>						
Florida	8,236	8,190	7,745	7,288	6,880	-16.5%
Out-of-State	1,673	1,841	1,872	1,891	2,114	26.4%
Total	9,909	10,031	9,617	9,179	8,994	-9.2%
<b>Age Range</b>						
17 and Under	270	241	160	180	141	-47.8%
18 - 21	5,343	5,446	5,233	4,857	4,793	-10.3%
22 - 24	2,344	2,415	2,417	2,392	2,371	1.2%
25 - 30	1,258	1,255	1,149	1,073	1,021	-18.8%
31 - 40	447	425	433	454	455	1.8%
41 - 64	240	244	220	221	208	-13.3%
65 and Over	7	5	5	2	5	-28.6%
Total	9,909	10,031	9,617	9,179	8,994	-9.2%
<b>Student Level</b>						
Undergraduate	7,554	7,724	7,499	7,082	7,000	-7.3%
Graduate	1,861	1,859	1,778	1,759	1,688	-9.3%
Unclassified	494	448	340	338	306	-38.1%
Total	9,909	10,031	9,617	9,179	8,994	-9.2%
<b>Degree Level Sought</b>						
Baccalaureate	7,076	7,276	7,141	6,821	6,764	-4.4%
Masters	668	669	609	681	678	1.5%
Doctorate	276	291	313	332	316	14.5%
Law	522	530	563	474	416	-20.3%
Pharmacy	873	817	653	533	514	-41.1%
Non-Degree Seeking	494	448	338	338	306	-38.1%
Total	9,909	10,031	9,617	9,179	8,994	-9.2%
<b>Classification</b>						
Freshmen	2,202	2,215	1,822	1,350	1,313	-40.4%
Sophomore	1,551	1,498	1,676	1,555	1,433	-7.6%
Junior	1,739	1,867	1,822	2,094	2,085	19.9%
Senior	1,766	1,940	2,177	2,083	2,169	22.8%
First Professional *	1,287	1,177	933	819	765	-40.6%

\* Professional doctoral degrees offered at FAMU for Law (JD), Pharmacy (PharmD) and Physical Therapy (DPT)

Category	Fall 2017	Fall 2018	Fall 2019	Fall 2020	Fall 2021	5-yr % Change
Graduate	870	886	847	940	923	6.1%
Unclassified	494	448	340	338	306	-38.1%
Total	9,909	10,031	9,617	9,179	8,994	-9.2%
<b>Strategic Emphasis</b>						
Education	102	99	110	128	144	41.2%
GAP Analysis	322	279	306	328	304	-5.6%
Global	14	20	19	22	19	35.7%
Health	2,363	2,291	2,225	2,078	2,049	-13.3%
STEM	1,935	2,120	2,076	2,100	2,109	9.0%
Not Program of Strategic Emphasis	5,173	5,222	4,881	4,523	4,369	-15.5%
Total	9,909	10,031	9,617	9,179	8,994	-9.2%
<b>College/School</b>						
College of Agriculture and Food Sciences	283	295	304	309	315	11.3%
College of Education	410	411	415	453	464	13.2%
FAMU-FSU College of Engineering	332	395	393	409	427	28.6%
College of Law	522	530	563	474	416	-20.3%
College of Pharmacy & Pharmaceutical Sciences, Institute of Public Health	1,028	960	809	722	698	-32.1%
College of Science and Technology	1,006	1,126	1,077	1,069	1,034	2.8%
College of Social Sciences, Arts and Humanities	2,409	2,290	2,204	2,021	1,912	-20.6%
School of Allied Health Sciences	1,154	1,210	1,297	1,223	1,238	7.3%
School of Architecture and Engineering Technology	258	250	234	243	241	-6.6%
School of Business and Industry	908	1,034	968	972	1,005	10.7%
School of Journalism and Graphic Communication	549	506	511	509	497	-9.5%
School of Nursing	462	487	407	348	343	-25.8%
School of the Environment	94	89	95	89	98	4.3%
Unclassified	494	448	340	338	306	-38.1%
Total	9,909	10,031	9,617	9,179	8,994	-9.2%

## Enrollment by Degree Program

Table 11: Enrollment by Classification of Instructional Programs

Program	Fall 2017	Fall 2018	Fall 2019	Fall 2020	Fall 2021	5-yr % Change
<b>College of Agriculture and Food Sciences</b>						
Bachelor - Agriculture, General	142	141	161	167	183	28.9%
Bachelor - Agribusiness/Agricultural Business Operations	38	34	44	48	41	7.9%
Bachelor - Food Sciences and Technology	51	60	48	49	39	-23.5%
Bachelor - Agricultural Engineering	23	30	28	22	22	-4.3%
Bachelor - Engineering, Other	6	7	6	2	3	-50.0%
Masters - Agriculture, General	21	22	16	20	25	19.0%
Doctoral - Entomology	2	1	1	1	2	0.0%
College Total	283	295	304	309	315	11.3%
<b>College of Education</b>						
Bachelor - Elementary Education and Teaching	22	19	35	31	52	136.4%
Bachelor - Secondary Education and Teaching	4	9	8	10	22	450.0%
Bachelor - Early Childhood Education and Teaching	9	4	0	0	0	-100.0%
Bachelor - English/Language Arts Teacher Education	7	0	0	0	0	-100.0%
Bachelor - Mathematics Teacher Education	9	6	3	6	7	-22.2%
Bachelor - Music Teacher Education	8	8	8	15	9	12.5%

Category	Fall 2017	Fall 2018	Fall 2019	Fall 2020	Fall 2021	5-yr % Change
Bachelor - Social Science Teacher Education	2	0	0	0	0	-100.0%
Bachelor - Health, Physical Education/Fitness	64	66	62	70	73	14.1%
Bachelor - Physical Education Teaching and Coaching	0	0	0	1	0	-100.0%
Bachelor - Pre-Elementary Education	60	55	47	67	38	-36.7%
Bachelor - Pre-English Education	10	16	14	15	15	50.0%
Bachelor - Pre-History Education	9	11	11	10	7	-22.2%
Bachelor - Pre-Music Teacher Education	48	48	60	47	40	-16.7%
Bachelor - Pre-Physical Education	11	12	10	6	6	-45.5%
Bachelor - Pre-Political Science Education	1	2	5	4	1	0.0%
Bachelor - Pre-Science Education/Biology	4	1	1	0	0	-100.0%
Bachelor - Science Teacher Education/General Science Teacher	0	0	1	0	0	-100.0%
Masters - Curriculum and Instruction	6	17	16	26	16	166.7%
Masters - Educational Leadership and Administration	15	9	4	9	11	-26.7%
Masters - Student Counseling and Personnel Services	34	36	37	38	37	8.8%
Masters - Sport Business Management	30	34	28	32	46	53.3%
Research Doctoral - Educational Leadership and Administration	57	58	65	66	84	47.4%
College Total	410	411	415	453	464	13.2%
<b>FAMU-FSU College of Engineering</b>						
Bachelor – Bioengineering and Biomedical Engineering	0	0	9	21	18	100.0%
Bachelor - Chemical Engineering	29	26	18	15	15	-48.3%
Bachelor - Civil Engineering, General	24	19	21	27	30	25.0%
Bachelor - Computer Engineering, General	24	22	22	31	33	37.5%
Bachelor - Electrical and Electronics Engineering	17	18	25	27	26	52.9%
Bachelor - Engineering, Other	137	200	181	141	159	16.1%
Bachelor - Industrial Engineering	14	17	22	26	28	100.0%
Bachelor - Mechanical Engineering	35	34	33	55	49	40.0%
Bachelor - Pre-Engineering	0	0	1	0	0	-100.0%
Masters - Bioengineering and Biomedical Engineering	1	1	1	1	1	0.0%
Masters - Chemical Engineering	1	0	3	0	5	400.0%
Masters - Civil Engineering, General	8	4	5	3	9	12.5%
Masters - Electrical and Electronics Engineering	6	3	3	2	5	-16.7%
Masters - Mechanical Engineering	1	3	1	2	8	700.0%
Masters - Systems Engineering	0	0	0	1	1	0.0%
Masters - Industrial Engineering	3	2	1	3	6	100.0%
Research Doctoral - Bioengineering and Biomedical Engineering	2	2	1	3	3	50.0%
Research Doctoral - Chemical Engineering	4	3	5	10	3	-25.0%
Research Doctoral - Civil Engineering, General	6	15	15	13	6	0.0%
Research Doctoral - Electrical and Electronics Engineering	7	10	11	9	8	14.3%
Research Doctoral - Mechanical Engineering	5	8	7	8	6	20.0%
Research Doctoral - Industrial Engineering	8	8	8	11	8	0.0%
College Total	332	395	393	409	427	28.6%
<b>College of Law</b>						
Law	522	530	563	474	416	-20.3%
College Total	522	530	563	474	416	-20.3%
<b>College of Pharmacy &amp; Pharmaceutical Sciences, Institute of Public Health</b>						
Bachelor - Pharmacy, Pharmaceutical Sciences, and Administration	7	9	18	24	22	214.3%
Bachelor - Pre-Pharmacy	0	1	2	3	0	-100.0%
Masters - Pharmacy, Pharmaceutical Sciences, and Administration	3	7	7	6	9	200.0%

Category	Fall 2017	Fall 2018	Fall 2019	Fall 2020	Fall 2021	5-yr % Change
Masters - Public Health, General	69	55	51	67	75	8.7%
Research Doctoral - Pharmacy, Pharmaceutical Sciences, & Administration	37	36	36	41	31	-16.2%
Research Doctoral - Public Health, General	39	35	42	48	47	20.5%
First Professional - Pharmacy	873	817	653	533	514	-41.1%
College Total	1,028	960	809	722	698	-32.1%
<b>College of Science and Technology</b>						
Bachelor - Computer and Information Sciences, General	121	142	139	141	159	31.4%
Bachelor - Computer and Information Sciences, Other	3	5	1	0	0	-100.0%
Bachelor - Information Technology	127	124	130	119	90	-29.1%
Bachelor - Cybersecurity	0	0	0	1	0	-100.0%
Bachelor - Biology/Biological Sciences	579	658	638	634	611	5.5%
Bachelor - Mathematics, General	26	23	28	27	26	0.0%
Bachelor - Chemistry, General	81	104	88	89	93	14.8%
Bachelor - Physics, General	10	10	11	7	8	-20.0%
Masters - Computer and Information Sciences	16	13	12	18	19	18.8%
Masters - Biology/Biological Sciences, General	17	20	10	11	11	-35.3%
Masters - Chemistry, General	9	9	5	6	4	-55.6%
Masters - Physics, General	3	3	2	2	3	0.0%
Research Doctoral - Physics, General	14	15	13	14	10	-28.6%
College Total	1,006	1,126	1,077	1,069	1,034	2.8%
<b>College of Social Sciences, Arts and Humanities</b>						
Bachelor - African American/Black Studies	14	20	19	22	19	35.7%
Bachelor - English Language and Literature, General	39	48	43	35	41	5.1%
Bachelor - English/Language Arts Teacher Education	0	0	1	0	0	-100.0%
Bachelor - General Studies	222	225	127	133	76	-65.8%
Bachelor - History, General	23	22	25	19	16	-30.4%
Bachelor - Interdisciplinary Studies	409	259	217	136	127	-68.9%
Bachelor - Philosophy and Religious Studies, Other	16	11	14	13	11	-31.3%
Bachelor - Psychology, General	382	377	429	491	513	34.3%
Bachelor - Criminal Justice/Safety Studies	448	452	463	408	382	-14.7%
Bachelor - Social Work	143	117	141	141	134	-6.3%
Bachelor - Political Science and Government, General	210	209	215	200	205	-2.4%
Bachelor - Sociology	92	81	80	64	65	-29.3%
Bachelor - Drama and Dramatics/Theatre Arts	66	66	67	48	55	-16.7%
Bachelor - Fine/Studio Arts, General	17	18	16	18	22	29.4%
Bachelor - Music, General	109	123	122	99	91	-16.5%
Bachelor - Music Teacher Education	1	0	1	1	1	0.0%
Bachelor - Pre-Political Science Education	0	0	1	0	0	-100.0%
Bachelor - Pre-Social Work	85	118	69	30	17	-80.0%
Masters - Community Psychology	33	37	40	35	35	6.1%
Masters - Social Work	39	53	52	74	55	41.0%
Masters - Social Sciences, General	61	54	62	54	47	-23.0%
College Total	2,409	2,290	2,204	2,021	1,912	-20.6%
<b>School of Allied Health Sciences</b>						
Bachelor - Health Services/Allied Health/Health Sciences	699	789	895	830	873	24.9%
Bachelor - Health/Health Care Administration/Management	102	106	120	110	99	-2.9%
Bachelor - Health Information/Medical Records Administration	57	40	44	40	26	-54.4%
Bachelor - Respiratory Care Therapy/Therapist	34	29	28	43	36	5.9%
Bachelor - Pre-Cardiopulmonary Science	42	49	45	36	45	7.1%
Bachelor - Pre-Health Care	45	34	4	0	0	-100.0%

Category	Fall 2017	Fall 2018	Fall 2019	Fall 2020	Fall 2021	5-yr % Change
Bachelor - Pre-Health Information Mgmt	6	5	1	0	0	-100.0%
Masters - Health/Health Care Administration/Management	19	21	22	32	24	26.3%
Masters - Occupational Therapy/Therapist	75	63	63	59	64	-14.7%
Doctor of Physical Therapy - Physical Therapy/Therapist	75	74	75	73	71	-5.3%
School Total	1,154	1,210	1,297	1,223	1,238	7.3%
<b>School of Architecture and Engineering Technology</b>						
Bachelor - Architecture	105	117	134	143	143	36.2%
Bachelor - Electrical, Electronic and Communications Engineering	29	23	26	27	30	3.4%
Bachelor - Construction Engineering Technology	75	69	50	48	43	-42.7%
Masters - Architecture	49	41	24	25	25	-49.0%
School Total	258	250	234	243	241	-6.6%
<b>School of Business and Industry</b>						
Bachelor - Economics, General	43	54	47	47	47	9.3%
Bachelor - Business Administration and Management	637	719	655	347	360	-43.5%
Bachelor - Logistics, Material, and Supply Chain Management	2	4	14	20	29	1350.0%
Bachelor - Accounting	63	52	72	84	68	7.9%
Bachelor - Pre-Accounting	40	70	64	341	395	887.5%
Masters - Business Administration and Management	123	135	113	124	100	-18.7%
Masters - Logistics, Material, and Supply Chain Management	0	0	3	9	6	100.0%
School Total	908	1,034	968	972	1,005	10.7%
<b>School of Journalism and Graphic Communication</b>						
Bachelor - Journalism	214	170	167	177	165	-22.9%
Bachelor - Public Relations/Image Management	177	137	129	130	122	-31.1%
Bachelor - Graphic Design	82	90	105	114	114	39.0%
Bachelor - Pre-Journalism	76	109	110	88	96	26.3%
School Total	549	506	511	509	497	-9.5%
<b>School of Nursing</b>						
Bachelor - Pre-Nursing	188	277	236	176	185	-1.6%
Bachelor - Registered Nurse	259	191	152	157	141	-45.6%
Masters - Registered Nurse	15	19	19	15	17	13.3%
School Total	462	487	407	348	343	-25.8%
<b>School of the Environment</b>						
Bachelor - Environmental Studies	29	26	30	21	24	-17.2%
Bachelor - Environmental Science	34	29	22	26	23	-32.4%
Masters - Environmental Science	11	8	9	7	14	27.3%
Research Doctoral - Environmental Science	20	26	34	35	37	85.0%
School Total	94	89	95	89	98	4.3%
<b>Unclassified</b>	494	448	340	338	306	-38.1%
<b>University Grand Total</b>	<b>9,909</b>	<b>10,031</b>	<b>9,617</b>	<b>9,179</b>	<b>8,994</b>	<b>-9.2%</b>

## Enrollment by State of Residence

Figure 4: Fall 2021 Enrollment by State of Residence

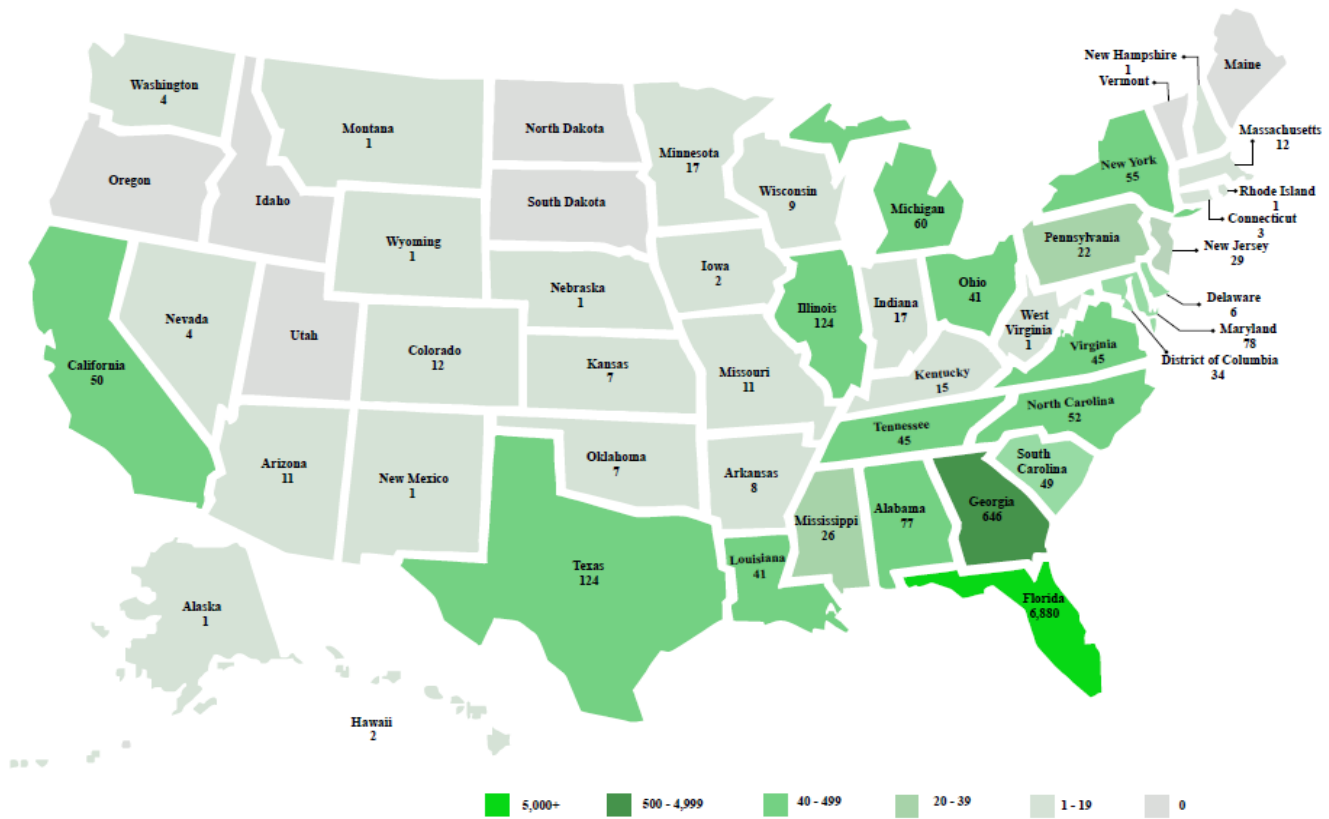


Table 12: Enrollment by State of Residence

State	Fall 2017	Fall 2018	Fall 2019	Fall 2020	Fall 2021	5-yr % Change
Alabama	81	76	80	63	77	-4.9%
Alaska	0	0	0	1	1	0.0%
Arizona	6	7	9	9	11	83.3%
Arkansas	9	9	9	6	8	-11.1%
California	38	46	49	41	50	31.6%
Colorado	15	16	13	12	12	-20.0%
Connecticut	1	4	3	2	3	200.0%
Delaware	7	5	6	5	6	-14.3%
Florida	8,236	8,190	7,747	7,288	6,880	-16.5%
Georgia	466	521	568	581	646	38.6%
Hawaii	1	1	0	1	2	100.0%
Idaho	1	1	0	0	0	-100.0%
Illinois	97	106	116	109	124	27.8%
Indiana	16	16	16	18	17	6.3%
Iowa	2	3	4	3	2	0.0%
Kansas	4	3	3	2	7	75.0%
Kentucky	8	12	13	11	15	87.5%
Louisiana	33	35	37	30	41	24.2%
Maine	1	0	0	0	0	-100.0%
Maryland	54	63	68	73	78	44.4%



State	Fall 2017	Fall 2018	Fall 2019	Fall 2020	Fall 2021	5-yr % Change
Massachusetts	7	9	12	11	12	71.4%
Michigan	72	74	76	60	60	-16.7%
Minnesota	12	10	8	10	17	41.7%
Mississippi	17	23	22	21	26	52.9%
Missouri	18	16	16	14	11	-38.9%
Montana	0	2	2	1	1	-50.0%
Nebraska	1	0	3	1	1	0.0%
Nevada	5	6	5	3	4	-20.0%
New Hampshire	3	1	3	1	1	-66.7%
New Jersey	25	23	22	28	29	16.0%
New Mexico	0	0	0	1	1	0.0%
New York	39	41	46	60	55	41.0%
North Carolina	44	49	47	58	52	18.2%
North Dakota	0	0	0	0	0	0.0%
Ohio	31	36	35	32	41	32.3%
Oklahoma	3	4	6	6	7	133.3%
Oregon	1	0	0	0	0	-100.0%
Pennsylvania	16	25	24	21	22	37.5%
Rhode Island	1	1	1	1	1	0.0%
South Carolina	39	36	40	39	49	25.6%
South Dakota	1	1	1	1	0	-100.0%
Tennessee	38	38	37	36	45	18.4%
Texas	77	99	104	108	124	61.0%
Utah	0	1	1	1	0	-100.0%
Vermont	0	0	0	0	0	0.0%
Virginia	32	30	34	32	45	40.6%
Washington	6	7	6	5	4	-33.3%
Washington District of Columbia	23	35	29	30	34	47.8%
West Virginia	0	0	0	0	1	0.0%
Wisconsin	11	11	9	9	9	-18.2%
Wyoming	1	2	2	2	1	0.0%
Unknown	167	164	142	185	217	29.9%
<b>Total USA</b>	<b>9,766</b>	<b>9,858</b>	<b>9,474</b>	<b>9,032</b>	<b>8,850</b>	<b>-9.4%</b>
<b>Foreign Countries</b>	<b>143</b>	<b>173</b>	<b>143</b>	<b>147</b>	<b>144</b>	<b>0.7%</b>
<b>Grand Total</b>	<b>9,909</b>	<b>10,031</b>	<b>9,617</b>	<b>9,179</b>	<b>8,994</b>	<b>-9.2%</b>

Table 13: Enrollment by Foreign Countries

State	Fall 2017	Fall 2018	Fall 2019	Fall 2020	Fall 2021	5-yr % Change
Anguilla	0	0	1	1	1	0.0%
Antigua And Barbuda	0	0	1	1	1	0.0%
Argentine Republic	3	2	1	1	1	-66.7%
The Commonwealth Of The Bahamas	24	21	12	8	8	-66.7%
People's Republic Of Bangladesh	2	2	0	1	1	-50.0%
Barbados	0	0	1	1	1	0.0%
Republic Of Bolivia	0	0	0	0	1	0.0%
Federative Republic Of Brazil	0	1	1	1	0	-100.0%
Republic Of Bulgaria	2	2	2	1	1	-50.0%
Republic Of Cameroon	0	0	0	0	1	0.0%
Canada	1	2	2	1	0	-100.0%
People's Republic Of China	1	0	1	1	1	0.0%
Republic Of Colombia	1	1	0	1	3	200.0%

State	Fall 2017	Fall 2018	Fall 2019	Fall 2020	Fall 2021	5-yr % Change
Czech Republic	0	0	1	0	0	-100.0%
Commonwealth Of Dominica	0	0	1	2	2	100.0%
Dominican Republic	2	2	1	0	0	-100.0%
Republic Of El Salvador	0	1	0	0	0	-100.0%
State Of Eritrea	0	0	0	1	1	0.0%
Republic Of Ethiopia	1	1	2	3	2	100.0%
French Republic	2	2	4	0	2	0.0%
Federal Republic Of Germany	2	1	0	0	2	0.0%
Republic Of Ghana	10	28	11	22	16	60.0%
Co-operative Republic Of Guyana	0	0	0	1	1	0.0%
Republic Of Haiti	1	3	2	2	5	400.0%
Republic Of India	7	5	7	7	6	-14.3%
Islamic Republic Of Iran	0	1	0	1	1	0.0%
State Of Israel	1	0	0	0	0	-100.0%
Jamaica	14	11	9	10	10	-28.6%
Republic Of Kenya	10	7	2	1	3	-70.0%
Republic Of Korea	0	0	0	0	1	0.0%
Nepal	0	0	1	1	1	0.0%
Netherlands Antilles	7	9	7	6	3	-57.1%
Kingdom Of The Netherlands	1	1	3	2	4	300.0%
Federal Republic Of Nigeria	26	36	30	27	24	-7.7%
Republic Of Pakistan	0	0	1	2	3	200.0%
Republic Of Panama	1	1	1	0	0	-100.0%
Republic Of Peru	4	2	0	0	0	-100.0%
Republic Of The Philippines	0	0	0	1	1	0.0%
Commonwealth Of Puerto Rico	0	1	2	1	1	0.0%
Kingdom Of Saudi Arabia	7	19	25	31	28	300.0%
Kingdom Of Spain	0	0	1	0	0	-100.0%
Syrian Arab Republic	0	0	0	1	1	0.0%
United Republic Of Tanzania	1	1	0	0	0	-100.0%
Republic Of Trinidad And Tobago	2	2	3	3	2	0.0%
Togolese Republic	1	0	0	0	0	-100.0%
Republic Of Turkey	3	4	3	3	2	-33.3%
Turks And Caicos Islands	1	1	1	0	0	-100.0%
Ukraine	1	1	0	0	0	-100.0%
United Kingdom Of Great Britain And Northern Ireland	1	1	1	0	0	-100.0%
Socialist Republic Of Vietnam	0	0	0	0	1	0.0%
Republic Of Yemen	0	0	1	1	1	0.0%
Republic Of Zambia	2	0	0	0	0	-100.0%
Republic Of Zimbabwe	1	1	1	0	0	-100.0%
<b>Total Foreign Countries</b>	<b>143</b>	<b>173</b>	<b>143</b>	<b>147</b>	<b>144</b>	<b>0.7%</b>

## Enrollment by Florida County of Residence

Figure 5: Fall 2021 Enrollment by Florida County of Residence

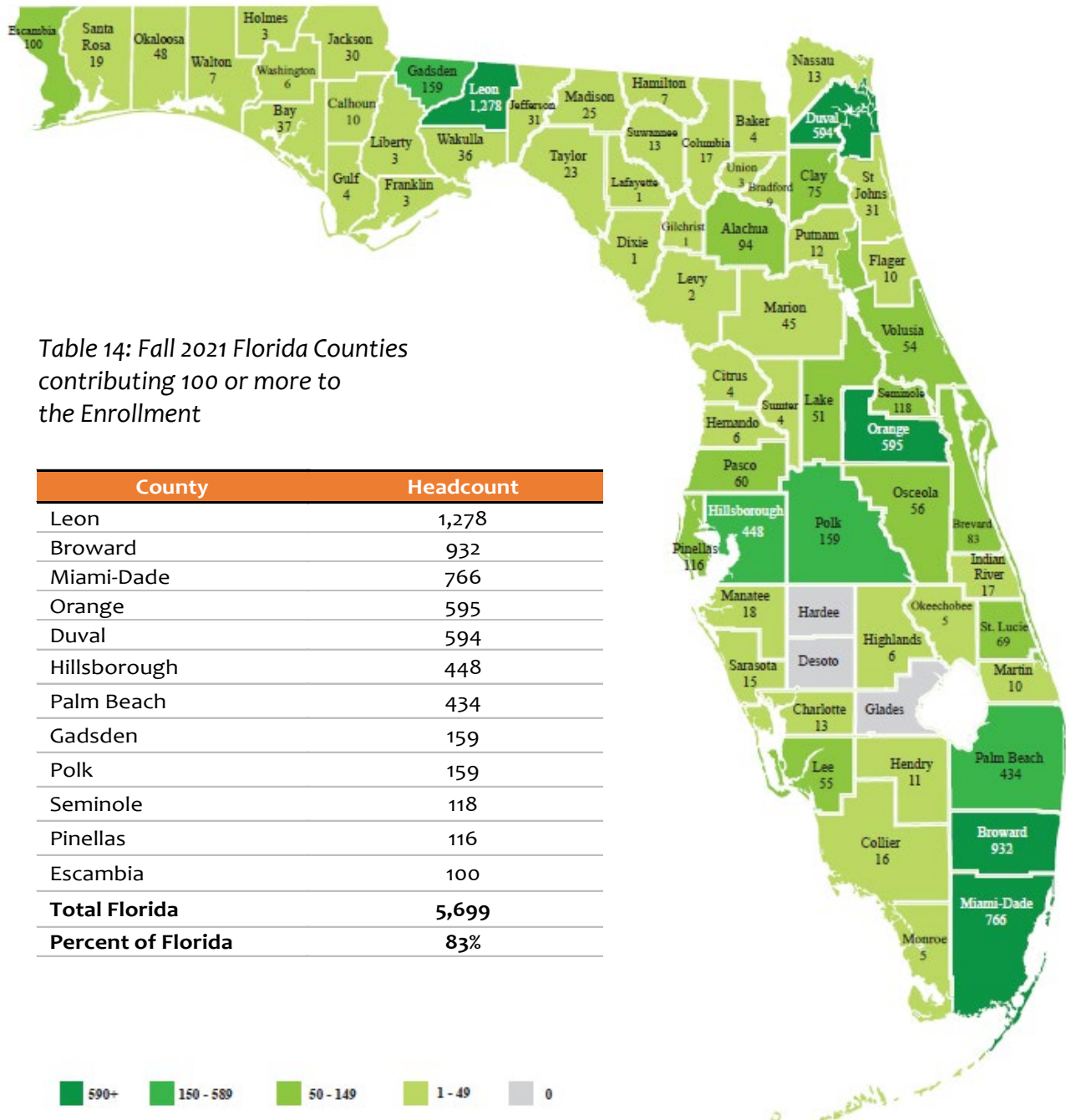


Table 15: Enrollment by Florida County of Residence

County	Fall 2017	Fall 2018	Fall 2019	Fall 2020	Fall 2021	5-yr % Change
Alachua	119	111	100	106	94	-21.0%
Baker	11	11	10	8	4	-63.6%
Bay	54	52	39	44	37	-31.5%
Bradford	2	7	8	8	9	350.0%
Brevard	115	112	101	83	83	-27.8%
Broward	1,054	1,069	1,050	991	932	-11.6%
Calhoun	4	4	3	8	10	150.0%
Charlotte	3	4	4	7	13	333.3%
Citrus	2	1	1	3	4	100.0%
Clay	65	61	84	74	75	15.4%
Collier	14	15	10	14	16	14.3%
Columbia	9	16	16	20	17	88.9%
Desoto	6	2	0	0	0	-100.0%
Dixie	1	1	1	1	1	0.0%
Duval	726	714	642	620	594	-18.2%
Escambia	132	118	110	92	100	-24.2%
Flagler	12	10	10	7	10	-16.7%
Franklin	7	7	5	5	3	-57.1%
Gadsden	188	185	167	167	159	-15.4%
Gilchrist	0	0	0	2	1	-50.0%
Glades	2	1	1	1	0	-100.0%
Gulf	8	5	4	7	4	-50.0%
Hamilton	3	6	4	5	7	133.3%
Hardee	0	1	0	1	0	-100.0%
Hendry	4	11	9	8	11	175.0%
Hernando	15	16	14	8	6	-60.0%
Highlands	18	15	9	8	6	-66.7%
Hillsborough	410	463	480	453	448	9.3%
Holmes	11	6	8	7	3	-72.7%
Indian River	16	16	16	17	17	6.3%
Jackson	39	32	32	32	30	-23.1%
Jefferson	44	39	34	32	31	-29.5%
Lafayette	0	0	0	1	1	0.0%
Lake	58	67	65	57	51	-12.1%
Lee	79	79	68	59	55	-30.4%
Leon	1,625	1,566	1,424	1,401	1,278	-21.4%
Levy	2	2	0	0	2	0.0%
Liberty	4	7	6	5	3	-25.0%
Madison	27	28	29	30	25	-7.4%
Manatee	53	40	22	17	18	-66.0%
Marion	62	55	42	36	45	-27.4%
Martin	14	14	8	10	10	-28.6%
Miami-Dade	990	1,019	980	817	766	-22.6%
Monroe	8	6	9	10	5	-37.5%
Nassau	8	11	13	11	13	62.5%
Okaloosa	45	47	42	46	48	6.7%
Okeechobee	5	3	4	4	5	0.0%
Orange	664	650	630	638	595	-10.4%
Osceola	68	66	66	51	56	-17.6%
Palm Beach	475	481	480	438	434	-8.6%
Pasco	57	60	68	66	60	5.3%
Pinellas	185	174	165	145	116	-37.3%

County	Fall 2017	Fall 2018	Fall 2019	Fall 2020	Fall 2021	5-yr % Change
Polk	197	183	165	154	159	-19.3%
Putnam	14	20	12	9	12	-14.3%
Santa Rosa	32	30	29	26	19	-40.6%
Sarasota	31	23	26	22	15	-51.6%
Seminole	128	136	130	129	118	-7.8%
St. Johns	17	27	32	30	31	82.4%
St. Lucie	94	92	91	81	69	-26.6%
Sumter	8	6	4	3	4	-50.0%
Suwannee	7	9	10	8	13	85.7%
Taylor	17	26	23	23	23	35.3%
Union	2	2	2	1	3	50.0%
Volusia	96	88	69	64	54	-43.8%
Wakulla	37	34	36	34	36	-2.7%
Walton	21	18	18	14	7	-66.7%
Washington	12	10	7	9	6	-50.0%
<b>Total Florida Counties</b>	<b>8,236</b>	<b>8,190</b>	<b>7,747</b>	<b>7,288</b>	<b>6,880</b>	<b>-16.5%</b>

# Undergraduate Enrollment Overview

Figure 6: Fall 2021 Undergraduate Enrollment Overview

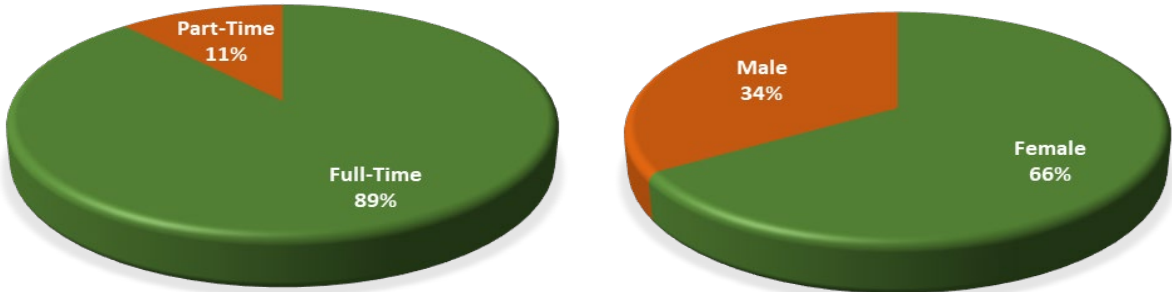


Table 16: Undergraduate Enrollment

Program	Fall 2017	Fall 2018	Fall 2019	Fall 2020	Fall 2021	5-yr % Change
<b>Gender</b>						
Female	4,927	5,016	4,910	4,659	4,623	-6.2%
Male	2,627	2,708	2,589	2,423	2,377	-9.5%
Total	7,554	7,724	7,499	7,082	7,000	-7.3%
<b>Course Load</b>						
Full-Time	6,861	6,939	6,789	6,233	6,196	-9.7%
Part-Time	693	785	710	849	804	16.0%
Total	7,554	7,724	7,499	7,082	7,000	-7.3%
<b>Ethnicity</b>						
African American	6,756	6,819	6,636	6,277	6,247	-7.5%
American Indian	4	1	2	4	5	25.0%
Asian	31	39	38	33	26	-16.1%
Hispanic	204	281	315	333	333	63.2%
Native Hawaiian	0	0	0	0	0	0.0%
Non-Resident Alien	49	41	28	22	15	-69.4%
Two or more races	265	296	252	205	180	-32.1%
White	245	247	228	208	194	-20.8%
No Race Reported	0	0	0	0	0	0.0%
Total	7,554	7,724	7,499	7,082	7,000	-7.3%
<b>State of Residency</b>						
Florida	6,431	6,480	6,187	5,781	5,461	-15.1%
Out-of-State	1,123	1,244	1,312	1,301	1,539	37.0%
Total	7,554	7,724	7,499	7,082	7,000	-7.3%
<b>Age Range</b>						
17 and Under	28	23	19	18	14	-50.0%
18 – 21	5,130	5,268	5,082	4,715	4,653	-9.3%
22 – 24	1,731	1,784	1,793	1,767	1,770	2.3%
25 – 30	459	451	413	386	380	-17.2%
31 – 40	126	116	118	121	122	-3.2%
41 – 64	79	81	73	73	60	-24.1%
65 and Over	1	1	1	2	1	0.0%
Total	7,554	7,724	7,499	7,082	7,000	-7.3%

Program	Fall 2017	Fall 2018	Fall 2019	Fall 2020	Fall 2021	5-yr % Change
<b>Degree Level Sought</b>						
Baccalaureate	7,076	7,276	7,139	6,821	6,764	-4.4%
Pharmacy	478	448	360	261	236	-50.6%
Total	7,554	7,724	7,499	7,082	7,000	-7.3%
<b>Classification</b>						
Freshmen	2,202	2,215	1,822	1,350	1,313	-40.4%
Sophomore	1,551	1,498	1,676	1,555	1,433	-7.6%
Junior	1,739	1,867	1,822	2,094	2,085	19.9%
Senior	1,766	1,940	2,177	2,083	2,169	22.8%
First Professional	296	204	2	0	0	-100.0%
Total	7,554	7,724	7,499	7,082	7,000	-7.3%
<b>Strategic Emphasis</b>						
Education	62	46	57	64	91	46.8%
GAP Analysis	322	279	306	328	304	-5.6%
Global	14	20	19	22	19	35.7%
Health	1,636	1,612	1,617	1,465	1,433	-12.4%
STEM	1,720	1,903	1,885	1,886	1,884	9.5%
Not Program of Strategic Emphasis	3,800	3,864	3,615	3,317	3,269	-14.0%
Total	7,554	7,724	7,499	7,082	7,000	-7.3%
<b>College/School</b>						
College of Agriculture and Food Sciences	260	272	287	288	288	10.8%
College of Education	268	257	265	282	270	0.7%
FAMU-FSU College of Engineering	280	336	332	343	358	27.9%
College of Pharmacy & Pharmaceutical Sciences, Institute of Public Health	485	458	380	288	258	-46.8%
College of Science and Technology	947	1,066	1,035	1,018	987	4.2%
College of Social Sciences, Arts and Humanities	2,276	2,146	2,050	1,858	1,775	-22.0%
School of Allied Health Sciences	985	1,052	1,137	1,059	1,079	9.5%
School of Architecture and Engineering Technology	209	209	210	218	216	3.3%
School of Business and Industry	785	899	852	839	899	14.5%
School of Journalism and Graphic Communication	549	506	511	509	497	-9.5%
School of Nursing	447	468	388	333	326	-27.1%
School of the Environment	63	55	52	47	47	-25.4%
Total	7,554	7,724	7,499	7,082	7,000	-7.3%

# Graduate Enrollment Overview

Figure 7: Fall 2021 Graduate Enrollment Overview

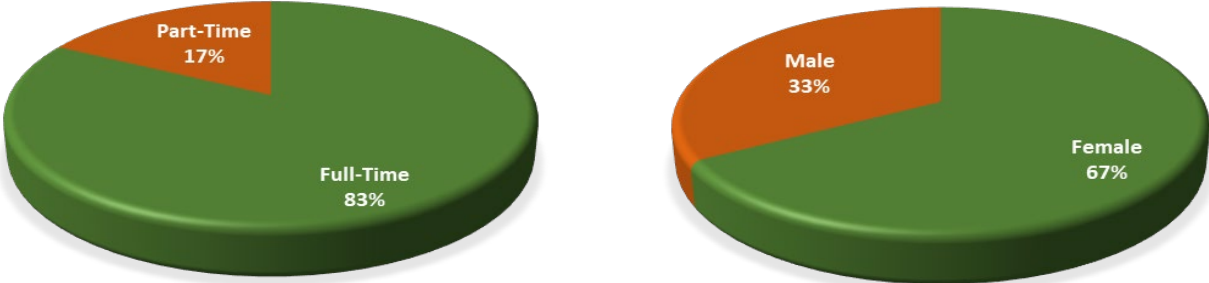


Table 17: Graduate Enrollment

Program	Fall 2017	Fall 2018	Fall 2019	Fall 2020	Fall 2021	5-yr % Change
<b>Gender</b>						
Female	1,207	1,184	1,149	1,166	1,126	-6.7%
Male	654	675	629	593	562	-14.1%
Total	1,861	1,859	1,778	1,759	1,688	-9.3%
<b>Course Load</b>						
Full-Time	1,631	1,624	1,568	1,487	1,399	-14.2%
Part-Time	230	235	210	272	289	25.7%
Total	1,861	1,859	1,778	1,759	1,688	-9.3%
<b>Ethnicity</b>						
African American	1,341	1,277	1,200	1,226	1,190	-11.3%
American Indian	1	1	0	0	0	-100.0%
Asian	54	52	38	30	33	-38.9%
Hispanic	127	138	142	153	148	16.5%
Native Hawaiian	4	4	2	2	0	-100.0%
Non-Resident Alien	23	48	47	48	35	52.2%
Two or more races	31	35	57	54	50	61.3%
White	274	301	292	246	232	-15.3%
No Race Reported	6	3	0	0	0	-100.0%
Total	1,861	1,859	1,778	1,759	1,688	-9.3%
<b>State of Residency</b>						
Florida	1,349	1,301	1,239	1,189	1,171	-13.2%
Out-of-State	512	558	539	570	517	1.0%
Total	1,861	1,859	1,778	1,759	1,688	-9.3%
<b>Age Range</b>						
17 and Under	0	0	0	0	0	0.0%
18 - 21	36	31	24	26	18	-50.0%
22 - 24	588	609	601	609	565	-3.9%
25 - 30	777	773	718	669	632	-18.7%
31 - 40	308	294	297	315	327	6.2%
41 - 64	149	151	136	140	143	-4.0%
65 and Over	3	1	2	0	3	0.0%
Total	1,861	1,859	1,778	1,759	1,688	-9.3%



Program	Fall 2017	Fall 2018	Fall 2019	Fall 2020	Fall 2021	5-yr % Change
<b>Degree Level Sought</b>						
Masters	668	669	609	681	678	1.5%
Doctorate	276	291	313	332	316	14.5%
Law	522	530	563	474	416	-20.3%
Pharmacy	395	369	293	272	278	-29.6%
Total	1,861	1,859	1,778	1,759	1,688	-9.3%
<b>Classification</b>						
First Professional	991	973	931	819	765	-22.8%
Graduate	870	886	847	940	923	6.1%
Total	1,861	1,859	1,778	1,759	1,688	-9.3%
<b>Strategic Emphasis</b>						
Education	40	53	53	64	53	32.5%
Health	727	679	608	613	616	-15.3%
STEM	214	217	190	214	225	5.1%
Not Program of Strategic Emphasis	880	910	927	868	794	-9.8%
Total	1,861	1,859	1,778	1,759	1,688	-9.3%
<b>College/School</b>						
College of Agriculture and Food Sciences	23	23	17	21	27	17.4%
College of Education	142	154	150	171	194	36.6%
FAMU-FSU College of Engineering	52	59	61	66	69	32.7%
College of Law	522	530	563	474	416	-20.3%
College of Pharmacy & Pharmaceutical Sciences, Institute of Public Health	543	502	429	434	440	-19.0%
College of Science and Technology	59	60	42	51	47	-20.3%
College of Social Sciences, Arts and Humanities	133	144	154	163	137	3.0%
School of Allied Health Sciences	169	158	160	164	159	-5.9%
School of Architecture and Engineering Technology	49	41	24	25	25	-49.0%
School of Business and Industry	123	135	116	133	106	-13.8%
School of Nursing	15	19	19	15	17	13.3%
School of the Environment	31	34	43	42	51	64.5%
Total	1,861	1,859	1,778	1,759	1,688	-9.3%

## Unclassified Enrollment Overview

Figure 8: Fall 2021 Unclassified Enrollment Overview

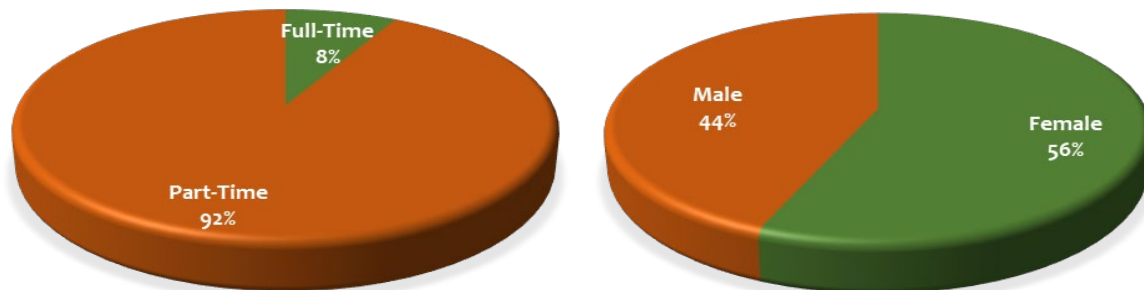


Table 18: Unclassified Enrollment

Program	Fall 2017	Fall 2018	Fall 2019	Fall 2020	Fall 2021	5-yr % Change
<b>Gender</b>						
Female	294	265	190	193	172	-41.5%
Male	200	183	150	145	134	-33.0%
Total	494	448	340	338	306	-38.1%
<b>Course Load</b>						
Full-Time	29	28	18	17	24	-17.2%
Part-Time	465	420	322	321	282	-39.4%
Total	494	448	340	338	306	-38.1%
<b>Ethnicity</b>						
African American	169	152	123	128	105	-37.9%
American Indian	3	0	0	0	3	0.0%
Asian	12	13	6	8	6	-50.0%
Hispanic	19	22	18	23	17	-10.5%
Native Hawaiian	1	1	2	3	3	200.0%
Non-Resident Alien	5	5	1	0	3	-40.0%
Two or more races	5	3	5	1	4	-20.0%
White	279	248	185	175	165	-40.9%
No Race Reported	1	4	0	0	0	-100.0%
Total	494	448	340	338	306	-38.1%
<b>State of Residency</b>						
Florida	456	409	319	318	248	-45.6%
Out-of-State	38	39	21	20	58	52.6%
Total	494	448	340	338	306	-38.1%
<b>Age Range</b>						
17 and Under	242	218	141	162	127	-47.5%
18 - 21	177	147	127	116	122	-31.1%
22 - 24	25	22	23	16	36	44.0%
25 - 30	22	31	18	18	9	-59.1%
31 - 40	13	15	18	18	6	-53.8%
41 - 64	12	12	11	8	5	-58.3%
65 and Over	3	3	2	0	1	-66.7%
Total	494	448	340	338	306	-38.1%

Program	Fall 2017	Fall 2018	Fall 2019	Fall 2020	Fall 2021	5-yr % Change
<b>Non-Degree Seeking</b>						
Undergraduate	30	25	31	20	40	33.3%
Graduate	37	34	38	35	16	-56.8%
Teacher Certification	1	3	2	1	0	-100.0%
High School Dual Enrolled	354	317	222	241	196	-44.6%
Community College Dual Enrolled	3	3	6	4	0	-100.0%
Transient	0	1	4	0	1	0.0%
International Exchange Program Undergraduate	10	23	4	5	16	60.0%
International Exchange Program Graduate	0	1	0	1	1	0.0%
FAMU-FSU Coop	59	41	33	31	36	-39.0%
<b>Total</b>	<b>494</b>	<b>448</b>	<b>340</b>	<b>338</b>	<b>306</b>	<b>-38.1%</b>

## First Time in College Enrollment Overview

Figure 9: First Time in College Enrollment Overview

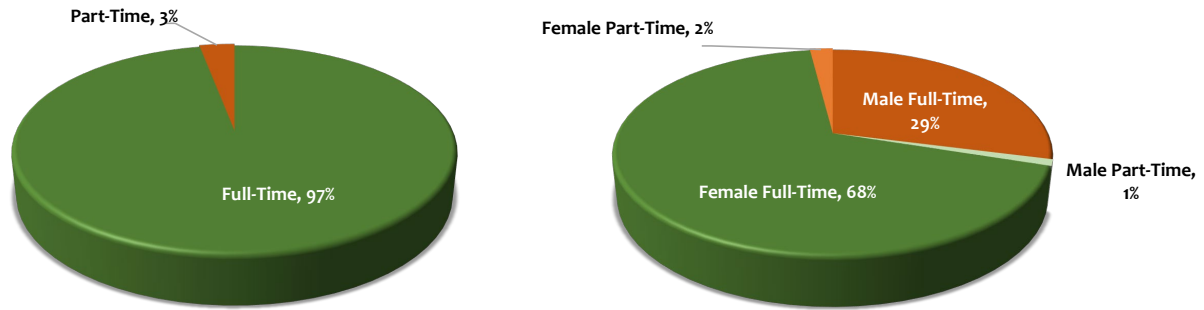


Table 19: First Time in College Enrollment

	Fall 2017		Fall 2018		Fall 2019		Fall 2020		Fall 2021		5-yr % Change	
	Full	Part	Full	Part	Full	Part	Full	Part	Full	Part	Full	Part
<b>FTIC</b>	1,607	30	1,417	51	1,338	24	1,000	41	1,140	30	-29.1%	0.0%
<b>Gender</b>												
Female	1,045	19	925	33	913	14	670	27	799	22	-23.5%	15.8%
Male	562	11	492	18	425	10	330	14	341	8	-39.3%	-27.3%
Total	1,607	30	1,417	51	1,338	24	1,000	41	1,140	30	-29.1%	0.0%
<b>Ethnicity</b>												
African American	1,430	28	1,237	43	1,190	21	886	37	1,040	27	-27.3%	-3.6%
American Indian	0	0	0	0	0	1	1	0	0	0	-100.0%	-100.0%
Asian	4	0	12	0	2	0	2	1	4	0	0.0%	-100.0%
Hispanic	71	1	89	5	80	2	63	3	53	1	-25.4%	0.0%
Native Hawaiian	0	0	0	0	0	0	0	0	0	0	0.0%	0.0%
Non-Resident Alien	11	0	1	0	3	0	0	0	1	1	-90.9%	0.0%
Two or more races	53	0	49	2	41	0	33	0	14	0	-73.6%	-100.0%
White	38	1	29	1	22	0	15	0	28	1	-26.3%	0.0%
Total	1,607	30	1,417	51	1,338	24	1,000	41	1,140	30	-29.1%	0.0%
<b>Residency</b>												
In-State	1,360	27	1,135	47	1,028	23	758	37	780	17	-42.6%	-37.0%
Out-of-State	247	3	282	4	310	1	242	4	360	13	45.7%	333.3%
Total	1,607	30	1,417	51	1,338	24	1,000	41	1,140	30	-29.1%	0.0%
<b>Strategic Emphasis</b>												
Education	6	0	7	0	8	0	2	0	2	0	-66.7%	0.0%
GAP Analysis	28	1	20	1	22	1	14	2	12	1	-57.1%	0.0%
Global	3	0	2	0	4	0	2	0	1	0	-66.7%	0.0%
Health	264	2	207	14	187	4	128	5	166	3	-37.1%	50.0%
STEM	403	4	398	12	393	7	297	14	339	12	-15.9%	200.0%
Non-PSE	903	23	783	24	724	12	557	20	620	14	-31.3%	-39.1%
Total	1,607	30	1,417	51	1,338	24	1,000	41	1,140	30	-29.1%	0.0%
<b>College/School</b>												
College of Agriculture and Food Sciences	57	0	50	1	51	1	46	1	52	2	-8.8%	100.0%
College of Education	64	0	40	1	57	2	21	0	28	0	-56.3%	-100.0%
FAMU-FSU College of Engineering	92	1	99	5	109	2	80	4	81	2	-12.0%	100.0%
College of Pharmacy & Pharmaceutical Sciences, Institute of Public Health	109	0	91	3	67	1	51	4	63	2	-42.2%	-33.3%
College of Science and Technology	213	3	228	2	205	2	154	5	178	8	-16.4%	166.7%
College of Social Sciences, Arts and Humanities	419	16	334	12	298	8	264	11	252	7	-39.9%	-56.3%
School of Allied Health Sciences	181	2	136	12	126	3	80	2	112	1	-38.1%	-50.0%
School of Architecture and Engineering Technology	37	0	20	4	30	2	15	4	24	1	-35.1%	-75.0%
School of Business and Industry	211	6	214	6	169	0	134	2	181	4	-14.2%	-33.3%
School of Journalism and Graphic Communication	90	1	75	2	85	3	49	3	59	1	-34.4%	0.0%
School of Nursing	123	0	125	3	133	0	98	5	105	2	-14.6%	-33.3%
School of the Environment	11	0	5	0	8	0	8	0	5	0	-54.5%	0.0%
Unclassified	0	1	0	0	0	0	0	0	0	0	0.0%	-100.0%
Total	1,607	30	1,417	51	1,338	24	1,000	41	1,140	30	-29.1%	0.0%

Table 20: Fall 2021 First Time in College Enrollment by Top 30 Florida High Schools

High School	City	Fall 2017	Fall 2018	Fall 2019	Fall 2020	Fall 2021	5-yr % Change
Blanche Ely High School	Pompano Beach	45	21	17	18	22	-51.1%
James Rickards High School	Tallahassee	13	20	13	7	14	7.7%
Maynard Evans High School	Orlando	0	0	0	0	14	0.0%
Lincoln High School	Tallahassee	31	21	9	13	13	-58.1%
Paxon School For Advanced Studies	Jacksonville	17	17	17	17	12	-29.4%
Robert E. Lee High School	Jacksonville	21	15	10	9	12	-42.9%
Tampa Bay Tech High School	Tampa	13	17	19	11	11	-15.4%
American Senior High School	Hialeah	13	13	9	7	10	-23.1%
Miami Northwestern Senior High	Miami	0	0	0	0	10	0.0%
Nova High School	Davie	10	11	12	11	10	0.0%
Ocoee High School	Ocoee	12	8	8	14	10	-16.7%
Sandalwood High School	Jacksonville	7	7	7	5	10	42.9%
Coral Reef Senior High School	Cape Coral	7	11	9	4	9	28.6%
Glades Central High School	Coral Springs	5	7	4	6	9	80.0%
Dr. Phillips High School	Orlando	15	6	10	15	8	-46.7%
First Coast High School	Jacksonville	20	9	9	13	8	-60.0%
Florida A&M University Developmental Research School	Tallahassee	0	3	1	5	8	166.7%
Leon High School	Tallahassee	12	7	6	6	8	-33.3%
Miramar High School	Miramar	43	20	19	10	8	-81.4%
Seminole High School	Lake Mary	2	5	10	4	8	300.0%
Dillard High School	Fort Lauderdale	19	21	9	12	7	-63.2%
Oakleaf High School	Orange Park	10	2	12	3	7	-30.0%
Robert Morgan Educational Center	Miami	10	11	2	2	7	-30.0%
Suncoast Community High School	Riviera Beach	9	15	10	5	7	-22.2%
Wekiva High School	Apopka	9	7	4	2	7	-22.2%
West Florida High School/Technical	Pensacola	0	0	0	0	7	0.0%
Armwood High School	Seffner	3	10	2	5	6	100.0%
Dr. Michael M. Krop Senior High	Miami	11	13	7	6	6	-45.5%
Fort Lauderdale High School	Fort Lauderdale	5	8	9	8	6	20.0%
Miami Norland Senior High School	Miami Gardens	21	28	14	6	6	-71.4%
<b>Fall 2021 Top 30 Total</b>		<b>383</b>	<b>333</b>	<b>258</b>	<b>224</b>	<b>280</b>	<b>-26.9%</b>

# First Time in College Enrollment by State of Residence

Figure 10: Fall 2021 FTIC Enrollment by State of Residence

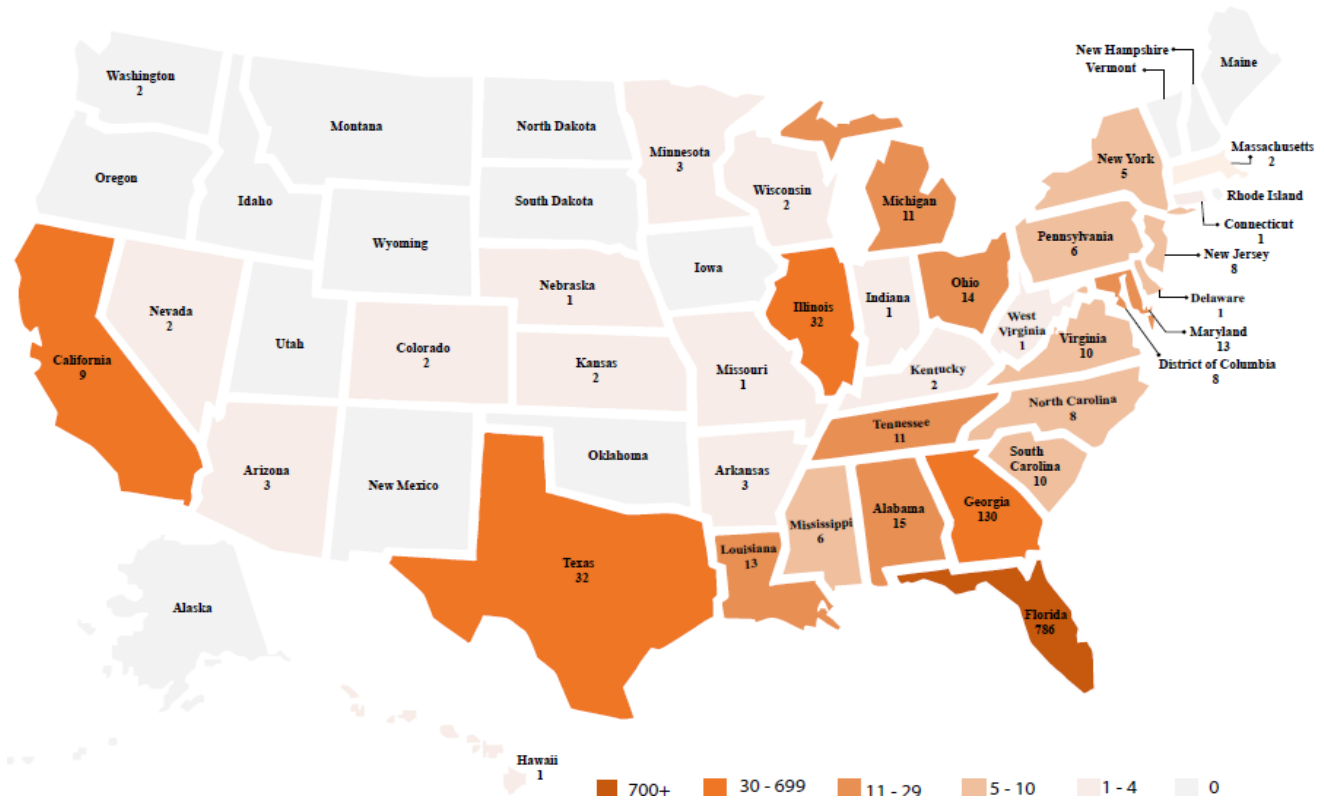


Table 21: FTIC Enrollment by State

State	Fall 2017	Fall 2018	Fall 2019	Fall 2020	Fall 2021	5-yr % Change
Alabama	11	13	9	3	15	36.4%
Alaska	0	0	0	1	0	-100.0%
Arizona	1	1	0	0	3	200.0%
Arkansas	0	0	2	1	3	50.0%
California	3	10	8	5	9	200.0%
Colorado	3	3	0	2	2	-33.3%
Connecticut	0	1	0	1	1	0.0%
Delaware	3	0	0	0	1	-66.7%
District of Columbia	10	15	6	4	8	-20.0%
Florida	1,377	1,156	1,024	772	786	-42.9%
Georgia	85	111	143	115	130	52.9%
Hawaii	0	0	0	1	1	0.0%
Idaho	0	0	0	0	0	0.0%
Illinois	25	18	27	22	32	28.0%
Indiana	4	4	2	5	1	-75.0%
Iowa	0	0	1	0	0	-100.0%
Kansas	0	0	1	0	2	100.0%
Kentucky	2	3	3	1	2	0.0%
Louisiana	4	5	7	1	13	225.0%
Maine	0	0	0	0	0	0.0%
Maryland	6	22	25	17	13	116.7%

State	Fall 2017	Fall 2018	Fall 2019	Fall 2020	Fall 2021	5-yr % Change
Massachusetts	0	3	3	2	2	-33.3%
Michigan	10	16	15	8	11	10.0%
Minnesota	3	1	1	2	3	0.0%
Mississippi	3	4	2	0	6	100.0%
Missouri	2	1	5	1	1	-50.0%
Montana	0	1	0	0	0	-100.0%
Nebraska	1	0	0	0	1	0.0%
Nevada	1	1	1	0	2	100.0%
New Hampshire	1	0	1	0	0	-100.0%
New Jersey	1	2	3	6	8	700.0%
New Mexico	0	0	0	0	0	0.0%
New York	6	7	7	9	5	-16.7%
North Carolina	5	11	9	18	8	60.0%
North Dakota	0	0	0	0	0	0.0%
Ohio	7	6	11	4	14	100.0%
Oklahoma	0	0	1	0	0	-100.0%
Oregon	1	0	0	0	0	-100.0%
Pennsylvania	3	5	3	4	6	100.0%
Rhode Island	1	0	0	0	0	-100.0%
South Carolina	4	6	6	2	10	150.0%
South Dakota	0	0	0	0	0	0.0%
Tennessee	4	8	4	6	11	175.0%
Texas	19	24	15	13	32	68.4%
Utah	0	0	0	0	0	0.0%
Vermont	0	0	0	0	0	0.0%
Virginia	7	4	9	4	10	42.9%
Washington	1	1	0	0	2	100.0%
West Virginia	0	0	0	0	1	0.0%
Wisconsin	1	0	1	1	2	100.0%
Wyoming	0	0	0	0	0	0.0%
Unknown	11	4	4	10	11	0.0%
<b>Total USA</b>	<b>1,626</b>	<b>1,467</b>	<b>1,359</b>	<b>1,041</b>	<b>1,168</b>	<b>-28.2%</b>
<b>Foreign Countries</b>	<b>11</b>	<b>1</b>	<b>3</b>	<b>0</b>	<b>2</b>	<b>-81.8%</b>
<b>Grand Total</b>	<b>1,637</b>	<b>1,468</b>	<b>1,362</b>	<b>1,041</b>	<b>1,170</b>	<b>-28.5%</b>

Table 22: FTIC Enrollment by Foreign Countries

State	Fall 2017	Fall 2018	Fall 2019	Fall 2020	Fall 2021	5-yr % Change
Argentine Republic	2	0	0	0	0	-100.0%
The Commonwealth Of The Bahamas	2	0	0	0	1	-50.0%
Republic Of Colombia	0	0	0	0	1	0.0%
Czech Republic	0	0	1	0	0	-100.0%
French Republic	0	0	1	0	0	-100.0%
Jamaica	0	0	1	0	0	-100.0%
Republic Of Kenya	5	0	0	0	0	-100.0%
Federal Republic Of Nigeria	0	1	0	0	0	-100.0%
Republic Of Turkey	2	0	0	0	0	-100.0%
<b>Total Foreign Countries</b>	<b>11</b>	<b>1</b>	<b>3</b>	<b>0</b>	<b>2</b>	<b>-81.8%</b>

# First Time in College Enrollment by Florida County of Residence

Figure 11: FTIC Fall 2021 Enrollment by Florida County of Residence

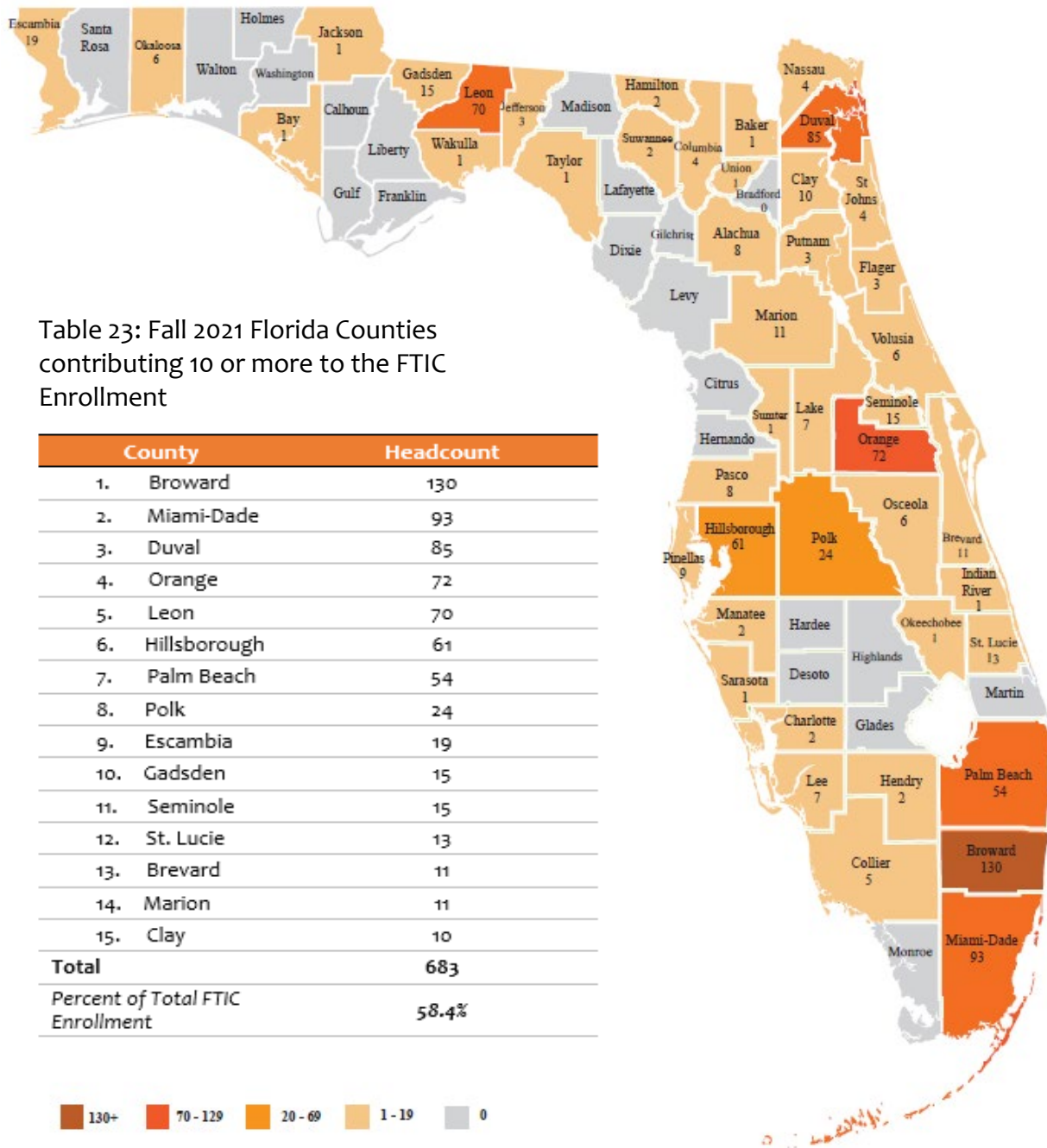


Table 23: Fall 2021 Florida Counties contributing 10 or more to the FTIC Enrollment

County	Headcount
1. Broward	130
2. Miami-Dade	93
3. Duval	85
4. Orange	72
5. Leon	70
6. Hillsborough	61
7. Palm Beach	54
8. Polk	24
9. Escambia	19
10. Gadsden	15
11. Seminole	15
12. St. Lucie	13
13. Brevard	11
14. Marion	11
15. Clay	10
<b>Total</b>	<b>683</b>
<i>Percent of Total FTIC Enrollment</i>	<b>58.4%</b>



Table 24: FTIC Enrollment by Florida County of Residence

Florida County	Fall 2017	Fall 2018	Fall 2019	Fall 2020	Fall 2021	5-yr % Change
Alachua	17	18	12	9	8	-52.9%
Baker	2	2	2	0	1	-50.0%
Bay	5	8	4	6	1	-80.0%
Bradford	0	4	3	0	0	-100.0%
Brevard	13	15	11	6	11	-15.4%
Broward	256	204	173	128	130	-49.2%
Calhoun	0	0	0	1	0	-100.0%
Charlotte	1	0	2	2	2	100.0%
Citrus	0	0	1	0	0	-100.0%
Clay	16	5	17	8	10	-37.5%
Collier	2	3	1	5	5	150.0%
Columbia	0	3	2	4	4	33.3%
Desoto	0	0	0	0	0	0.0%
Dixie	0	0	0	0	0	0.0%
Duval	161	100	108	97	85	-47.2%
Escambia	13	13	11	11	19	46.2%
Flagler	5	0	2	1	3	-40.0%
Franklin	1	1	1	0	0	-100.0%
Gadsden	25	20	13	13	15	-40.0%
Gilchrist	0	0	0	0	0	0.0%
Glades	1	0	0	0	0	-100.0%
Gulf	0	0	0	0	0	0.0%
Hamilton	1	2	0	1	2	100.0%
Hardee	0	1	0	1	0	-100.0%
Hendry	0	4	1	2	2	-50.0%
Hernando	3	1	2	0	0	-100.0%
Highlands	2	0	1	3	0	-100.0%
Hillsborough	79	96	86	77	61	-22.8%
Holmes	2	0	0	0	0	-100.0%
Indian River	1	1	3	1	1	0.0%
Jackson	0	0	3	2	1	-66.7%
Jefferson	5	4	2	4	3	-40.0%
Lafayette	0	0	0	0	0	0.0%
Lake	8	14	7	4	7	-12.5%
Lee	15	12	7	8	7	-53.3%
Leon	126	109	79	42	70	-44.4%
Levy	0	0	0	0	0	0.0%
Liberty	0	0	0	0	0	0.0%
Madison	1	1	1	2	0	-100.0%
Manatee	6	2	1	4	2	-66.7%
Marion	9	9	5	3	11	22.2%
Martin	0	2	1	0	0	-100.0%
Miami-Dade	218	223	167	71	93	-57.3%
Monroe	1	0	1	1	0	-100.0%
Nassau	4	3	2	1	4	0.0%
Okaloosa	3	4	4	7	6	100.0%
Okeechobee	0	0	1	1	1	0.0%
Orange	110	74	97	91	72	-34.5%
Osceola	8	4	8	7	6	-25.0%
Palm Beach	106	80	72	55	54	-49.1%
Pasco	15	9	16	7	8	-46.7%
Pinellas	23	25	28	14	9	-60.9%

Florida County	Fall 2017	Fall 2018	Fall 2019	Fall 2020	Fall 2021	5-yr % Change
Polk	43	17	21	24	24	-44.2%
Putnam	1	7	1	1	3	200.0%
Santa Rosa	4	2	1	3	0	-100.0%
Sarasota	7	2	3	2	1	-85.7%
Seminole	18	15	15	9	15	-16.7%
St. Johns	3	7	5	5	4	33.3%
St. Lucie	10	10	10	5	13	30.0%
Sumter	4	0	0	0	1	-75.0%
Suwannee	1	2	3	0	2	100.0%
Taylor	3	5	1	2	1	-66.7%
Union	1	0	0	0	1	0.0%
Volusia	7	7	5	14	6	-14.3%
Wakulla	7	5	0	4	1	-85.7%
Walton	0	0	1	2	0	-100.0%
Washington	4	1	0	1	0	-100.0%
<b>Total Florida Counties</b>	<b>1,377</b>	<b>1,156</b>	<b>1,024</b>	<b>772</b>	<b>786</b>	<b>-42.9%</b>
<b>Out-of-State</b>	<b>249</b>	<b>311</b>	<b>335</b>	<b>269</b>	<b>382</b>	<b>53.4%</b>
<b>Total USA</b>	<b>1,626</b>	<b>1,467</b>	<b>1,359</b>	<b>1,041</b>	<b>1,168</b>	<b>-28.2%</b>
<b>Foreign Countries</b>	<b>11</b>	<b>1</b>	<b>3</b>	<b>0</b>	<b>2</b>	<b>-81.8%</b>
<b>Grand Total</b>	<b>1,637</b>	<b>1,468</b>	<b>1,362</b>	<b>1,041</b>	<b>1,170</b>	<b>-28.5%</b>

Source: Student Instruction File (SIF) from 1995 to 2021