

A photograph of a brick wall at Florida A&M University. The wall features a large circular seal in an arched niche. The seal contains the text 'FLORIDA AGRICULTURAL MECHANICAL UNIVERSITY' and 'HEAD HAND FIELD' around a central shield. Below the seal, the letters 'M' and 'Y' are visible on the brickwork. The image is overlaid with a green diagonal graphic on the left and an orange diagonal graphic on the right.

Enterprise Risk Management  
Advisory Committee Meeting  
June 6, 2022

# Agenda

01

**Welcome/Opening Remarks**

02

**June Board of Trustees Meeting:  
Risk Appetite Statement, ERM Policy Update,  
Work Plan**

03

**HBCU Risk Management Conference**

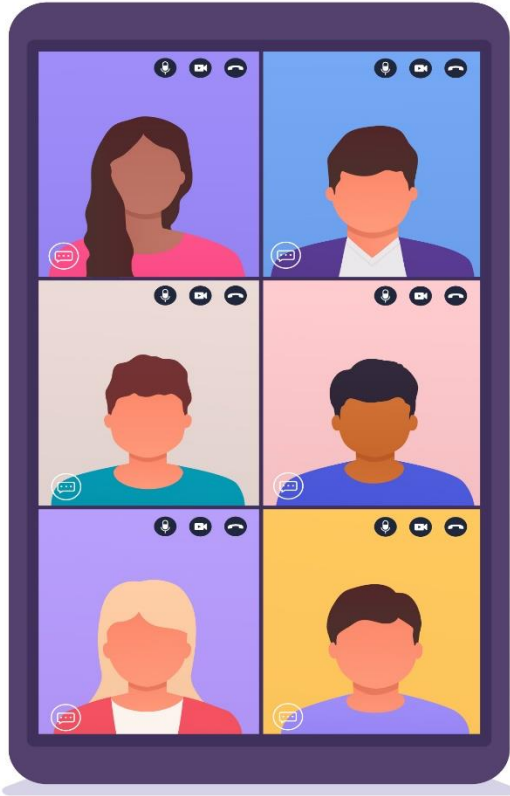
04

**Risk Identification Process**

05

**Open Discussion**





# Opening Remarks

# Risk Appetite Statement



The Risk Appetite Statement sets out the most significant types of risks to Strategic and Performance goals that the University is exposed to and outlines the level of risk the University is willing to accept for each risk category.



# Internal Controls & ERM Policy Updates



- ERM function was moved from SPAIE to DoA
- Risk Appetite Statement annual review by BOT
- Various changes to the internal controls sections



# ERM Work Plan



- ERM Education Program
- University Risk Profile
- ERM University Maturity Assessment
- Develop Risk Response and Follow-Up Process
- ERM Webpage Development
- ERMAC Activities



JUNE 2-4, 2022  
HOUSTON, TEXAS



# Performance-Based Funding Risk Identification Groups



**Metrics 1 & 2**



**Metrics 3 & 7**



**Metrics 4, 5, & 9b**



**Metrics 6 & 8**



**Metrics 9a & 10**







Questions



Answers

**“At FAMU, Great Things Are  
Happening Every Day.”**

**ESTABLISHED 1887**

