

Title: VPN Client Instructions
Intended Audience: FAMU VPN Users/Tech Staff
Summary: How to install the VPN Client
Publication date: 09/04/2015
Author: Michael Simmons / ITS Networking Support Services
Contact Info: michael.simmons@fam.u.edu

Information Technology Services

VPN Client Instructions

A virtual private network (VPN) extends a private network across a public network, such as the Internet that allows a secure connection into the university's network.

How the VPN Client Works

The Cisco VPN Client creates a secure connection, called a tunnel, between your computer and the private network. It uses the Internet Key Exchange (IKE) and Internet Protocol Security (IPSec) tunneling protocols to make and manage secure connections.

Connecting with Cisco AnyConnect Secure Mobility Client for Windows

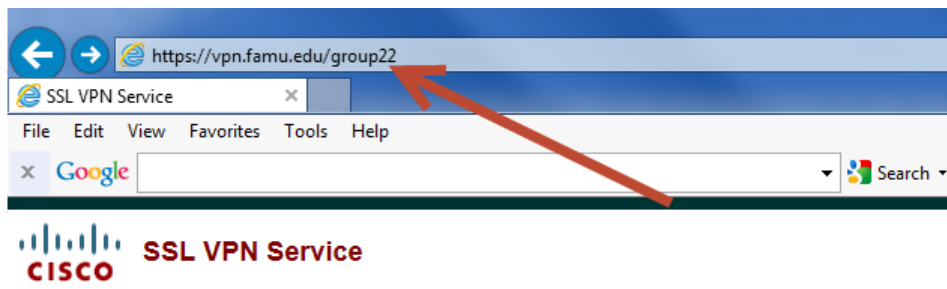
When off campus, use the Cisco AnyConnect Secure Mobility Client, a WebVPN component, to establish a remote connection with your office computer, or access restricted resources.

Before You Begin

Before you can use it, you must download the Cisco AnyConnect Secure Mobility Client for Windows and install it. To learn how to connect with the Cisco VPN client, refer to the instructions below.

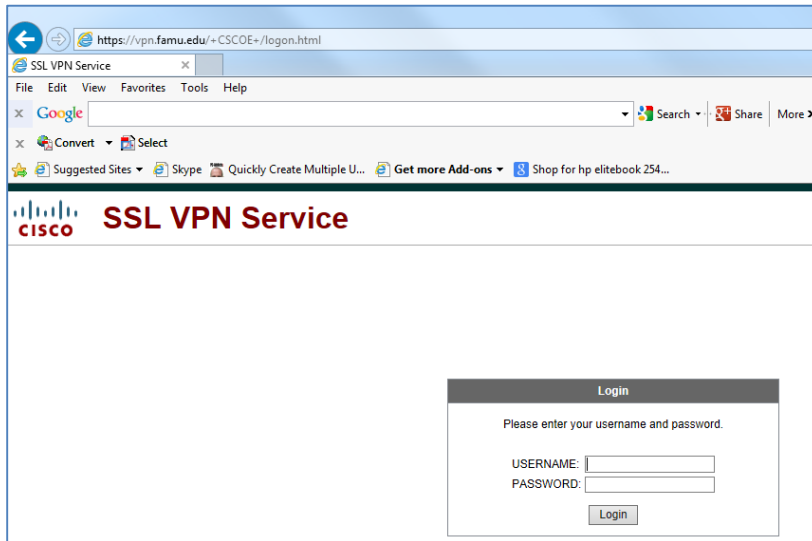
Step 1. To establish a VPN connection go to a web browser and type **vpn.famu.edu/group**

<press enter >

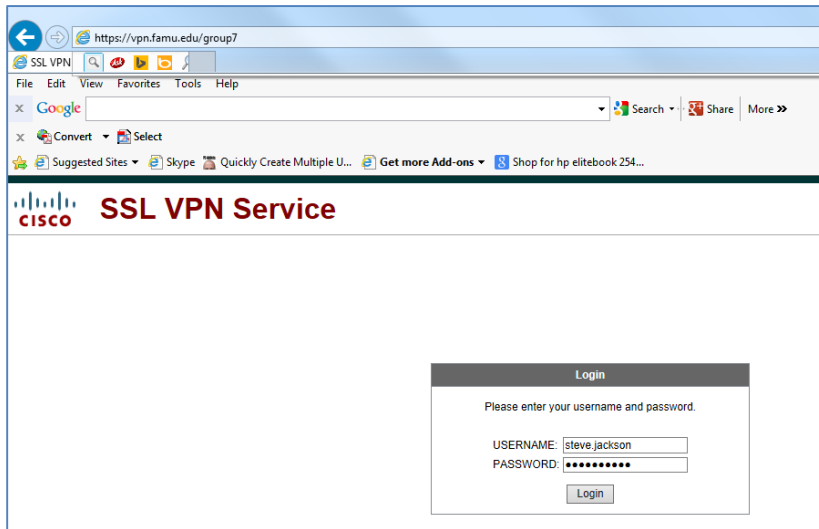


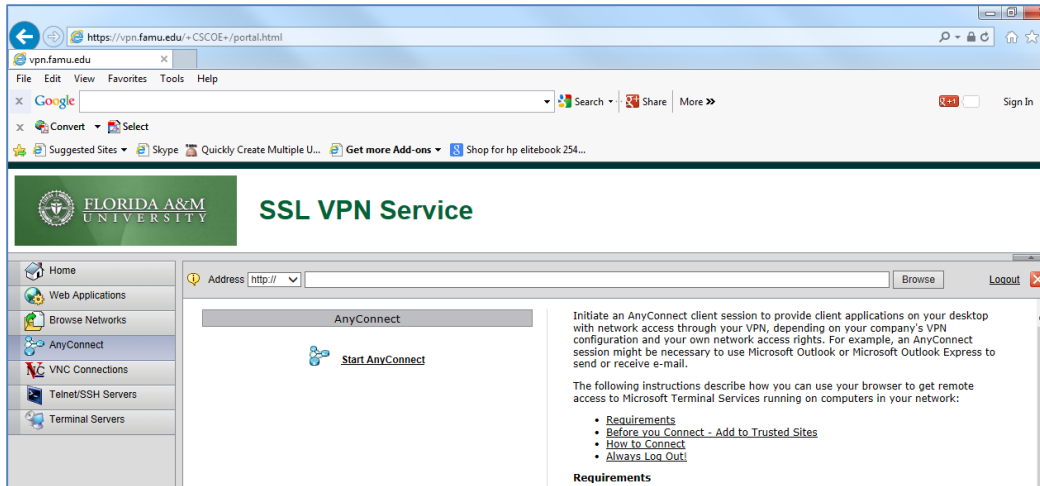
Your group assignment will be provided by the network administrator. (example: vpn.famu.edu/**group22**).

Step 2. Next you will be presented to the login box.

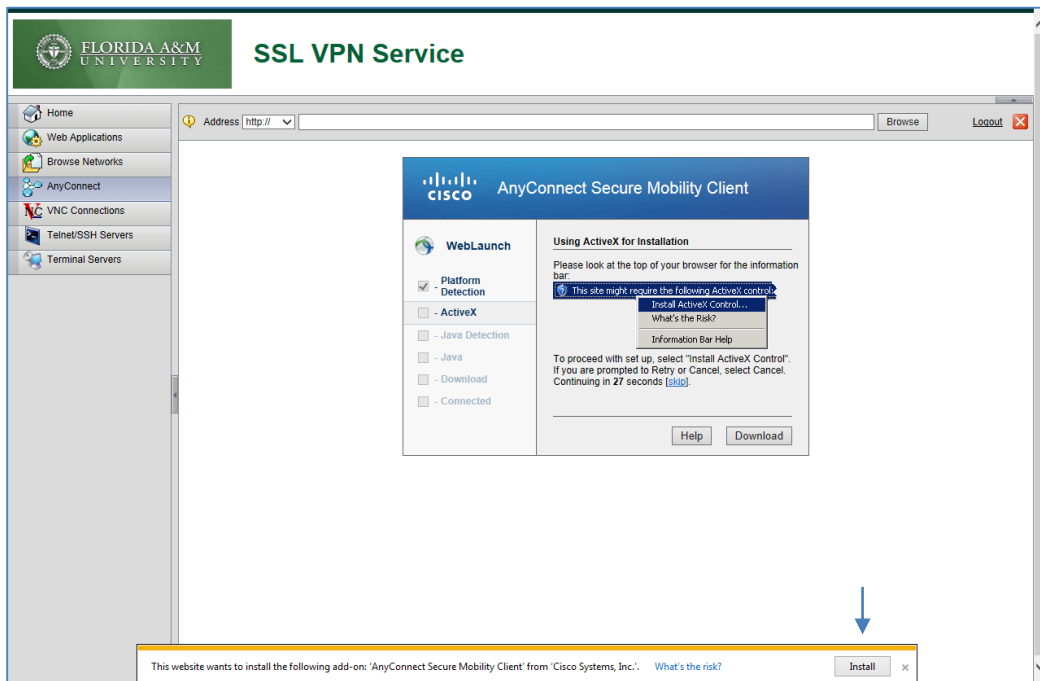


Step 3. Enter your iRattler user id and password <press enter>.





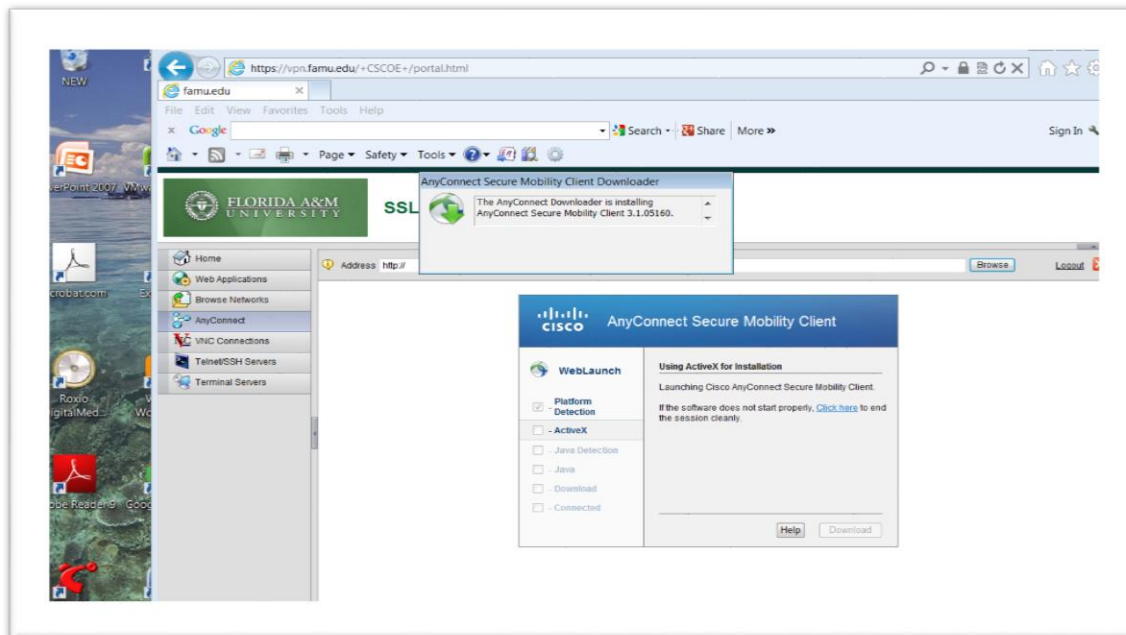
Step 4. Click → **Start AnyConnect**



Step 5: Click → **install button** near bottom of screen, to install “AnyConnect Secure Mobility Client”



Step 6. Select → run option



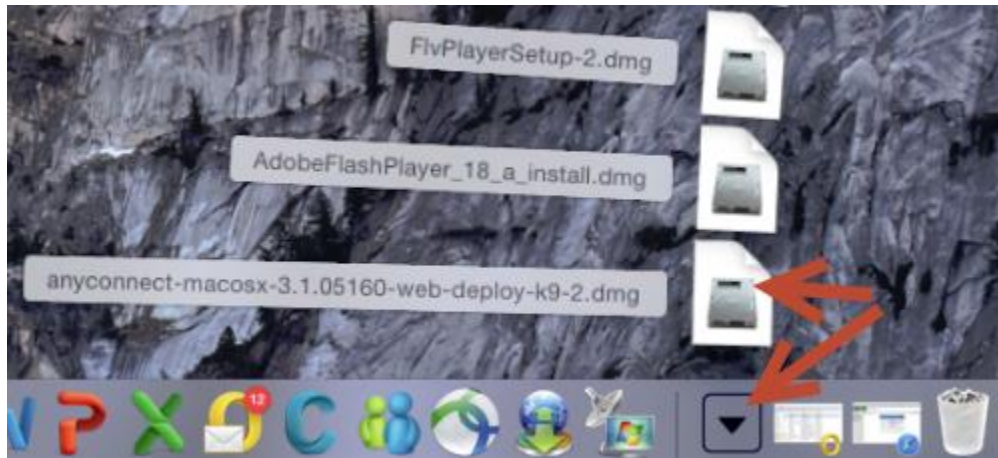
Congratulation!!!! your VPN connection is now established. You can now perform remote desktop into your office computer or access restricted resources.

Connecting with Cisco AnyConnect Secure Mobility Client for MAC ←

Step 1. Download the VPN installer → Click Mac OS x 10.6+



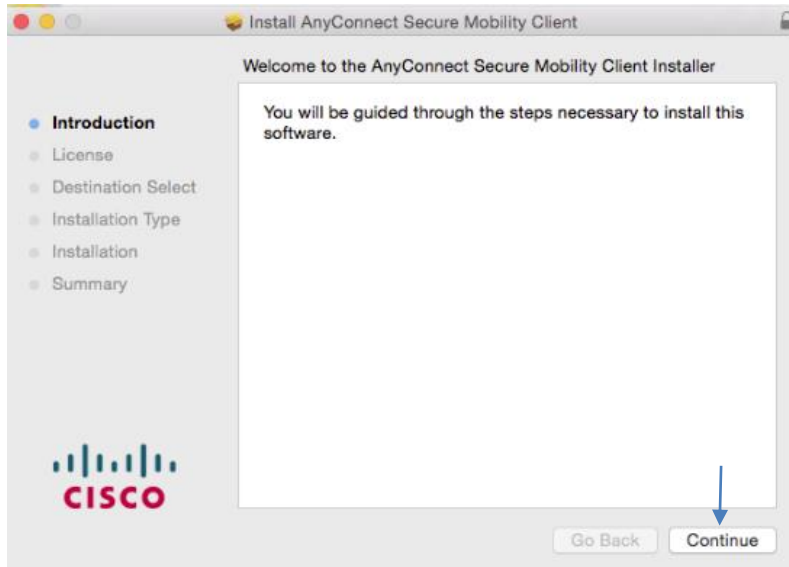
Step 2. Click download button on taskbar and select anyconnect-macosx-3.1.0.5160-web-deploy-k9-2.dmg



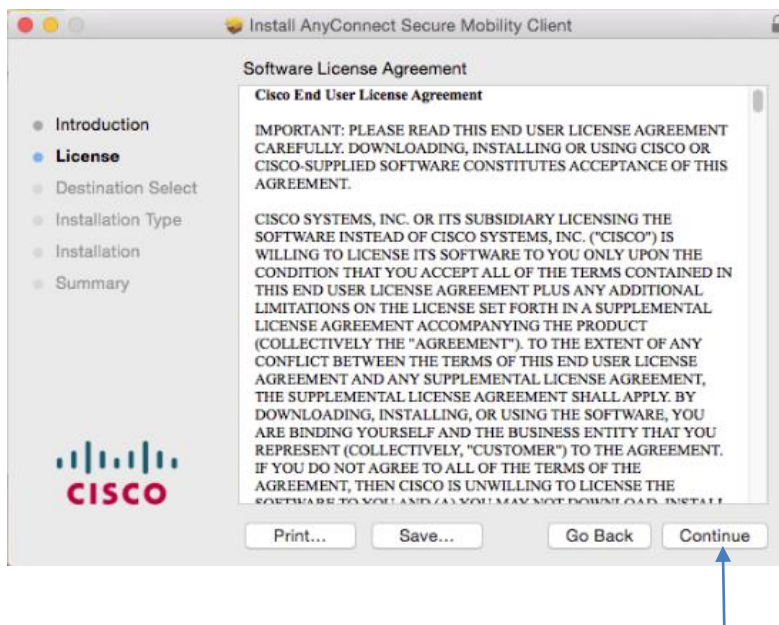
Step 3. The file will mount a disk image. Open this disk image and launch the “vpn.pkg”.



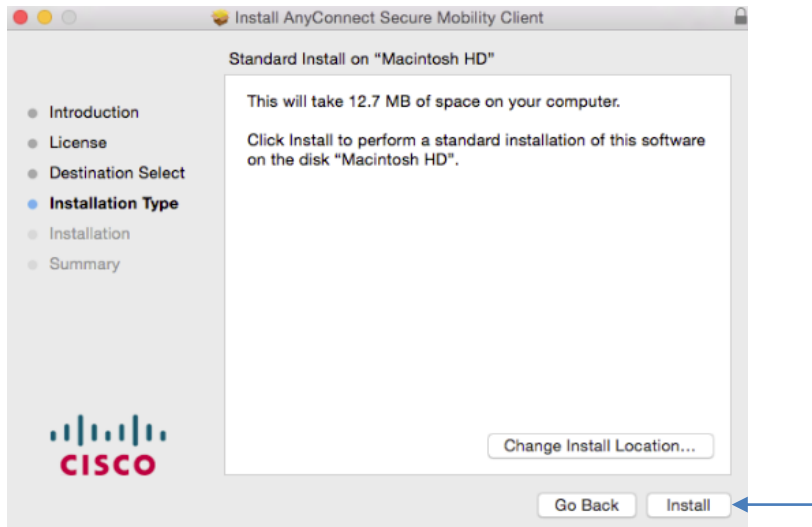
Step 4. On the following screen titled Welcome to the AnyConnect Secure Mobility Client Installer, click Continue.



Step 5. When presented with the software license agreement, click **Continue** then click **Agree** on the slide-down menu.

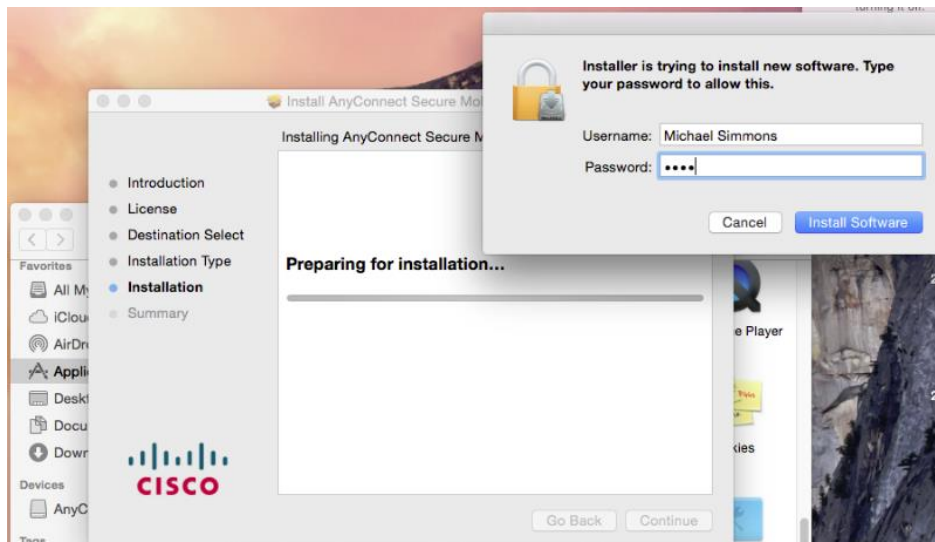


Step 6. If you are prompted "Select a Destination..." select your primary hard drive and click **Continue**.

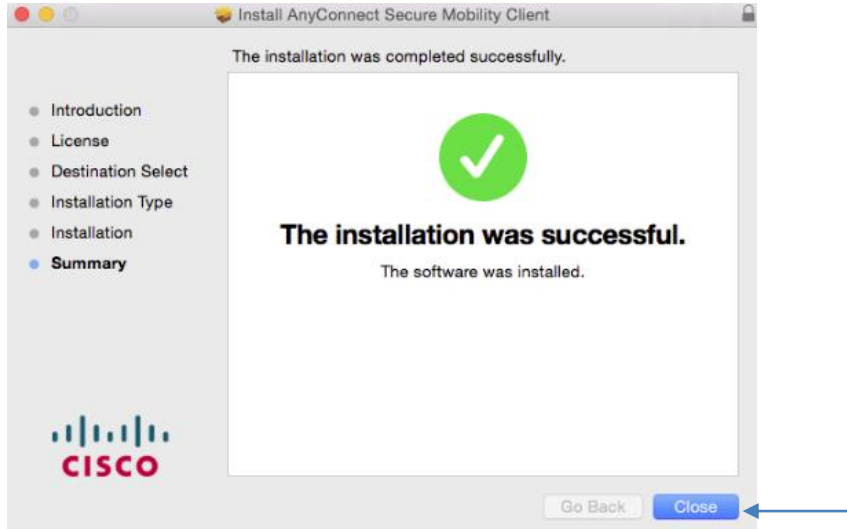


Step 7. On the window titled *Standard Install...*, click the button labeled **Install** and enter your computer username and password when prompted and click **Install Software**.

Note: the user must be an administrator of the machine to install.



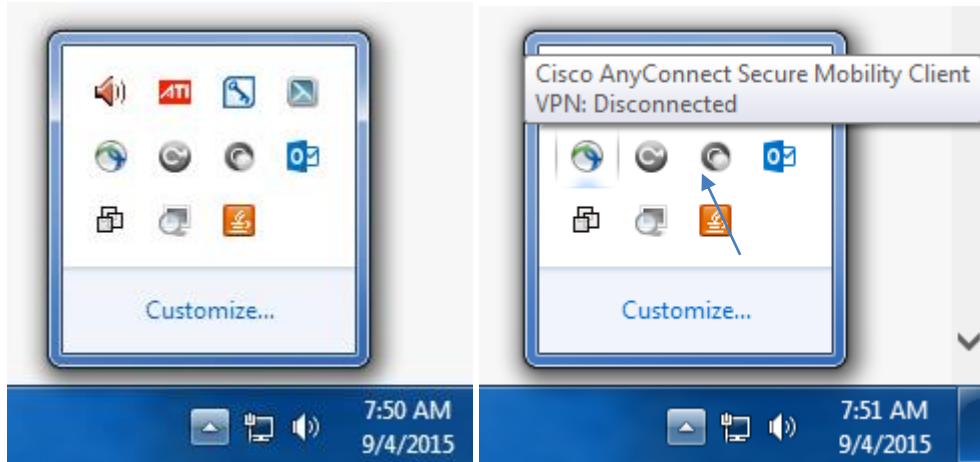
Step 8. When the installation has completed, click the button labeled **Close**.



Connecting and Disconnecting with Cisco VPN Client

To connect with the Cisco VPN client, do the following:

Step 1. Click the **Cisco AnyConnect Secure Mobility Client Icon** to establish a VPN connection for your computer.

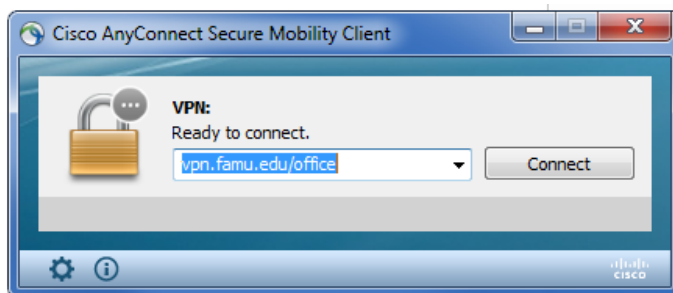


↑
Windows

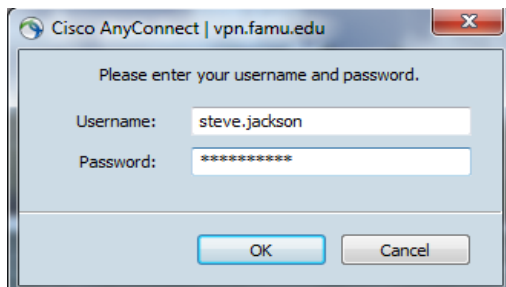


↑
Mac

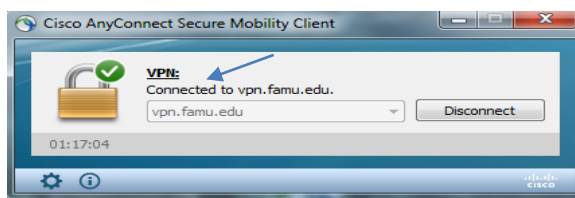
Step 2. Ensure you're connect the internet by browsing the Web. Click on connect.



Step 3. When prompted enter your irrattler **user id** and **password** <press enter>.



Congratulation!!!! Your VPN connection is now established. You can now perform remote desktop into your office computer or access restricted resources

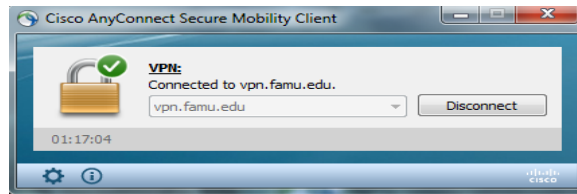
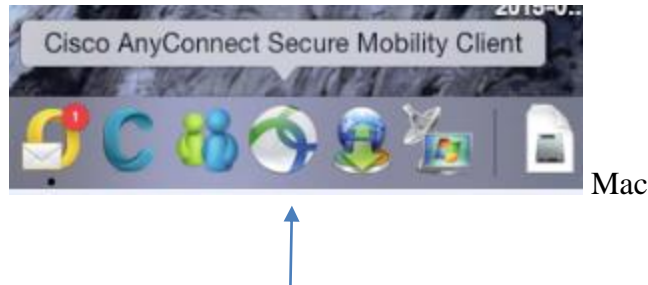


Windows



Disconnecting with Cisco VPN Client

To **Disconnect Cisco VPN client**, click on Cisco VPN client's padlock icon in your system tray (in the lower-right corner of your screen, next to your clock) and **select -> Disconnect**



Timeout

The VPN server will disconnect you due to being idle (i.e. it has a limited timeout). If you are no longer using your VPN connection, you should disconnect. Reconnect when you need to access restricted resources from off campus again.

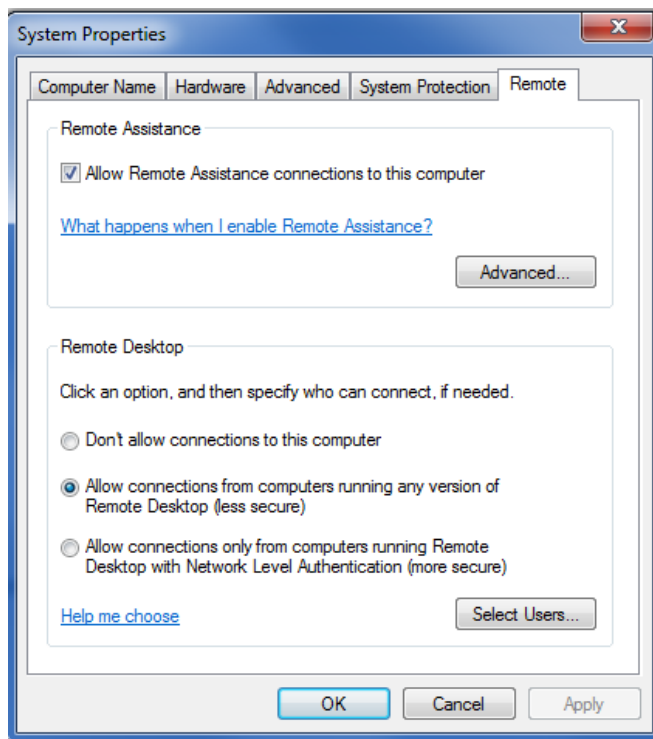
REMOTE DESKTOP

Now that your vpn connection have been established, you must perform a remote desktop into your office computer, electronic data or application services.

To configure your computer for remote access for windows computer, follow these steps:

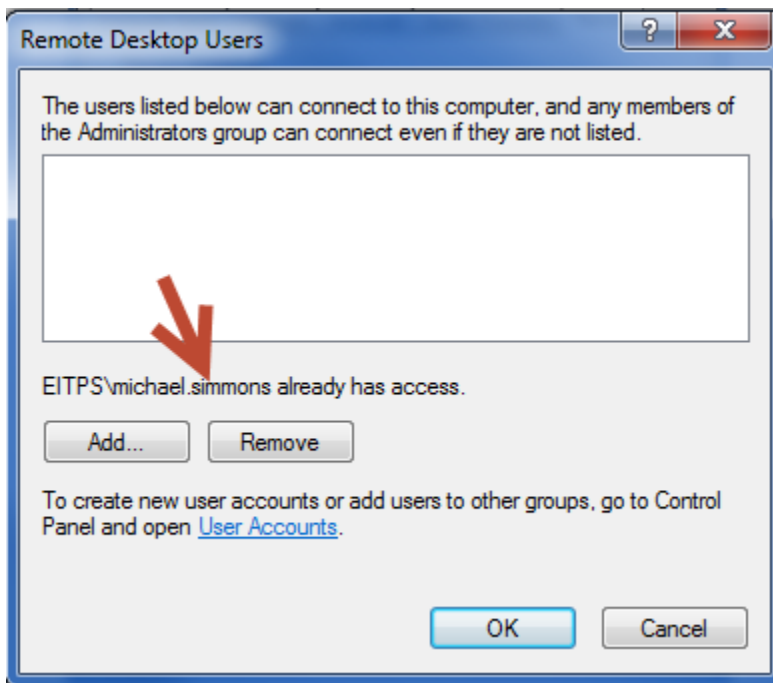
Step 1. In Control Panel, click System and Security, and then click System.

Step 2. On the System page, click Remote Settings in the left pane. This opens the System Properties dialog box to the Remote tab.



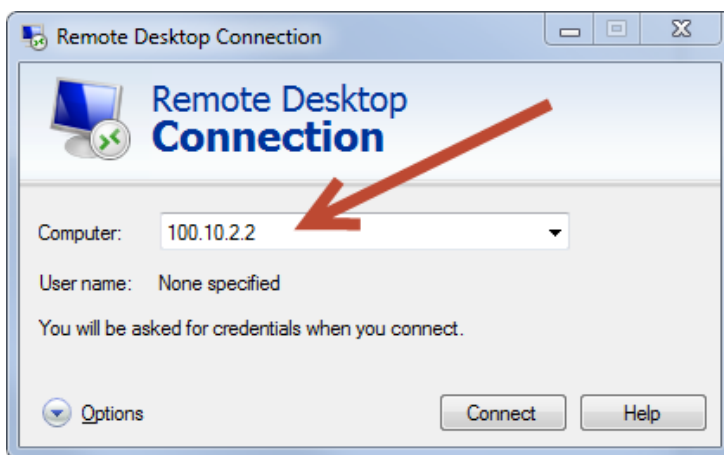
Step 3. To enable Remote Desktop: Select **Allow Connections From Computers Running Any Version Of Remote Desktop** to allow connections from any version of Windows.

Step 4. Click Select Users. This displays the Remote Desktop Users dialog box.



Step 5. To grant Remote Desktop access to a user, click Add if your user account is not already displayed. This opens the Select Users dialog box. Type your user account, and then click Check Names. If matches are found, select the account you want to use and then click OK. If no matches are found, update the name you entered and try searching again. Repeat this step as necessary, and then click OK.

Step 6. On Campus Remote Desktop requires you to enter your computer IP address (100.10.x. x) into box



Step 7. Off Campus Remote Desktop requires you to enter both your work computer domain or group followed by the computer IP address (OPS\ 100.10.x. x) into box



Step 8. Your computer logon page will be display.

Step 9. Just enter your username and password of office computer to logon.

***Congratulation!!!!** You can now access your office computer or other restricted resources.*

