



Facilities Planning Committee Meeting

PRESENTED BY

Kendall Jones - Interim AVP, Construction and Facilities Management

Wednesday, December 3, 2014

Florida Agricultural and Mechanical University



Action Items

Approval of Minutes
September 10, 2014





Action Items

Adoption of Campus Development Agreement with the City of Tallahassee

Recommendation:

- Recommends the adoption of the Campus Development Agreement by the Board of Trustees.
- Facilities Planning and Construction in accordance with 1013.30 F.S., seek final approval of the Campus Development Agreement with City of Tallahassee.





Information Items

Project Updates





Information Items

FAMU Village (800 Bed Dormitory)

- Project completed
- Processing final pay applications
- Closing out project account





Information Items

FAMU Village (800 Bed Dormitory)





Information Item

Pharmacy Building Phase II

- Foundation and vertical work has commenced
- Update Guaranteed Maximum Price (GMP)
- Value Engineering to get building within GMP (additional \$10 million)
- Final Amended GMP will be submitted to BOT for approval
- Updated Project Schedule (Spring 2016)





Information Items

Pharmacy Building Phase II





Information Items

FAMU-FSU College of Engineering Phase III

- Scope of work has been defined (renovation)
- Architect's contract has been Amended (\$10 million)
- Establish project schedule





Information Items

FAMU-FSU College of Engineering Phase III





Information Items

SGA Grand Ballroom & Student Union

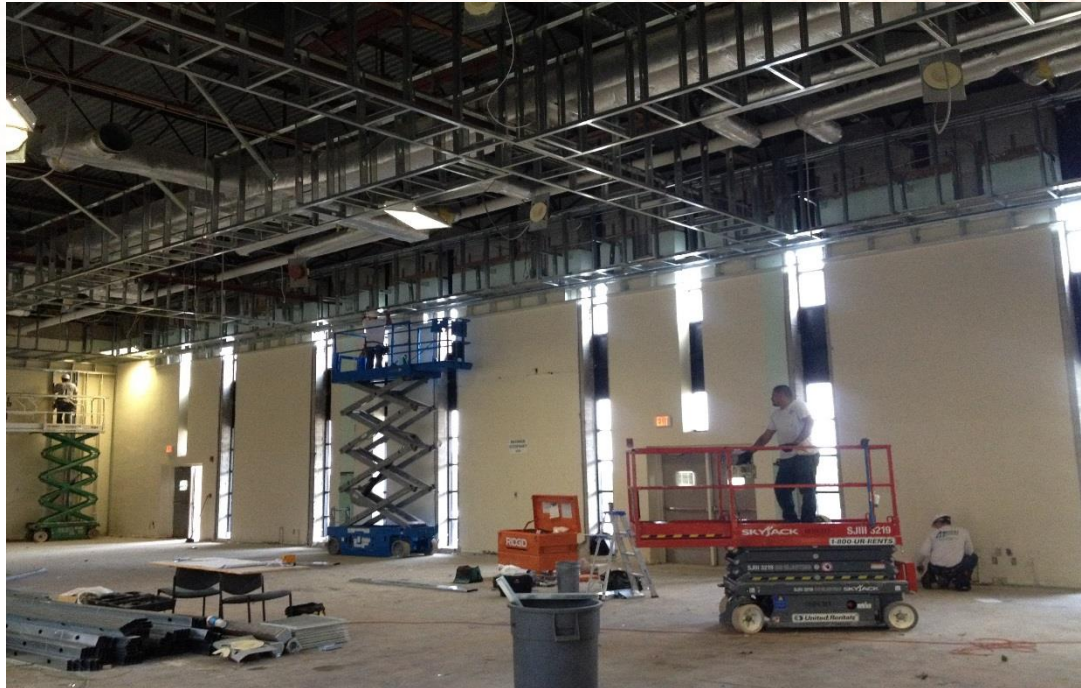
- Ballroom Interior scope started (October 2014)
- Ballroom substantial completion (March 2015)
- Student Union currently in design stage (90%)
- Student Union construction starts (late Spring 2015)





Information Items

SGA Grand Ballroom & Student Union





Information Items

Master Plan Update

- Consistent with the President's initiatives
- Key Elements - Land acquisition, pedestrian walkways, landscape and beautification, security, and future building elements
- Collaboration with University constituents - faculty, staff, administration, and community members
- Educational Plant Survey





Information Items

Recreational Center Chiller Replacement Project

- Failure of HVAC Chiller
- SGA and President agree
- Utilize CITF appropriation for this capital renewal project
- Chiller replacement \$150,000





QUESTIONS





“At FAMU, Great Things Are Happening Every Day.”

established 1887

