



Academic Affairs Committee Meeting

PRESENTED BY

Rodner B. Wright

December 3, 2014

Florida Agricultural and Mechanical University



MOMENT OF RECOGNITION

FAMU/FAU - MEDICAL SCHOLARS PROGRAM



Title III Sponsored-Activity

FAU
CHARLES E. SCHMIDT
COLLEGE OF MEDICINE
Florida Atlantic University





The FAMU and FAU Collaboration Group



Kerita Carball
Medical Scholars Program



J.C.



Michael L. Smith, MD
Medical Scholars Program



Alyssa C. Onaloga
Medical Scholars Program



Ellen S. Peterson
Medical Scholars Program



Alexandra C. Thomas
Medical Scholars Program



Carl M. Smith
Medical Scholars Program



Kevin J. Fisher
Medical Scholars Program

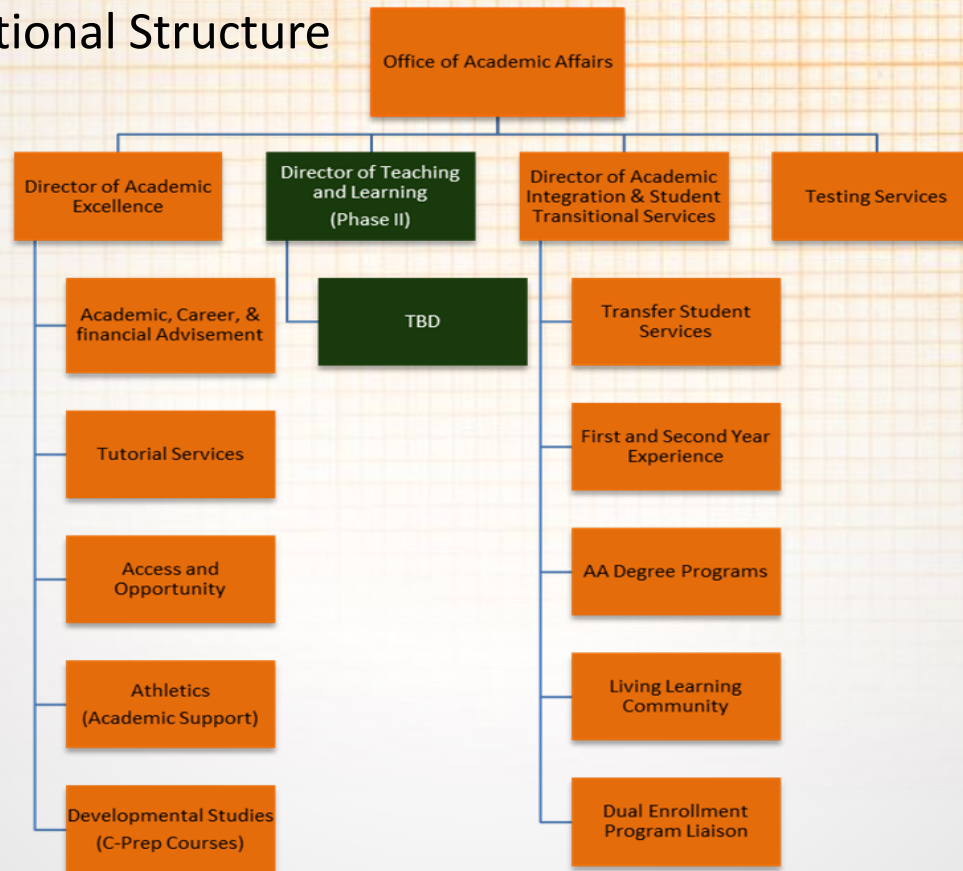


Malik J. Khan
Medical Scholars Program



UNDERGRADUATE STUDENT SUCCESS CENTER

Organizational Structure





CENTER PRIORITIES

Short Term:

- Align Success Center services with President's Performance Plan and 2020 Strategic Plan
- Overhaul of website
- Electronic student tracking system
- Baseline inventory for performance metrics & annual reporting
- Streamline and enhance tutorial services





Short Term continued:

- Enhancement and establishment of full fiscal support for Access Summer Bridge program
- Development and implementation of:
 - Transfer student transition plan
 - University Living Learning Communities
 - Second Year Experience program





CENTER PRIORITIES CONTINUED:

Long Term:

- Restructure advisement services
- Full implementation of early alert system





ACCESS AND OPPORTUNITY

- Established in Fall of 2014
 - Redesign of the former Freshman Studies Program
- Created to provide an enhanced comprehensive academic and social support services to the University's profile admits and undecided students.





FAMU DRS Update

SCHOOL GRADE

- 2006 – C
- 2007 – F
- 2008 – C
- 2009 – D
- 2010 – C
- 2011 – C
- 2012 – D
- 2013 – C





Student Achievement Data

	SY 2012	SY2013	SY2014
% Students Passing Reading	41	46	54
% Students Passing Math	32	37	46
% Students Passing Science	25	29	36
% Students Passing Writing	82	39	52





Student Achievement Data 2014

SY 2013- 2014	Reading	Math
Kindergarten	62%	58%
1 st Grade	61%	71%
2 nd Grade	56%	64%





Student Achievement Data

- Graduation Rate SY 2014:
 - 4 Year – 99%
 - 5 Year – 95%





Student Achievement Data

- SY 2011- 2012 – 524
- SY 2012- 2013 – 483
- SY 2013- 2014 – 469
- Current Enrollment – 504





Improvement Plan

- Teacher and Administrator Evaluations and Incentives
- Increase Professional Development Opportunities
- Increase Student Opportunities for More Rigorous Curriculum
- Incorporate one-to-one technology program





FLS Enrollment

- FAMU DRS 504
- FAU 940
- PK YONGE 1,144
- FSUS 1,600





School Structure

- **Administrative Staff – FAMU 4 Administrators**
 - PK Yonge – 9 Administrative Faculty
 - FSUS – 9 Administrative Faculty
 - A.D. Henderson – 6 Administrative Faculty
- **ESE Staff- FAMU 2 ESE Specialist**
 - PK Yonge – Speech Pathologist; 4 ESE Faculty
 - FSUS – Speech Pathologist; 6 ESE Faculty
 - A.D. Henderson - Speech Pathologist; 3 ESE Faculty





School Structure

- Guidance – 1 1/2 guidance support
 - PK Yonge – 4 Guidance; 1 Testing Coordinator
 - FSUS – 3 Guidance; 1 Testing Coordinator
 - A.D. Henderson – 4 Guidance Support Personnel
- Technology Support – 1 Technology support person
 - PK Yonge – 3 Technical Staff
 - FSUS – 4 Technical Staff
 - A.D. Henderson – 3 Technical Staff





Positions Identified as Needed

- 1 Full-Time Speech Pathologist
- 1 Full-Time Academic Advisor
- 1 Full-Time Testing Coordinator
- 1 Full-Time Technology Coordinator
- 1 Full-Time MTSS (ESE) Coordinator
- 1 Full-Time Public Relations and Recruitment Coordinator
- 1 Full –Time District Programs Coordinator





“At FAMU, Great Things Are Happening Every Day.”

“It’s A New Season”

established 1887

